

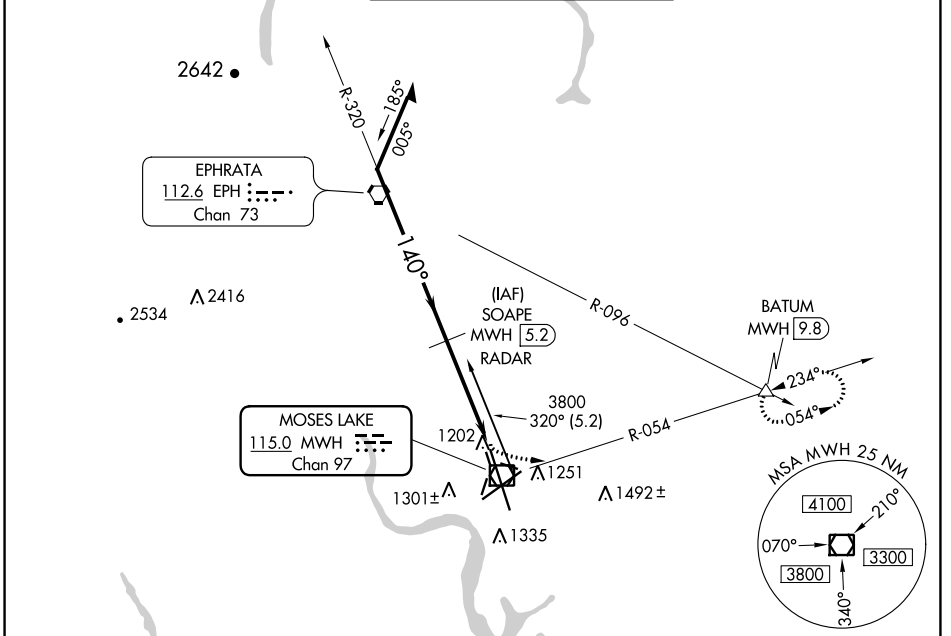
VOR/DME MWH <b>115.0</b> Chan <b>97</b>	APP CRS <b>140°</b>	Rwy ldg <b>13503</b> TDZE <b>1169</b> Apt Elev <b>1189</b>
---	------------------------	--

# VOR-3 RWY 14L

GRANT COUNTY INTL (MWH)

**⚠** MISSED APPROACH: Climbing left turn to 4000 via MWH R-054 to BATUM INT/MWH 9.8 DME and hold.

ATIS <b>119.05</b>	GRANT COUNTY APP CON * <b>126.4 379.95</b>	GRANT COUNTY TOWER * <b>118.25 (CTAF) 257.8 (EAST)</b> <b>128.0 257.8 (WEST)</b>	GND CON <b>121.9</b>	UNICOM <b>122.95</b>
-----------------------	---	--	-------------------------	-------------------------



NW-1, 11 JUL 2024 to 08 AUG 2024

NW-1, 11 JUL 2024 to 08 AUG 2024

## RADAR or DME REQUIRED

