

WAAS CH 70410 W22A	APP CRS 216°	Rwy Idg TDZE 1166 Apt Elev 1189	10000
--	------------------------	---	--------------

RNAV (GPS) Y RWY 22

GRANT COUNTY INTL (MWH)

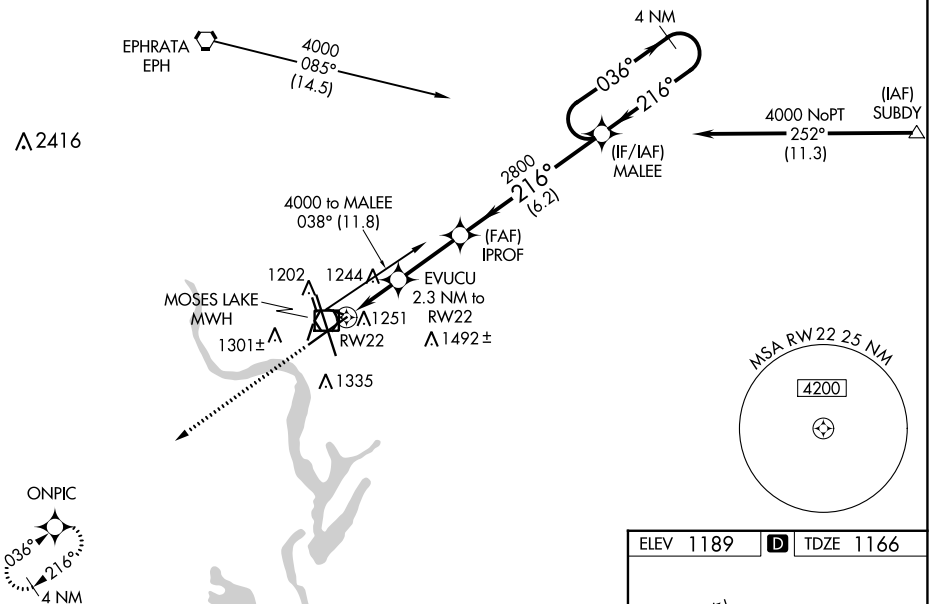
RNP APCH.

▼ For uncompensated Baro-VNAV systems, LNAV/VNAV NA below -17°C or above 36°C. Baro-VNAV and VDP NA when using Ephrata altimeter setting. When local altimeter setting not received, use Ephrata altimeter setting; increase all DA 36 feet and all MDA 40 feet, increase LNAV/VNAV all Cats visibility and LNAV Cats C and D visibility 1/8 SM and Circling Cat D visibility 1/4 SM.

MISSED APPROACH:
Climb to 4000 direct ONPIC and hold.

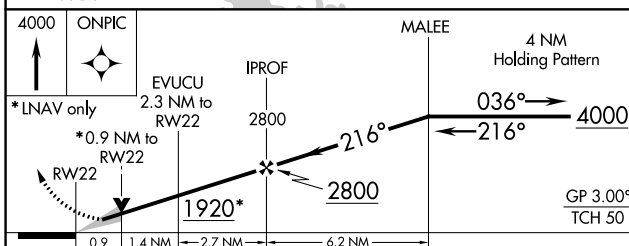
ATIS 119.05	GRANT COUNTY APP CON * 126.4 379.95	GRANT COUNTY TOWER * 118.25 (CTAF) 0 257.8 (EAST) 128.0 257.8 (WEST)	GND CON 121.9	UNICOM 122.95
-----------------------	---	--	-------------------------	-------------------------

Procedure NA for arrivals at EPH VORTAC on airway radials 060 CW 135.



NW-1, 08 AUG 2024 to 05 SEP 2024

NW-1, 08 AUG 2024 to 05 SEP 2024



CATEGORY	A	B	C	D
LPV DA		1366-3/4	200 (200-3/4)	
LNAV/VNAV DA		1429-7/8	263 (300-7/8)	
LNAV MDA		1500-1	334 (400-1)	
CIRCLING	1660-1	471 (500-1)	1680-1 1/2 491 (500-1 1/2)	1820-2 631 (700-2)

ELEV 1189 TDZE 1166

TWR 1299. REIL Rwy 4. REIL Rws 14L and 22. HIRL Rwy 14L-32R. MRL Rws 4-22 and 18-36.