

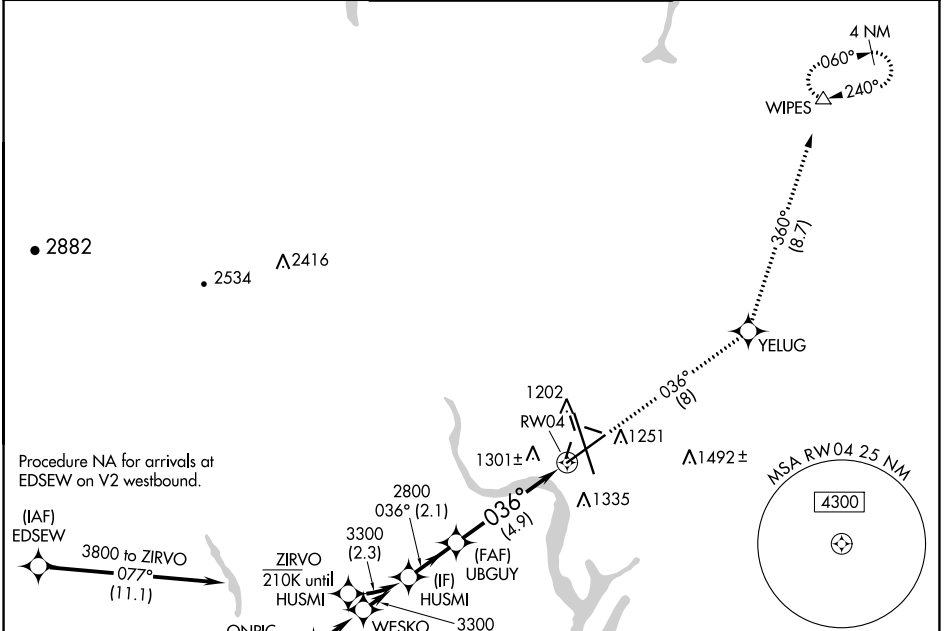
APP CRS	Rwy Idg	10000
036°	TDZE	1189
	Apt Elev	1189

RNAV (RNP) Z RWY 4

GRANT COUNTY INTL (MWH)

RNP AR APCH-GPS.		MISSED APPROACH: Climb to 4000 on track 036° to YELUG and track 360° to WIPES and hold.	

ATIS 119.05	GRANT COUNTY APP CON * 126.4 379.95	GRANT COUNTY TOWER * 118.25 (CTAF) 0 257.8 (EAST) 128.0 257.8 (WEST)	GND CON 121.9	UNICOM 122.95
-----------------------	---	--	-------------------------	-------------------------



Procedure NA for arrivals at EDSEW on V2 westbound.

(IAF) EDSEW 3800 to ZIRVO 077° (11.1)

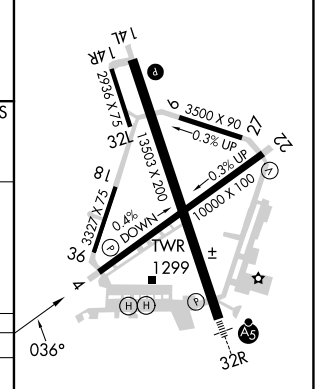
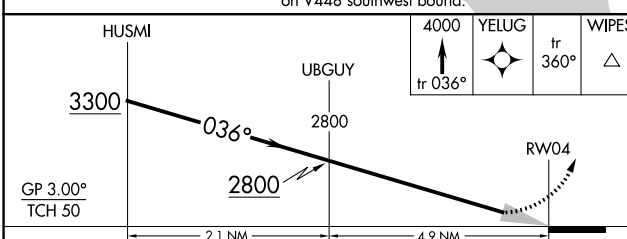
ZIRVO 210K until HUSMI

ONPIC (RNP 0.30) 4300 027° (4.8)

(IAF) RUBEL 3800 036° (2.2)

Procedure NA for arrivals at RUBEL on V448 southwest bound.

ELEV 1189	D TDZE 1189
-----------	--------------------



CATEGORY	A	B	C	D
RNP 0.10 DA	1549-1 360 (400-1)			
RNP 0.30 DA	1644-1 3/8 455 (500-1 3/8)			

AUTHORIZATION REQUIRED

REIL Rwy 4 **1**

REIL Rws 14L and 22

HIRL Rwy 14L-32R

MIRL Rws 4-22 and 18-36

NW-1, 11 JUL 2024 to 08 AUG 2024

NW-1, 11 JUL 2024 to 08 AUG 2024