

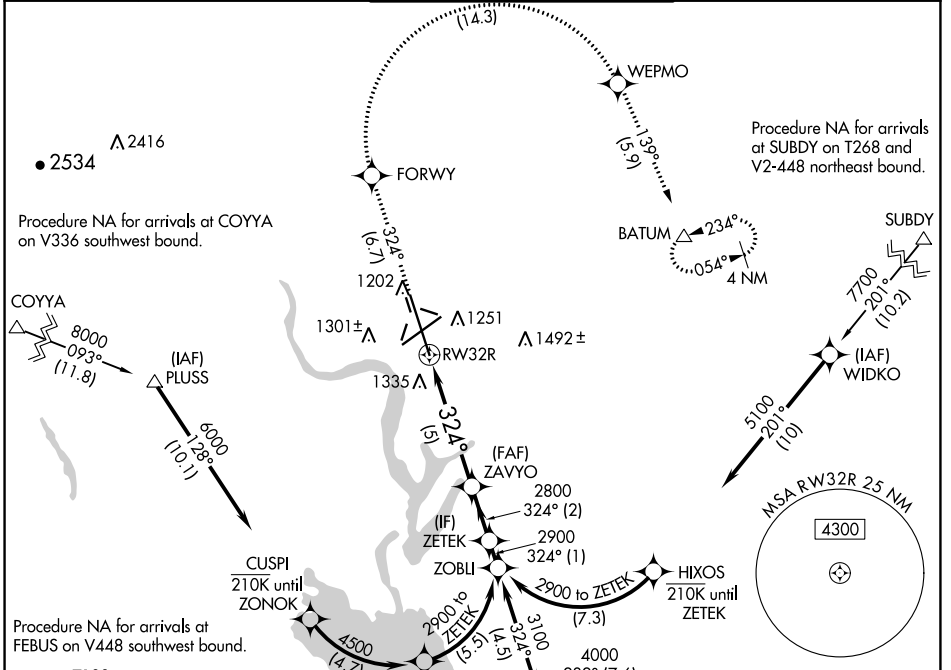
APP CRS	Rwy ldg	13492
324°	TDZE	1167
	Apt Elev	1189

RNAV (RNP) Z RWY 32R

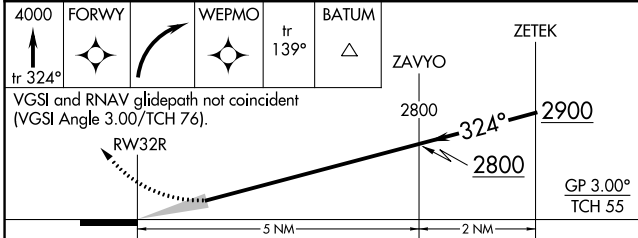
GRANT COUNTY INTL (MWH)

RNP AR APCH-GPS.		MALSR	MISSED APPROACH: Climb to 4000 on track 324° to FORWY right turn to WEPMO and track 139° to BATUM and hold.
<p>▼ For uncompensated Baro-VNAV systems, procedure NA below -15°C or above 54°C. For inoperative ALS increase RNP 0.10 visibility all Cats to RVR 4000, increase RNP 0.30 visibility all Cats to RVR 6000.</p>			

ATIS 119.05	GRANT COUNTY APP CON ★ 126.4 379.95	GRANT COUNTY TOWER ★ 118.25 (CTAF) 257.8 (EAST) 128.0 257.8 (WEST)	GND CON 121.9	UNICOM 122.95
-----------------------	---	--	-------------------------	-------------------------



4000	FORWY	WEPMO	BATUM	ZAVYO	ZETEK
tr 324°			tr 139°		



CATEGORY	A	B	C	D
RNP 0.10 DA		1417/24	250 (300-½)	
RNP 0.30 DA		1564/35	397 (400-⅝)	

AUTHORIZATION REQUIRED

ELEV 1189	TDZE 1167
-----------	-----------

REIL Rwy 4

REIL Rwys 14L and 22

HIRL Rwy 14L-32R

MIRL Rwys 4-22 and 18-36

NW-1, 11 JUL 2024 to 08 AUG 2024

NW-1, 11 JUL 2024 to 08 AUG 2024