

APP CRS 144°	Rwy Idg 13503
	TDZE 1169
	Apt Elev 1189

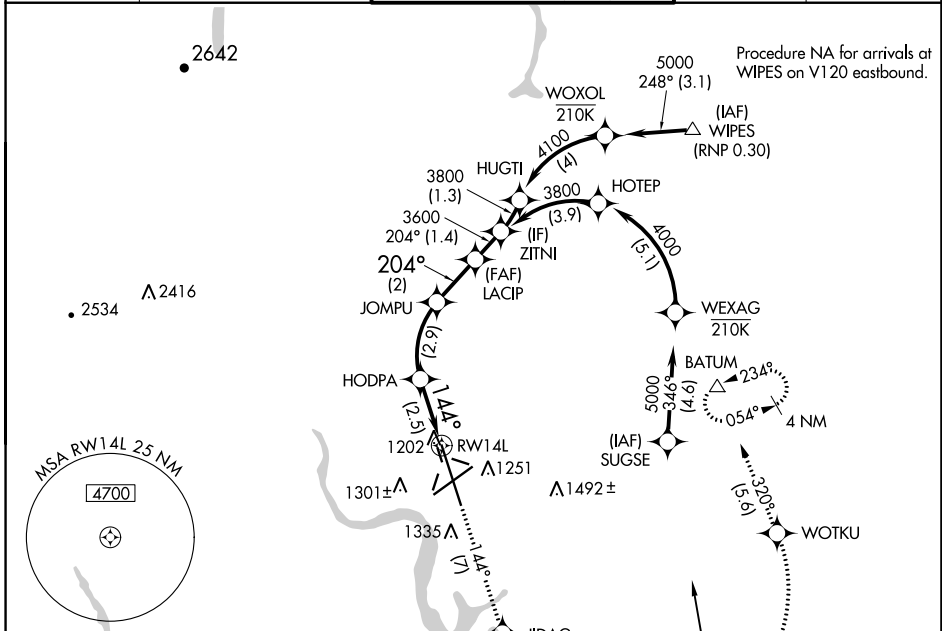
RNAV (RNP) Z RWY 14L

GRANT COUNTY INTL (MWH)

V For uncompensated Baro-VNAV systems, procedure NA below -17°C (2°F) or above 47°C (116°F). RF required. GPS required.

MISSED APPROACH: Climb to 4000 on track 144° to JIDAG left turn to WOTKU and track 320° to BATUM and hold.

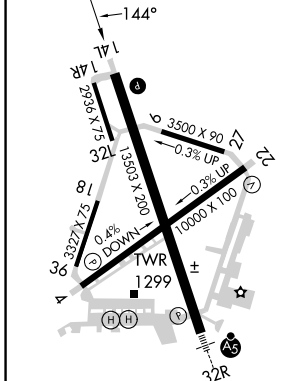
ATIS 119.05	GRANT COUNTY APP CON * 126.4 379.95	GRANT COUNTY TOWER * 118.25 (CTAF) 0 257.8 (EAST) 128.0 257.8 (WEST)	GND CON 121.9	UNICOM 122.95
-----------------------	---	--	-------------------------	-------------------------



NW-1, 08 AUG 2024 to 05 SEP 2024

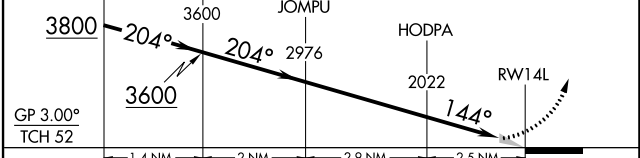
NW-1, 08 AUG 2024 to 05 SEP 2024

ELEV 1189	D	TDZE 1169
-----------	----------	-----------



REIL Rwy 4 **I**
REIL Rwy 14L and 22
HIRL Rwy 14L-32R
MIRL Rwy 4-22 and 18-36

VGSI and RNAV glidepath not coincident (VGSI Angle 3.00/TCH 75).	4000 ↑ tr 144°	JIDAG	WOTKU	BATUM
ZITNI	LACIP	JOMPU	HODPA	tr 320°



CATEGORY	A	B	C	D
RNP 0.10 DA		1419-3/4	250 (300-3/4)	
RNP 0.30 DA		1479-1	310 (300-1)	

AUTHORIZATION REQUIRED