

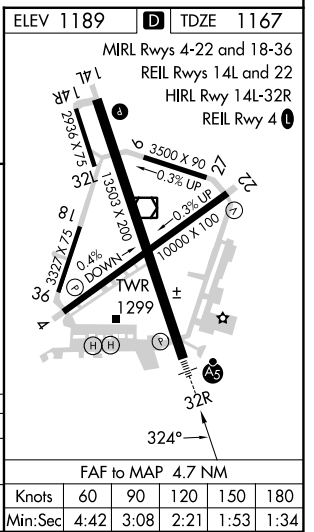
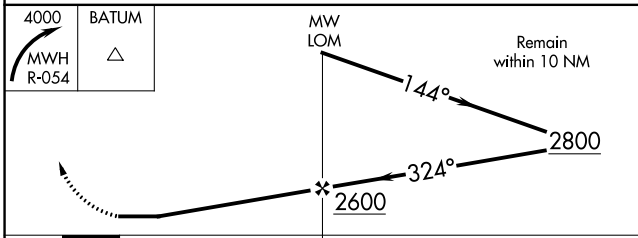
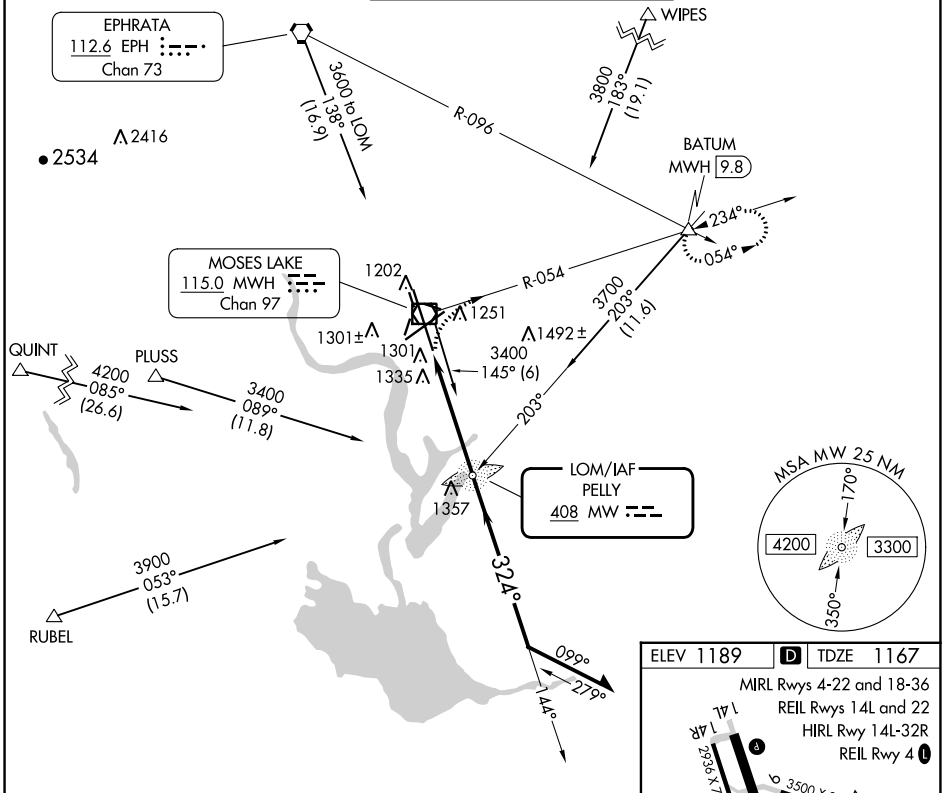
LOM MW 408	APP CRS 324°	Rwy Idg 13492	TDZE 1167
		Apt Elev 1189	

NDB RWY 32R

GRANT COUNTY INTL (MWH)

MALSR MISSED APPROACH: Climbing right turn to 4000 via MWH R-054 to BATUM INT/MWH 9.8 DME and hold.	
--	--

ATIS 119.05	GRANT COUNTY APP CON * 126.4 379.95	GRANT COUNTY TOWER * 118.25 (CTAF) 257.8 (EAST) 128.0 257.8 (WEST)	GND CON 121.9	UNICOM 122.95
-----------------------	---	---	-------------------------	-------------------------



CATEGORY	A	B	C	D
S-32R	1680/40 513 (500-¾)		1680/50 513 (500-1)	1680-1½ 513 (500-1½)
CIRCLING	1680-1 491 (500-1)		1680-1½ 491 (500-1½)	1820-2 631 (700-2)

NW-1, 03 OCT 2024 to 31 OCT 2024

NW-1, 03 OCT 2024 to 31 OCT 2024