

LOC I-MWH 109.5	APP CRS 324°	Rwy Idg 13492 TDZE 1167 Apt Elev 1189
---------------------------	------------------------	--

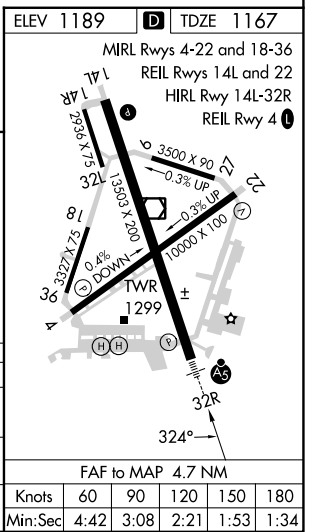
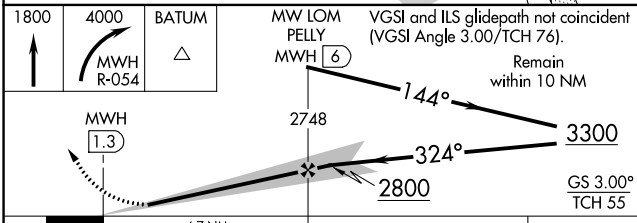
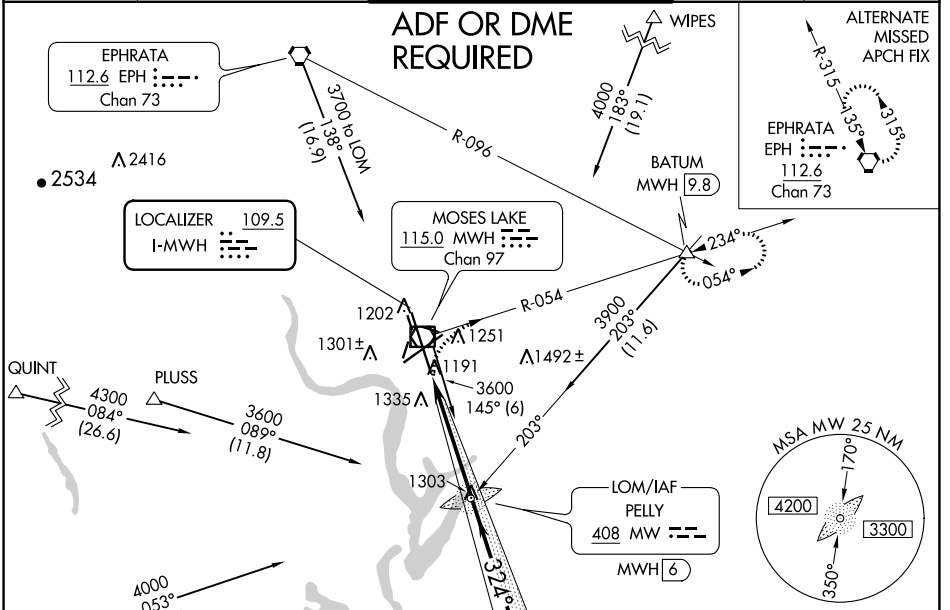
ILS or LOC RWY 32R

GRANT COUNTY INTL (MWH)

⚠ When local altimeter setting not received, use Ephrata altimeter setting; increase all DA/MDA 40 feet and Circling Cat D visibility 1/4 SM. For inop MALS/R, increase S-LOC 32R Cat D visibility to RVR 5000. *RVR 1800 authorized with use of FD or AP or HUD to DA, NA when using Ephrata altimeter setting.

MALS MISSED APPROACH: Climb to 1800, then climbing right turn to 4000 on MWH R-054 to BATUM INT/MWH 9.8 DME and hold, continue climb-in-hold to 4000.

ATIS 119.05	GRANT COUNTY APP CON * 126.4 379.95	GRANT COUNTY TOWER * 118.25 (CTAF) 0 257.8 (EAST) 128.0 257.8 (WEST)	GND CON 121.9	UNICOM 122.95
-----------------------	---	--	-------------------------	-------------------------



CATEGORY	A	B	C	D
S-ILS 32R*	1367/24		200 (200-1/2)	
S-LOC 32R	1440/24		273 (300-1/2)	
CIRCLING	1680-1 491 (500-1)		1680-1 1/2 491 (500-1 1/2)	
			1440/40 273 (300-3/4)	
			1820-2 631 (700-2)	

NW-1, 11 JUL 2024 to 08 AUG 2024

NW-1, 11 JUL 2024 to 08 AUG 2024