

MARIETTA, GEORGIA

# RNAV (GPS) RWY 29

APCH CRS	Rwy Idg	10,002
289°	TDZE	1014
	Arprt Elev	1069

- (USAF)

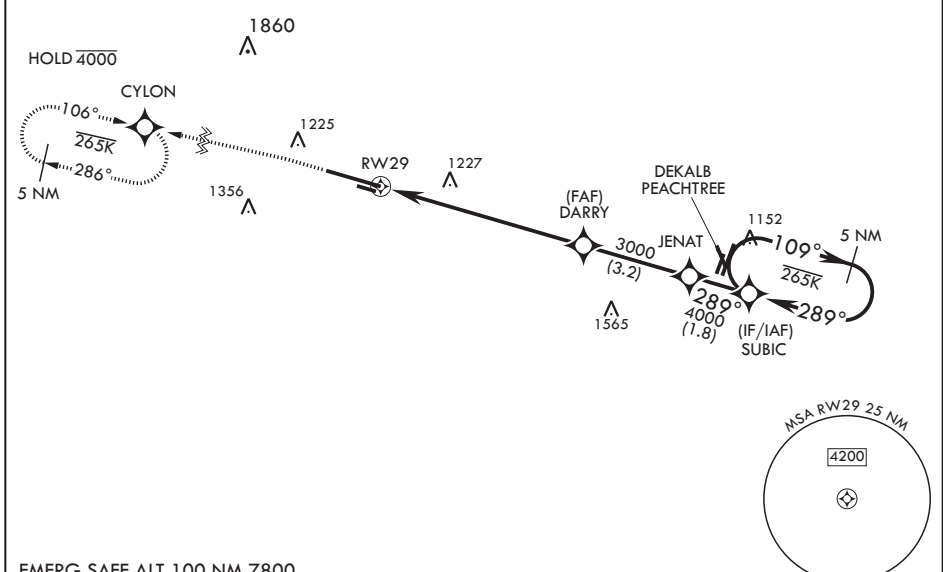
DOBBINS ARB (KMGE)

RNP APCH. DME/DME RNP- 0.3 NA	SALS	MISSED APPROACH: Climb to 2000 then climbing left turn to 3000 direct CYLON and hold.
<p>▼ * When ALS inop, increase vis to 1 3/8 miles.                  ** When ALS inop, increase CAT AB RVR to 55 and vis to 1 mile, CAT CDE vis to 1 3/8 miles.</p>	(A2)	

ATIS★ 269.5	ATLANTA APP CON/DEP CON 121.0 268.7	TOWER★ 120.75 370.875	GND CON 125.3 275.8	ASR
----------------	--	--------------------------	------------------------	-----

\*\*\* Circling not authorized N of Rwy 11-29 for CAT DE. Circling to assault strip not authorized.

For uncompensated Baro-VNAV systems, LNAV/VNAV NA below -17°C or above 54°C.



EMERG SAFE ALT 100 NM 7800

<p>2000 crs 289°</p> <p>3000</p> <p>CYLON</p>	<p>5 NM Holding Pattern</p> <p>JENAT</p> <p>SUBIC</p> <p>DARRY</p> <p>RWY 29</p> <p>1.5 NM to RWY 29</p> <p>3000</p> <p>4000</p> <p>4000</p> <p>6.1 NM</p> <p>GP 3.00°</p> <p>TCH 58</p>	<p>ELEV 1069</p> <p>TDZE 1014</p> <p>BCN TW'R</p> <p>110°</p> <p>349° x 60°</p> <p>0.8% UP</p> <p>0.8% UP</p> <p>289°</p> <p>ASSAULT STRIP</p>				
CATEGORY	A	B	C	D	E	
LNAV/VNAV DA*	1480/60		466	(500-1½)		
LNAV MDA**	1520/40	506 (500-¾)	1520-1¼	506	(500-1¼)	
CIRCLING***	1580-1 511 (600-1)	1620-1 551 (600-1)	1760-2 691 (700-2)	1760-2¼ 691 (700-2¼)	1760-2½ 691 (700-2½)	
	HIRL all Rwys REIL Rwys 11, 29					

MARIETTA, GEORGIA

33°55'N - 84°31'W

DOBBINS ARB (KMGE)

Amdt 3 11JUL24

# RNAV (GPS) RWY 29

SE-4, 03 OCT 2024 to 31 OCT 2024

SE-4, 03 OCT 2024 to 31 OCT 2024