


MARIETTA, GEORGIA

RNAV (GPS) RWY 11

APCH CRS 109°	Rwy Idg 10,002
	TDZE 1069
	Arprt Elev 1069

-(USAF)

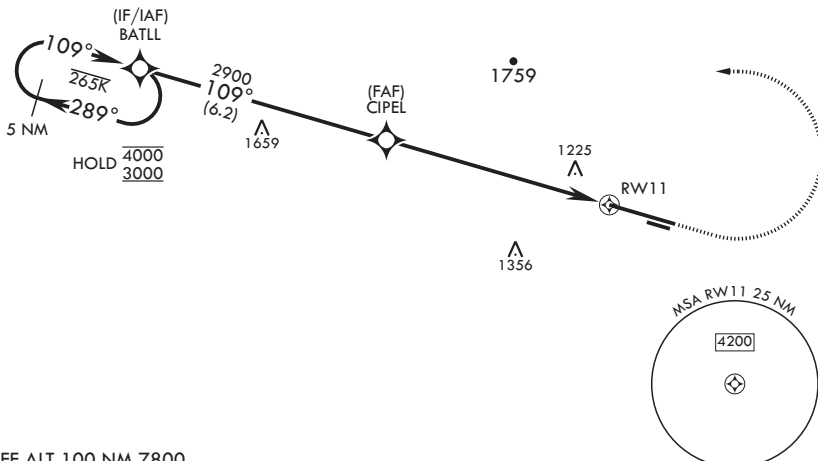
DOBBINS ARB (KMGE)

RNP APCH. DME/DME RNP-0.3 NA	ALSF-1 	MISSED APPROACH: Climb to 2000 then climbing left turn to 3000 direct BATLL and hold.
<p>▼ * When ALS inop, increase vis to 1 3/8 miles.</p> <p>** When ALS inop, increase CAT AB RVR to 55 and vis to 1 mile, CAT CDE vis to 1 1/2 miles.</p>		

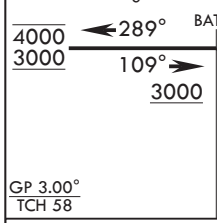
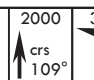
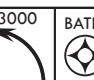

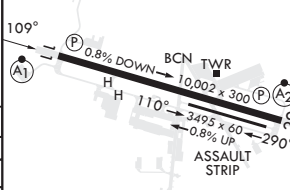

ATIS★ 269.5	ATLANTA APP CON/DEP CON 121.0 268.7	TOWER★ 120.75 370.875	GND CON 125.3 275.8	ASR
-----------------------	---	---------------------------------	-------------------------------	-----

*** Circling NA N of Rwy 11-29 for CAT DE aircraft. Circling to assault strip not authorized.

LNAV/VNAV NA below -17°C or above 54°C.



EMERG SAFE ALT 100 NM 7800

5 NM Holding Pattern		2000		3000		BATLL		ELEV 1069		TDZE 1069	
											
GP 3.00° TCH 58		2900		1.5 NM to RW11		RW11					
CATEGORY	A	B	C	D	E						
LNAV/VNAV DA*	1568/50		499		(500-1)						
LNAV MDA**	1600/40 531 (600-¾)		1600/55 531 (600-1)								
 CIRCLING***	1600-1 531 (600-1)	1620-1 551 (600-1)	1760-2 691 (700-2)	1760-2¼ 691 (700-2¼)	1760-2½ 691 (700-2½)	HIRL all Rwys REIL Rwys 11, 29					

MARIETTA, GEORGIA

33°55'N - 84°31'W

DOBBINS ARB (KMGE)

Amdt 3 11JUL24

RNAV (GPS) RWY 11

SE-4, 31 OCT 2024 to 28 NOV 2024

SE-4, 31 OCT 2024 to 28 NOV 2024