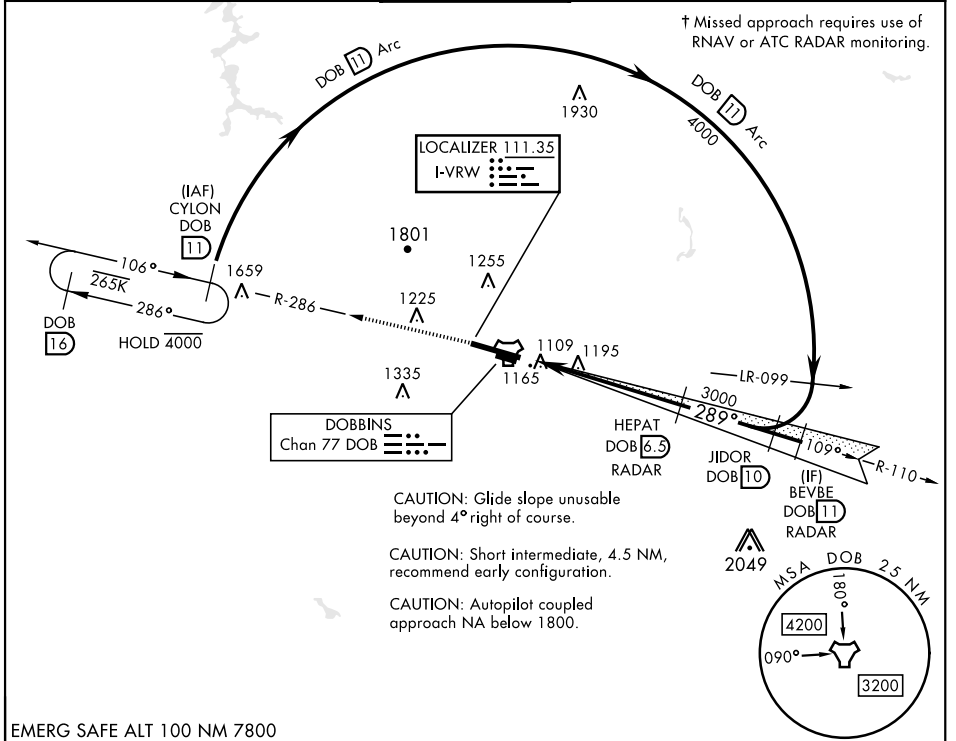


# ILS or LOC RWY 29

LOC I-VRW <b>111.35</b>	APCH CRS <b>289°</b>	Rwy Idg <b>10,002</b> TDZE <b>1014</b> Arprt Elev <b>1069</b>	[USAF]	DOBBINS ARB (KMGE)
----------------------------	-------------------------	---	--------	--------------------

TACAN or RADAR required. * When ALS inop, increase CAT AB RVR to 55 and vis to 1 mile, CAT CDE vis to 1 3/8 miles. ** Circling not authorized N of Rwy 11-29 for CAT DE aircraft. Circling to assault strip not authorized.	SALSF A2	† MISSED APPROACH: Climb to 3000 on DOB TACAN R-286 to CYLON and hold.
---	-------------	--

ATIS ★ <b>269.5</b>	ATLANTA APP CON <b>121.0 268.7</b>	TOWER ★ <b>120.75 370.875</b>	GND CON <b>125.3 275.8</b>	ASR
------------------------	---------------------------------------	----------------------------------	-------------------------------	-----



EMERG SAFE ALT 100 NM 7800

3000 DOB R-286	CYLON DOB 11	HEPAT DOB 6.5 RADAR	JIDOR R-110 DOB 10	BEVBE R-110 DOB 11 RADAR	CYLON R-286 DOB 11	ELEV 1069	TDZE 1014
TACAN	HIDIT DOB 0.9	2933	4000	4000	4000		
CATEGORY	A	B	C	D	E	HIRL Rwy 11-29 REIL Rwy 11 and 29	
S-ILS 29	1214/40		200	(200-3/4)		FAF to MAP 5.5 NM	
S-LOC 29*	1520/40	506 (500-3/4)	1520-1 1/4	506	(500-1 1/4)		Knots: 60 90 120 150 180
** CIRCLING	1580-1 511 (600-1)	1620-1 551 (600-1)	1760-2 691 (700-2)	1760-2 1/4 691 (700-2 1/4)	1760-2 1/2 691 (700-2 1/2)		Min:Sec: 5:30 3:40 2:45 2:12 1:50

# ILS or LOC RWY 29

SE-4, 03 OCT 2024 to 31 OCT 2024

SE-4, 03 OCT 2024 to 31 OCT 2024