

MARIETTA, GEORGIA

# IIS or LOC RWY 11

LOC I-DJR <b>109.7</b>	APCH CRS <b>109°</b>	Rwy Idg <b>10,002</b> TDZE <b>1069</b> Arprt Elev <b>1069</b>	[USAF]	DOBBINS ARB (KMGE)
---------------------------	-------------------------	---	--------	--------------------

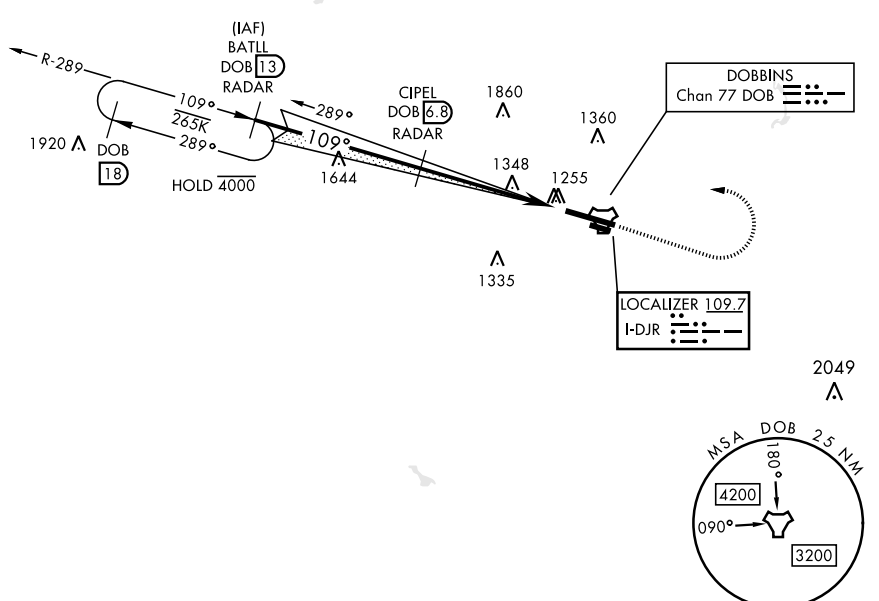
TACAN or RADAR required.

A1
ALSIF-1
MISSED APPROACH: Climb to 2000 track 109°, then climbing left turn to 3000, intercept the DOB TACAN R-289 to BATLL and hold.

ATIS ★ <b>269.5</b>	ATLANTA APP CON <b>121.0 268.7</b>	TOWER ★ <b>120.75 370.875</b>	GND CON <b>125.3 275.8</b>	ASR
------------------------	---------------------------------------	----------------------------------	-------------------------------	-----

\*\*\* Circling not authorized N of Rwy 11-29 for CAT DE aircraft, Circling to assault strip not authorized.

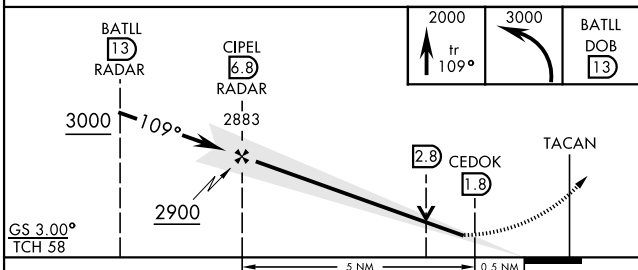
† Missed approach requires use of RNAV or ATC RADAR monitoring.



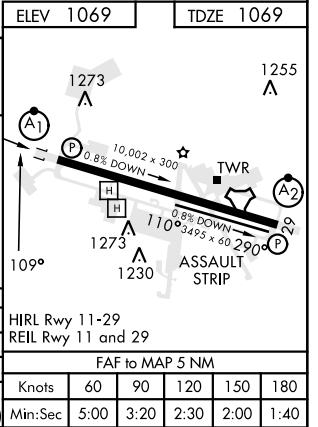
SE-4, 03 OCT 2024 to 31 OCT 2024

SE-4, 03 OCT 2024 to 31 OCT 2024

EMERG SAFE ALT 100 NM 7800



	A		B		C	D	E
S-IIS 11*	1431/40		362		(400-¾)		
S-LOC 11**	1600/40	531 (600-¾)	1600/55		531	(600-1)	
*** CIRCLING	1600-1	1620-1	1760-2	1760-2¼	1760-2½		
	531 (600-1)	551 (600-1)	691 (700-2)	691 (700-2¼)	691 (700-2½)		



MARIETTA, GEORGIA 33°55'N-84°31'W DOBBINS ARB (KMGE)

Amdt 7 11JUL24

# IIS or LOC RWY 11

HIRL Rwy 11-29 REL Rwy 11 and 29					
FAF to MAP 5 NM					
Knots	60	90	120	150	180
Min:Sec	5:00	3:20	2:30	2:00	1:40