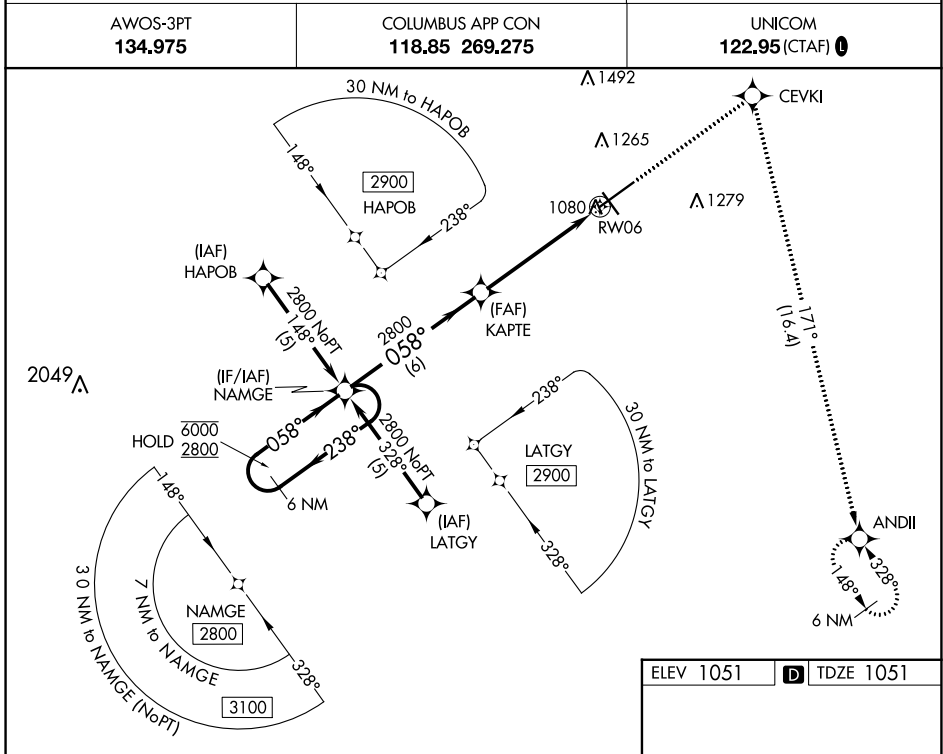


WAAS CH 58115 W06A	APP CRS 058°	Rwy ldg TDZE Apt Elev	9009 1051 1051
--	------------------------	-----------------------------	---

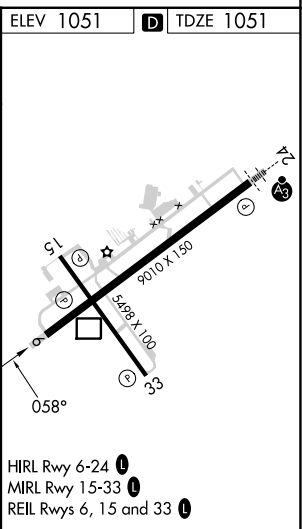
RNAV (GPS) RWY 6

SPRINGFIELD/BECKLEY MUNI (SGH)

RNP APCH - GPS		MISSED APPROACH: Climb to 3000 direct CEVKI and right turn on track 171° to ANDII and hold.
AWOS-3PT 134.975	COLUMBUS APP CON 118.85 269.275	UNICOM 122.95 (CTAF) 1



6 NM Holding Pattern		NAMGE		KAPTE		3000	CEVKI	ANDII
6000 ← 238°		← 058°		2800		↑	✦	tr 171° ✦
2800		2800		2800		1.3 NM to RW06		
GP 3.00°		← 6 NM		← 4 NM		← 1.3 NM		
TCH 45								
CATEGORY	A	B	C	D				
LPV DA		1354-7/8	303 (400-7/8)					
LNNAV/VNAV DA		1429-1	378 (400-1)					
LNNAV MDA	1500-1	449 (500-1)	1500-1 3/8	449 (500-1 3/8)				
CIRCLING	1500-1 449 (500-1)	1580-1 529 (600-1)	1580-1 1/2 529 (600-1 1/2)	1620-2 569 (600-2)				



EC-2, 31 OCT 2024 to 28 NOV 2024

EC-2, 31 OCT 2024 to 28 NOV 2024