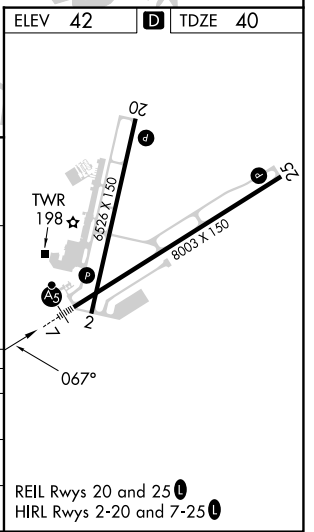
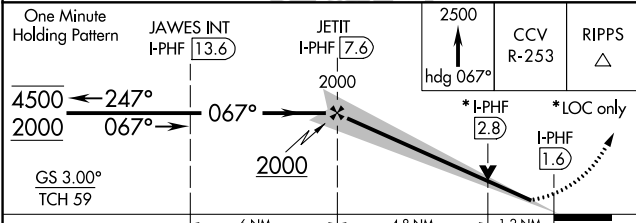
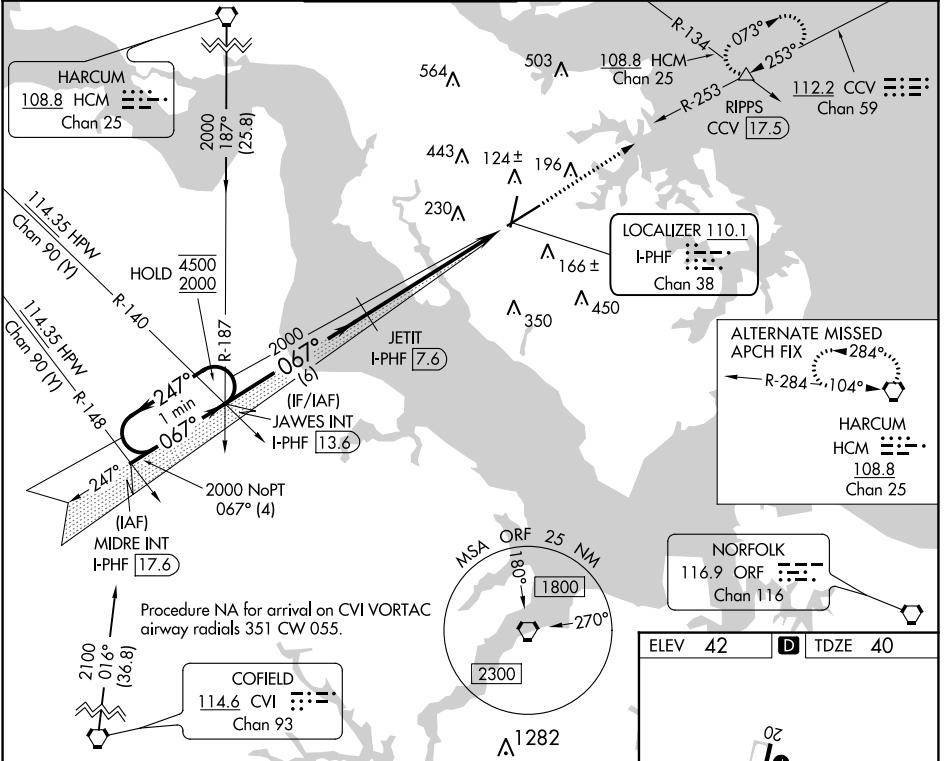


LOC/DME I-PHF 110.1 Chan 38	APP CRS 067°	Rwy Idg TDZE Apt Elev	8003 40 42
--	------------------------	-----------------------------	---------------------------------------

ILS or LOC RWY 7
NEWPORT NEWS/WILLIAMSBURG INTL (PHF)

DME required.		MALS R	MISSED APPROACH: Climb to 2500 on heading 067° and on CCV VORTAC R-253 to RIPPS INT/CCV 17.5 DME and hold, continue climb-in-hold to 2500.		
# RVR 1800 authorized with use of FD or AP or HUD to DA.					
ATIS 128.65	NORFOLK APP CON 125.7 335.625	NEWPORT NEWS TOWER* 118.7 (CTAF) 0 257.9	GND CON 121.9 348.6	CLNC DEL 121.65 225.4	UNICOM 122.95



CATEGORY	A	B	C	D
S-ILS 7 #	240/24		200 (200-½)	
S-LOC 7	480/24	440 (500-½)	480/40	440 (500-¾)
CIRCLING	520-1 478 (500-1)	540-1 498 (500-1)	760-2 718 (800-2)	780-2¼ 738 (800-2¼)

NE-3, 31 OCT 2024 to 28 NOV 2024

NE-3, 31 OCT 2024 to 28 NOV 2024

REIL Rwy 20 and 25
HIRL Rwy 2-20 and 7-25