

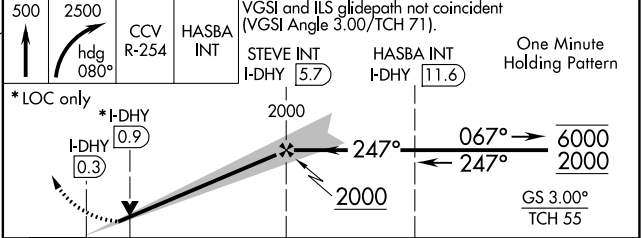
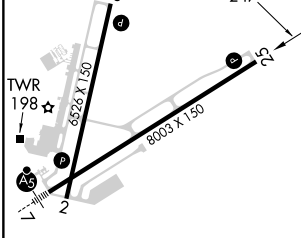
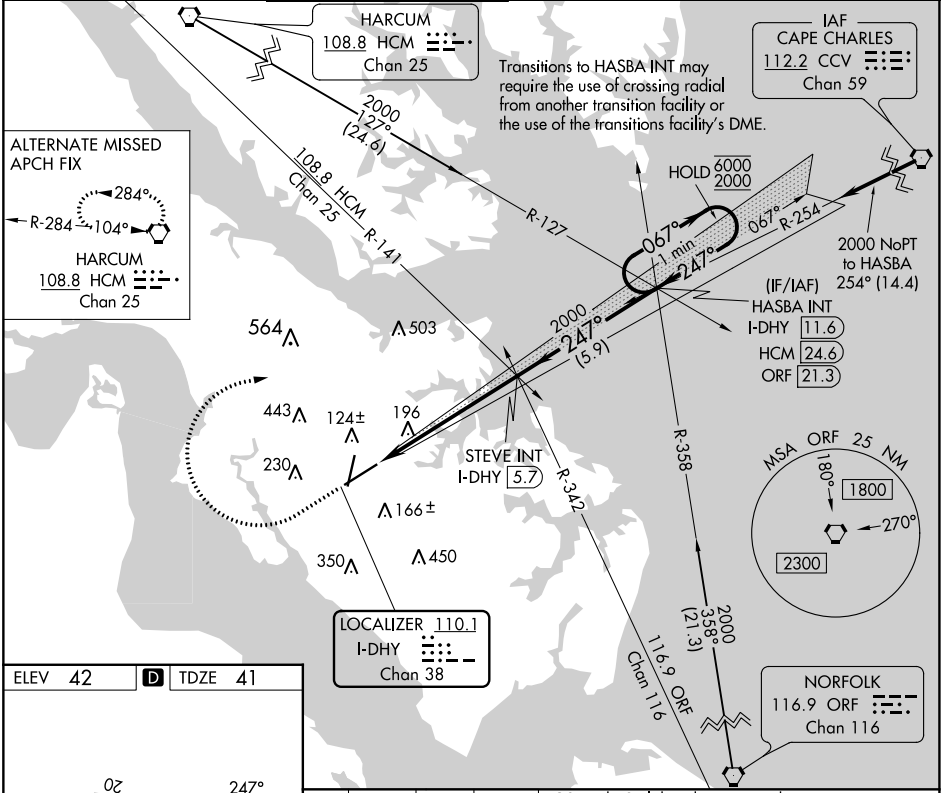
LOC/DME I-DHY	APP CRS	Rwy Idg	<b>8003</b>
<b>110.1</b>	<b>247°</b>	TDZE	<b>41</b>
Chan <b>38</b>		Apt Elev	<b>42</b>

# ILS or LOC RWY 25

NEWPORT NEWS/WILLIAMSBURG INTL (PHF)

**MISSED APPROACH:** Climb to 500 then climbing right turn to 2500 on heading 080° and CCV VORTAC R-254 to HASBA INT/I-DHY 11.6 DME and hold.

ATIS <b>128.65</b>	NORFOLK APP CON <b>125.7</b>	NEWPORT NEWS TOWER ★ <b>118.7</b> (CTAF) <b>257.9</b>	GND CON <b>121.9 348.6</b>	CLNC DEL <b>121.65 225.4</b>	UNICOM <b>122.95</b>
-----------------------	---------------------------------	--	-------------------------------	---------------------------------	-------------------------



REIL Rws 20 and 25				
HIRL Rws 2-20 and 7-25				
FAF to MAP 6 NM				
Knots	60	90	120	150
Min:Sec	6:00	4:00	3:00	2:24
CIRCLING	520-1 478 (500-1)	540-1 498 (500-1)	760-2 718 (800-2)	780-2¼ 738 (800-2¼)

NE-3, 31 OCT 2024 to 28 NOV 2024

NE-3, 31 OCT 2024 to 28 NOV 2024