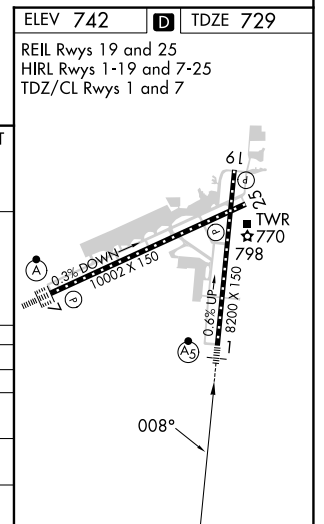
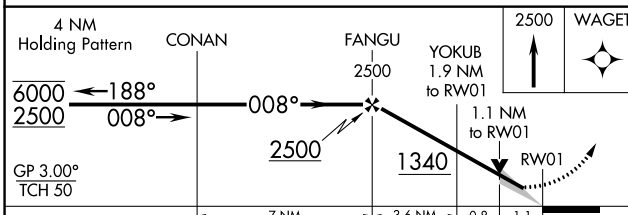
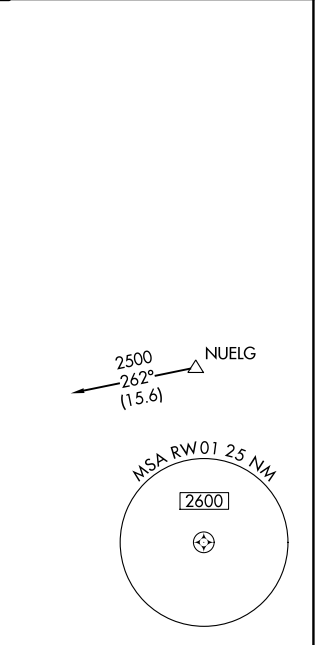
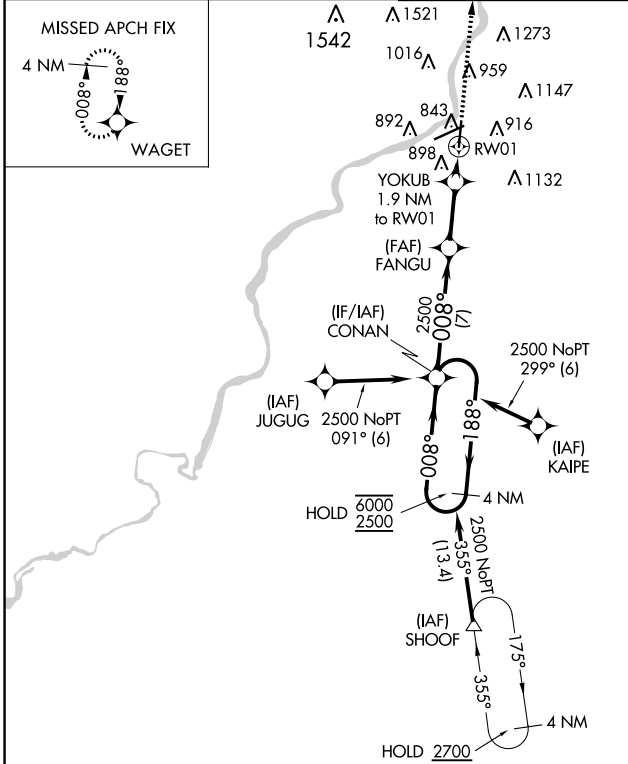


WAAS CH <b>42720</b> <b>W01A</b>	APP CRS <b>008°</b>	Rwy Idg TDZE Apt Elev	<b>8199</b> <b>729</b> <b>742</b>
--	------------------------	-----------------------------	---

# RNAV (GPS) RWY 1

CHICAGO/ROCKFORD INTL (RFD)

RNP APCH - GPS.		MALSR		MISSED APPROACH: Climb to 2500 direct WAGET and hold.	
For uncompensated Baro-VNAV systems, procedure NA below -16°C or above 54°C. For inop ALS, increase LNAV Cats C and D visibility to RVR 6000. *RVR 1800 authorized with use of FD or AP or HUD to DA.					
ATIS <b>127.6</b>	ROCKFORD APP CON <b>121.0 327.0</b>	ROCKFORD TOWER <b>118.1 290.375</b>	GND CON <b>121.9 290.375</b>	CLNC DEL <b>119.25</b>	



CATEGORY	A	B	C	D
LPV DA*	929/24		200 (200-½)	
LNAV/VNAV DA	1200/60		471 (500-1¼)	
LNAV MDA	1120/24	391 (400-½)	1120/35	391 (400-¾)
CIRCLING	1220-1 478 (500-1)	1280-1 538 (600-1)	1320-1½ 578 (600-1½)	1460-2¼ 718 (800-2¼)

EC-3, 03 OCT 2024 to 31 OCT 2024

EC-3, 03 OCT 2024 to 31 OCT 2024