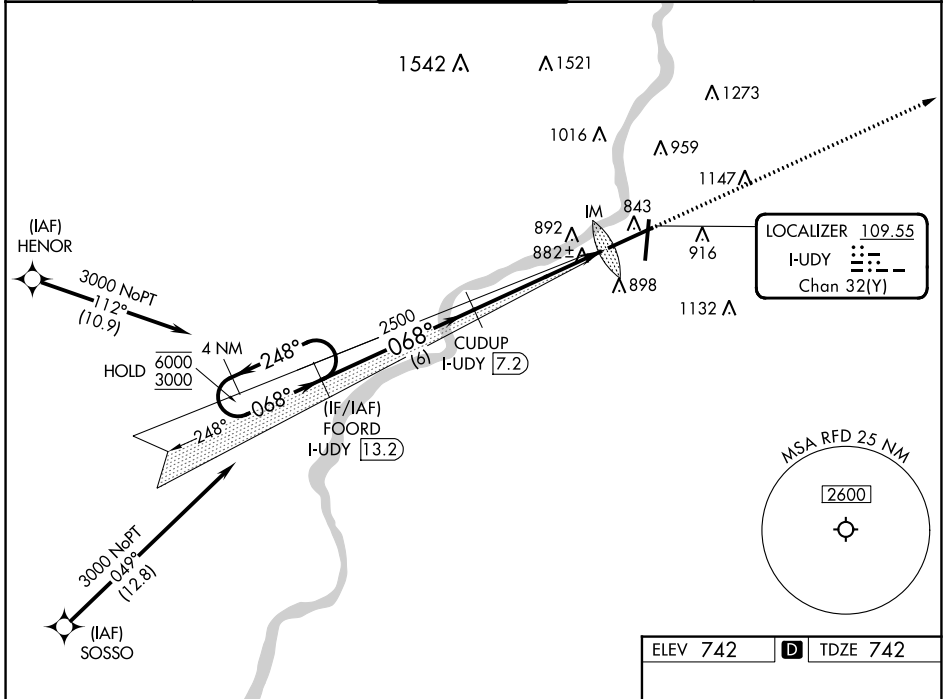


LOC/DME I-UDY 109.55 Chan 32 (Y)	APP CRS 068°	Rwy Idg 10002 TDZE 742 Apt Elev 742
--	------------------------	--

ILS RWY 7 (SA CAT I)
CHICAGO/ROCKFORD INTL (RFD)

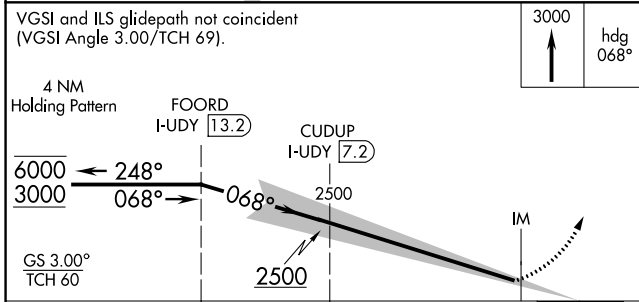
RNP APCH - GPS. From HENOR or SOSSO. RADAR required.		ALSF-2	MISSED APPROACH: Climb to 3000 on heading 068°. Expect RADAR vectors. (RADAR required).	
ASR	Requires specific OPSPEC, MSPEC, or LOA approval.			

ATIS 127.6	ROCKFORD APP CON 121.0 327.0	ROCKFORD TOWER 118.1 290.375	GND CON 121.9 290.375	CLNC DEL 119.25
----------------------	--	--	---------------------------------	---------------------------

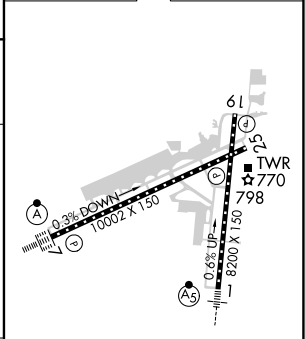


EC-3, 03 OCT 2024 to 31 OCT 2024

EC-3, 03 OCT 2024 to 31 OCT 2024



ELEV 742	TDZE 742
----------	----------



CATEGORY	A	B	C	D
----------	---	---	---	---

S-ILS 7	RA 164/14 150 DA 892
---------	----------------------

SA CATEGORY I ILS - SPECIAL AIRCREW & AIRCRAFT CERTIFICATION REQUIRED

REIL Rwy's 19 and 25
HIRL Rwy's 1-19 and 7-25
TDZ/CL Rwy's 1 and 7