

LOS ALAMITOS, CALIFORNIA

# RNAV (GPS) RWY 22L

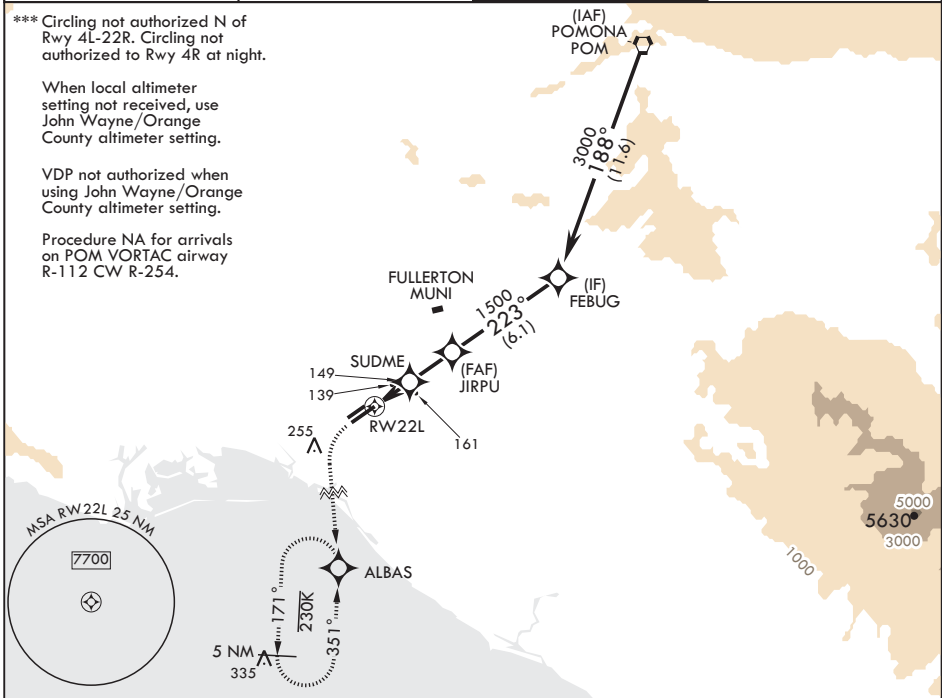
APCH CRS 223°	Rwy Idg 8001
	TDZE 36
	Arpt Elev 36

-(USA)

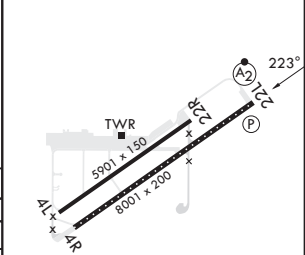
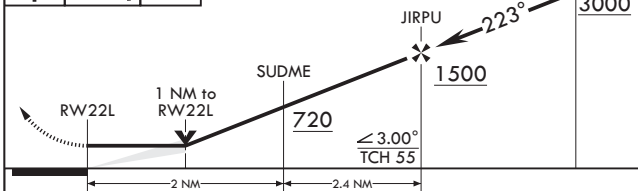
LOS ALAMITOS AAF (KSLI)

RNP APCH- GPS	SALS 	MISSED APPROACH: Climb to 600 then climbing left turn to 2100 direct ALBAS and hold.
<p>▼ * When ALS inop, increase CAT CD vis to 1 1/8 miles.                  ** When ALS inop, using John Wayne/Orange County altimeter setting, increase CAT CD vis to 1 1/4 miles.</p>		

ATIS* 118.875 379.975	SOCAL APP CON/DEP CON 125.35 316.125	TOWER* 123.85 (CTAF) 251.15	GND CON 126.95 257.95
--------------------------	---	--------------------------------	--------------------------



600	2100	ALBAS	VGSI and descent angles not coincident.	FEBUG	ELEV 36	TDZE 36
-----	------	-------	---	-------	---------	---------



CATEGORY	A	B	C	D
LNAV MDA*	420-1 384 (400-1)			
CIRCLING***	440-1 404 (500-1)	500-1 464 (500-1)	600-1½ 564 (600-1½)	600-2 564 (600-2)
JOHN WAYNE/ORANGE COUNTY ALTIMETER SETTING MINIMUMS				
LNAV MDA**	460-1 424 (500-1)			
CIRCLING***	480-1 444 (500-1)	540-1 504 (600-1)	640-1¼ 604 (700-1¼)	640-2 604 (700-2)

HIRL Rwy 4R-22L  
MIRL Rwy 4L-22R  
REIL Rwy 22L

LOS ALAMITOS, CALIFORNIA

33°47'N - 118°03'W

LOS ALAMITOS AAF (KSLI)

Amdt 2 11JUL24

# RNAV (GPS) RWY 22L

SW-3, 31 OCT 2024 to 28 NOV 2024

SW-3, 31 OCT 2024 to 28 NOV 2024