

AL-948 (FAA)

SARDI ONE ARRIVAL (RNAV) Arrival Routes

NEW YORK, NEW YORK

NEW YORK APP CON

120.05 343.75

BDR ATIS

119.15

FRG ATIS

126.65

GON ATIS

127.0

HVN ATIS

133.65

ISP ATIS

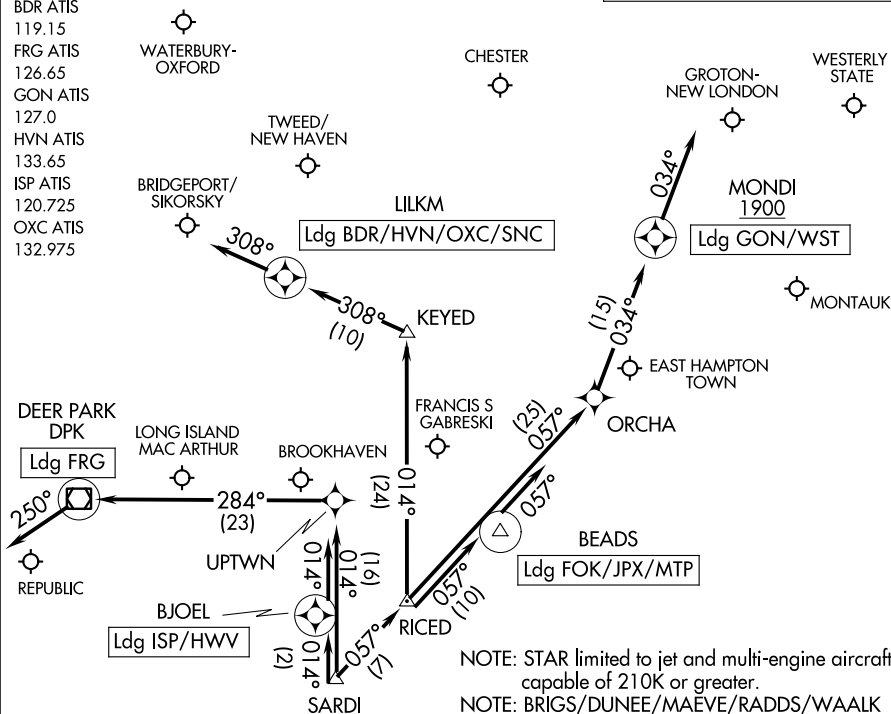
120.725

QXC ATIS

132 975

RNAV 1 - DME/DME/IRU or GPS.

RADAR required.



NOTE: Chart not to scale.

NOTE: STAR limited to jet and multi-engine aircraft capable of 210K or greater.

NOTE: BRIGS/DUNEE/MAEVE/RADDS/WAALK
Transitions, ATC assigned only.

NOTE: This procedure has extended over water routes.

ARRIVAL ROUTE DESCRIPTION

LANDING BDR/HVN/OXC/SNC: From SARDI on track 057° to RICED, then on track 014° to KEYED, then on track 308° to LULKM, then on track 308°.
Expect RADAR vectors to final approach course.

LANDING FOK/JPX/MTP: From SARDI on track 057° to RICED, then on track 057° to BEADS, then on track 057°. Expect RADAR vectors to final approach course.

LANDING FRG: From SARDI on track 014° to UPTWN, then on track 284° to DPK VOR/DME, then on track 250°. Expect RADAR vectors to final approach course.

LANDING GON/WST: From SARDI on track 057° to RICED, then on track 057° to ORCHA, then on track 034° to cross MONDI at or above 1900, then on track 034°. Expect RADAR vectors to final approach course.

LANDING ISP/HWV: From SARDI on track 014° to BJOEL, then on track 014°. Expect RADAR vectors to final approach course.

SARDI ONE ARRIVAL (RNAV) Arrival Routes

NEW YORK, NEW YORK

(SARDI.SARDI1) 02OCT25

NE-2, 02 OCT 2025 to 30 OCT 2025