

WAAS CH <b>48942</b> <b>W36A</b>	APP CRS <b>008°</b>	Rwy Idg TDZE Apt Elev	<b>6003</b> <b>869</b> <b>873</b>
--	------------------------	-----------------------------	---

# RNAV (GPS) RWY 36

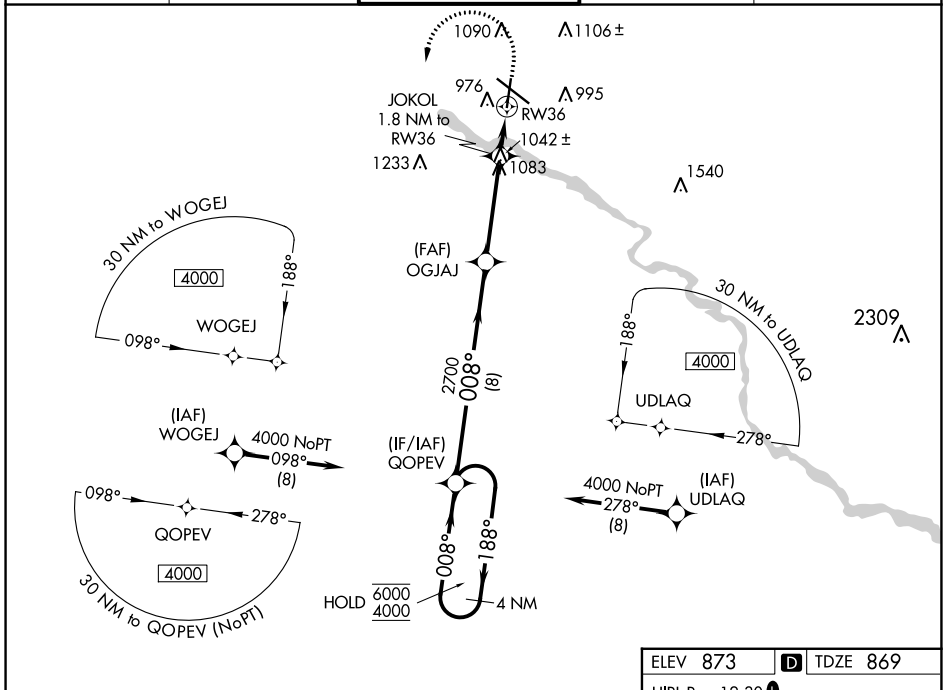
WATERLOO RGNL (A.I.O)

RNP APCH-GPS.

**⚠** For uncompensated Baro-VNAV systems, LNAV/VNAV NA below -20°C or above 54°C.

MISSED APPROACH: Climb to 2000 then climbing left turn to 4000 direct QOPEV and hold.

ATIS <b>120.65</b>	WATERLOO APP CON * <b>118.9 251.15</b>	WATERLOO TOWER * <b>125.075 (CTAF) 0 257.8</b>	GND CON <b>121.9 269.1</b>	UNICOM <b>122.95</b>
-----------------------	---	---	-------------------------------	-------------------------

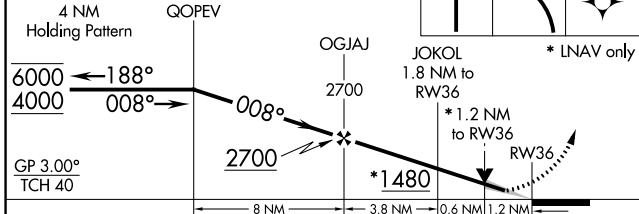


NC-3, 31 OCT 2024 to 28 NOV 2024

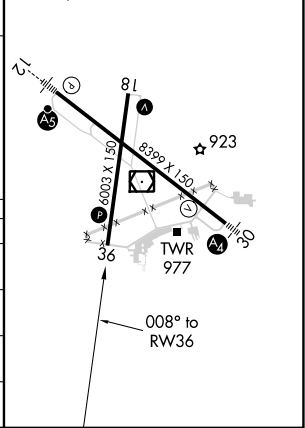
NC-3, 31 OCT 2024 to 28 NOV 2024

ELEV 873	<b>D</b> TDZE 869
----------	-------------------

VGSI and RNAV glidepath not coincident. (VGSI Angle 3.00/TCH 40).



HIRL Rwy 12-30  
MIRL Rwy 18-36  
REIL Rws 18 and 36



CATEGORY	A	B	C	D
LPV DA	1069-3/4		200 (200-3/4)	
LNAV/VNAV DA	1190-1		321 (400-1)	
LNAV MDA	1300-1	431 (500-1)	1300-1 1/4	431 (500-1 1/4)
<b>C</b> CIRCLING	1360-1 487 (500-1)	1400-1 527 (600-1)	1480-1 3/4 607 (700-1 3/4)	1600-2 1/4 727 (800-2 1/4)