

LOC/DME I-ALO <b>111.7</b> Chan <b>54</b>	APP CRS <b>308°</b>	Rwy Idg TDZE Apt Elev	<b>8399</b> <b>868</b> <b>873</b>
---	------------------------	-----------------------------	---

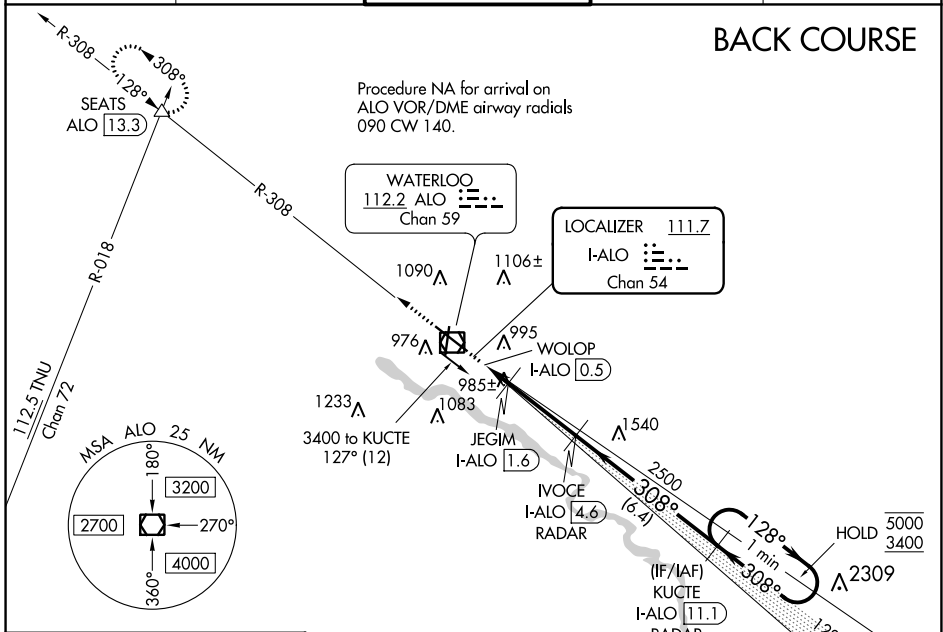
# LOC BC RWY 30

WATERLOO RGNL (A.LO)

DME required.		MALS	MISSED APPROACH: Climb to 3500 on ALO VOR/DME R-308 to SEATS INT/ALO 13.3 DME and hold.	
---------------	--	------	---	--

ATIS <b>120.65</b>	WATERLOO APP CON* <b>118.9 251.15</b>	WATERLOO TOWER* <b>125.075 (CTAF) 257.8</b>	GND CON <b>121.9 269.1</b>	UNICOM <b>122.95</b>
-----------------------	--	--	-------------------------------	-------------------------

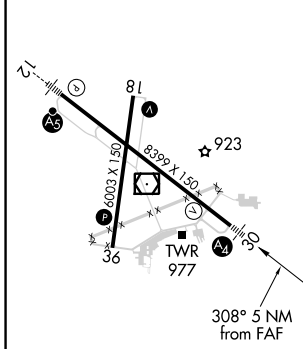
## BACK COURSE



NC-3, 31 OCT 2024 to 28 NOV 2024

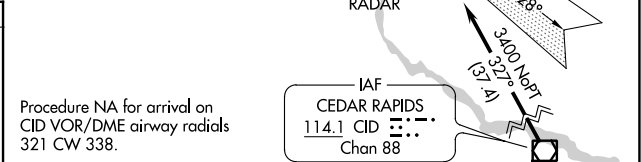
NC-3, 31 OCT 2024 to 28 NOV 2024

ELEV 873	<b>D</b>	TDZE 868
----------	----------	----------



HIRL Rwy 12-30  
MIRL Rwy 18-36  
REIL Rwy 18 and 36

FAF to MAP 4.1 NM					
Knots	60	90	120	150	180
Min:Sec	4:06	2:44	2:03	1:38	1:22



3500	SEATS	Disregard glide slope indications.		KUCTE	One Minute Holding Pattern
ALO R-308	△	I-ALO DME ANTENNA	JEGIM I-ALO 1.6	I-ALO 11.1	
		WOLOP I-ALO 0.5	IVOCE I-ALO 4.6	RADAR	
		3.00° TCH 52	2500	128°	5000
				←308°	3400
					Use I-ALO DME when on the localizer course.

CATEGORY	A	B	C	D
S-LOC 30		1240-¾	372 (400-¾)	
<b>C</b> CIRCLING	1360-1 487 (500-1)	1400-1 527 (600-1)	1480-1¾ 607 (700-1¾)	1600-2¼ 727 (800-2¼)