

WAAS CH 86617 W14A	APP CRS 135°	Rwy Idg TDZE Apt Elev	7302 803 808
--	------------------------	-----------------------------	---

RNAV (GPS) RWY 14

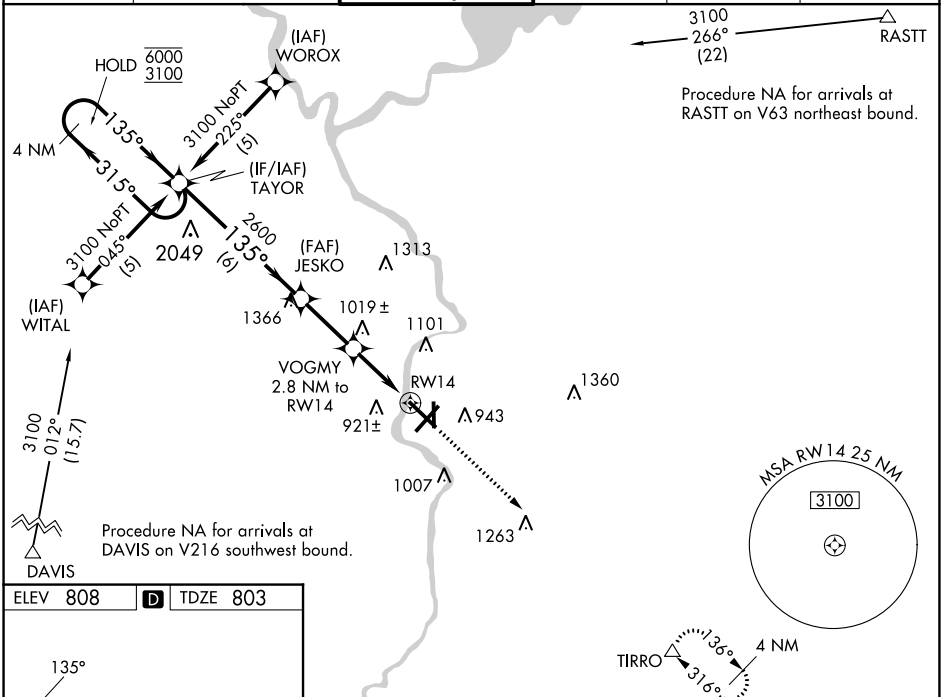
SOUTHERN WISCONSIN RGNL (JVL)

RNP APCH-GPS.

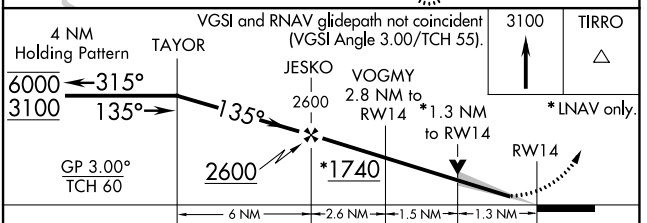
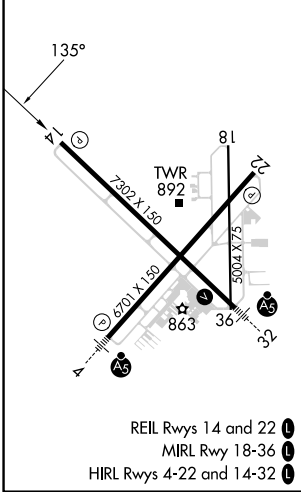
⚠ Circling Rwy 18 NA at night. Baro-VNAV NA when using Rockford altimeter setting. For uncompensated Baro-VNAV systems, LNAV/VNAV NA below -16°C or above 47°C. VDP NA when using Rockford altimeter setting. When local altimeter setting not received, use Rockford altimeter setting and increase LPV DA to 1072 feet, LNAV/VNAV DA to 1291 feet, and all MDAs 80 feet; increase LPV all Cats visibility $\frac{1}{8}$ SM, LNAV/VNAV all Cats visibility $\frac{1}{4}$ SM, LNAV Cat C/D visibility $\frac{1}{4}$ SM, and Circling Cat C/D visibility $\frac{1}{4}$ SM.

MISSED APPROACH: Climb to 3100 direct TIRRO and hold.

ATIS 128.25	ROCKFORD APP CON 121.0 327.0	JANESVILLE TOWER ★ 118.8 (CTAF) 0 225.4	GND CON 121.65	CLNC DEL 121.65	UNICOM 122.95
-----------------------	--	---	--------------------------	---------------------------	-------------------------



ELEV 808	D	TDZE 803
----------	----------	----------



CATEGORY	A	B	C	D
LPV DA		1003- $\frac{3}{4}$	200 (200- $\frac{3}{4}$)	
LNAV/VNAV DA		1222-1 $\frac{1}{8}$		419 (500-1 $\frac{1}{8}$)
LNAV MDA	1280-1	477 (500-1)	1280-1 $\frac{3}{8}$ 477 (500-1 $\frac{3}{8}$)	1280-1 $\frac{3}{8}$ 477 (500-1 $\frac{3}{8}$)
CIRCLING	1280-1 472 (500-1)	1320-1 512 (600-1)	1420-1 $\frac{3}{4}$ 612 (700-1 $\frac{3}{4}$)	1460-2 652 (700-2)

EC-3, 03 OCT 2024 to 31 OCT 2024

EC-3, 03 OCT 2024 to 31 OCT 2024