

LOC/DME I-REE	APP CRS	Rwy ldg	7302
111.35	316°	TDZE	806
Chan 50 (Y)		Apt Elev	808

ILS or LOC RWY 32

SOUTHERN WISCONSIN RGNL (JVL)

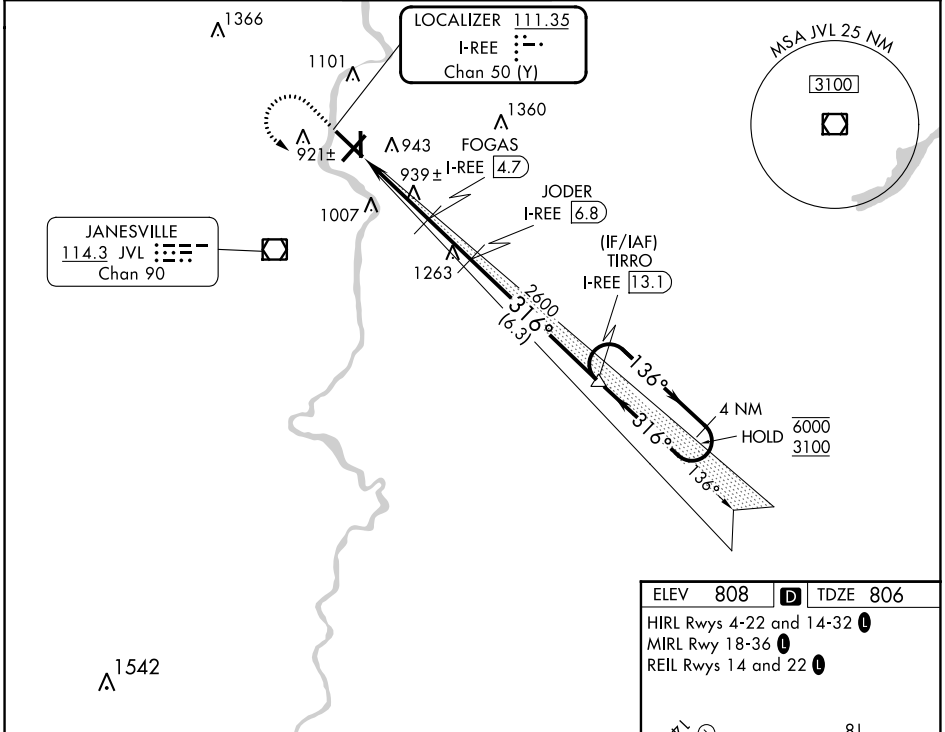
DME required. RNP APCH - GPS.

⚠ Circling Rwy 18 NA at night. When local altimeter setting not received, use Chicago/Rockford Intl altimeter setting and increase DA to 1075, increase all MDA 80 feet. Increase S-LOC 32 Cats C and D visibility $\frac{3}{8}$ SM, and Circling Cats C/D $\frac{1}{4}$ SM. VDP NA when using Chicago/Rockford Intl altimeter setting. For inop ALS when using Chicago/Rockford Intl altimeter setting, increase S-ILS 32 visibility all Cats to $\frac{3}{8}$ SM and S-LOC 32 visibility Cats C/D to $1\frac{3}{8}$ SM.



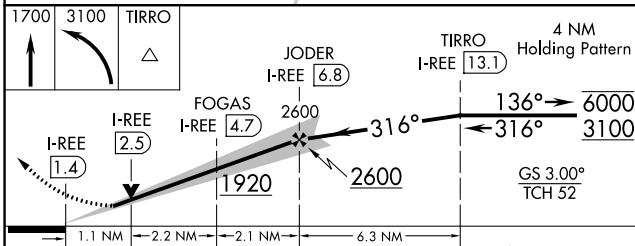
MISSED APPROACH: Climb to 1700 then climbing left turn to 3100 direct TIRRO and hold.

ATIS 128.25	ROCKFORD APP CON 121.0 327.0	JANESVILLE TOWER ★ 118.8 (CTAF) 0 225.4	GND CON 121.65	CLNC DEL 121.65	UNICOM 122.95
-----------------------	--	--	--------------------------	---------------------------	-------------------------



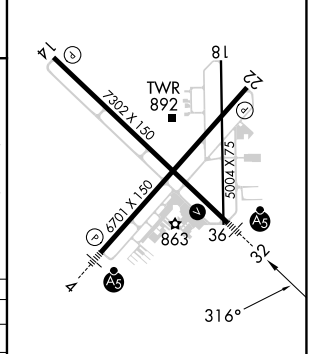
EC-3, 08 AUG 2024 to 05 SEP 2024

EC-3, 08 AUG 2024 to 05 SEP 2024



CATEGORY	A	B	C	D
S-ILS 32	1006- $\frac{1}{2}$ 200 (200- $\frac{1}{2}$)			
S-LOC 32	1200- $\frac{1}{2}$	394 (400- $\frac{1}{2}$)	1200- $\frac{3}{8}$	394 (400- $\frac{3}{8}$)
C CIRCLING	1260-1 452 (500-1)	1320-1 512 (600-1)	1420-1 $\frac{3}{4}$ 612 (700-1 $\frac{3}{4}$)	1460-2 652 (700-2)

ELEV 808	D TDZE 806
HIRL Rwy 4-22 and 14-32 L	
MIRL Rwy 18-36 L	
REIL Rwy 14 and 22 L	



FAF to MAP 5.4 NM					
Knots	60	90	120	150	180
Min:Seq	5:24	3:36	2:42	2:10	1:48