

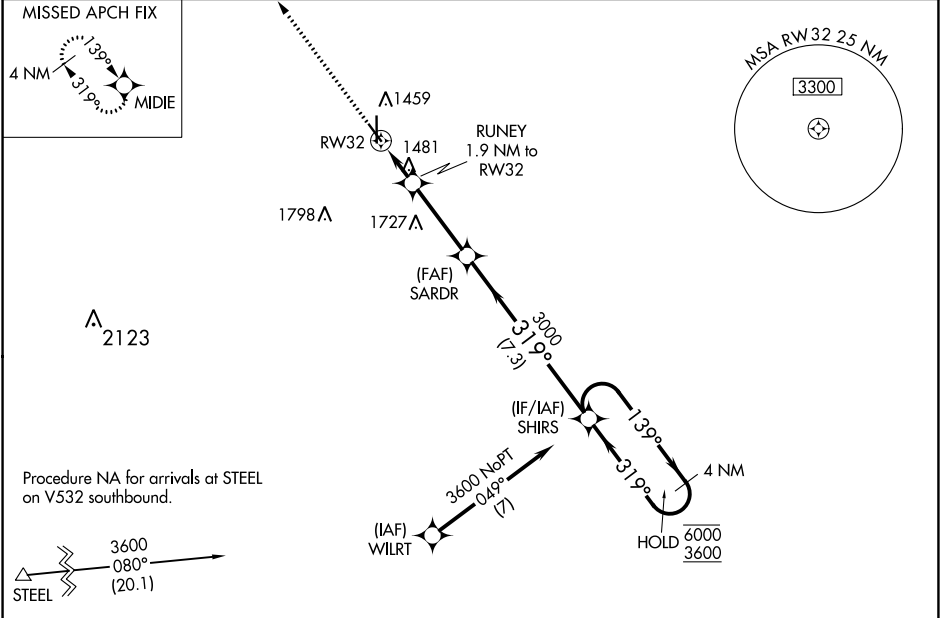
WAAS CH <b>58320</b> <b>W32A</b>	APP CRS <b>319°</b>	Rwy Idg TDZE Apt Elev	<b>4401</b> <b>1312</b> <b>1324</b>
--	------------------------	-----------------------------	---

# RNAV (GPS) RWY 32

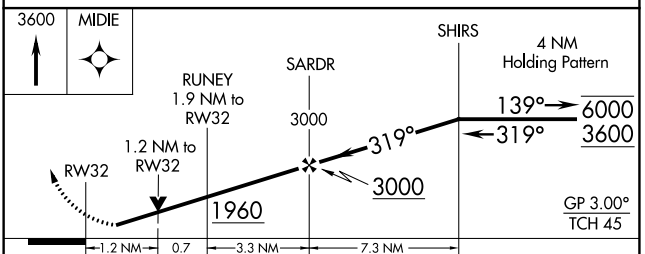
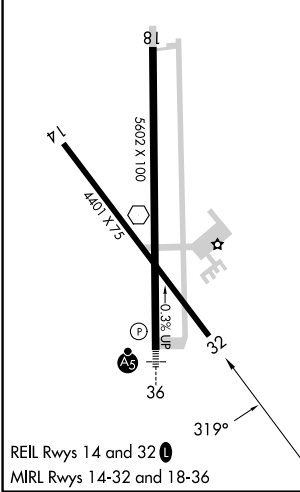
BEATRICE MUNI (BIE)

RNP APCH - GPS.	MISSED APPROACH: Climb to 3600 direct MIDIE and hold.
<p><b>▼</b> Rwy 32 helicopter visibility reduction below 3/4 SM NA.</p> <p><b>▲</b> For uncompensated Baro-VNAV systems, LNAV/VNAV NA below -17°C or above 54°C.</p>	

AWOS-3 <b>125.325</b>	MINNEAPOLIS CENTER <b>126.4 317.7</b>	UNICOM <b>122.8 (CTAF)</b>
--------------------------	--	-------------------------------



ELEV 1324	<b>D</b>	TDZE 1312
-----------	----------	-----------



CATEGORY	A	B	C	D
LPV DA		1562-1	250 (300-1)	
LNAV/VNAV DA		1685-1	373 (400-1)	
LNAV MDA	1740-1	428 (500-1)	1740-1¼	428 (500-1¼)
<b>C</b> CIRCLING	1820-1	496 (500-1)	2000-2 676 (700-2)	2100-2½ 776 (800-2½)

NC-2, 31 OCT 2024 to 28 NOV 2024

NC-2, 31 OCT 2024 to 28 NOV 2024