

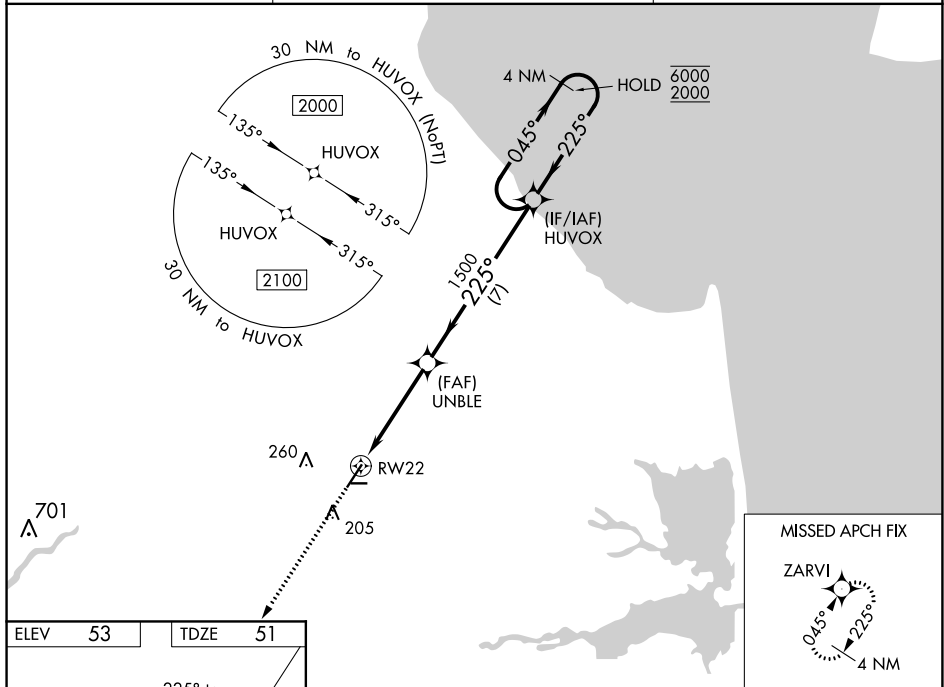
WAAS CH 60921 W22A	APP CRS 225°	Rwy Idg TDZE Apt Elev	5331 51 53
--	------------------------	-----------------------------	---------------------------------------

RNAV (GPS) RWY 22

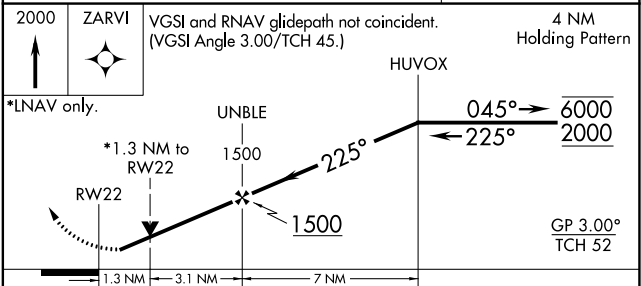
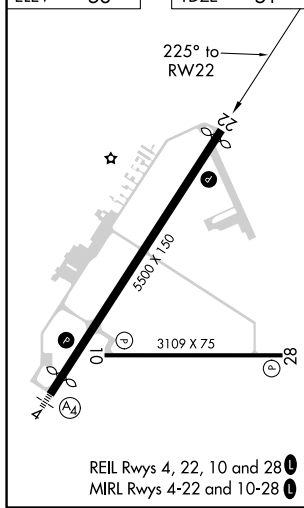
DELAWARE COASTAL (GED)

RNP APCH.		MISSED APPROACH: Climb to 2000 direct ZARVI and hold.
<p>▽ ▲ Rwy 22 helicopter visibility reduction below $\frac{3}{4}$ NA. For uncompensated Baro-VNAV systems, LNAV/VNAV NA below -11°C or above 54°C.</p>		

ASOS 118.375	DOVER APP CON 132.425 257.875	UNICOM 123.0 (CTAF) 0
------------------------	---	---------------------------------



ELEV 53	TDZE 51
---------	---------



CATEGORY	A	B	C	D
LPV DA		321- $\frac{7}{8}$	270 (300- $\frac{7}{8}$)	
LNAV/VNAV DA		446- $1\frac{1}{8}$	395 (400- $1\frac{1}{8}$)	
LNAV MDA	500-1	449 (500-1)	500- $1\frac{1}{8}$	449 (500- $1\frac{1}{8}$)
<input checked="" type="checkbox"/> CIRCLING	560-1 507 (600-1)	580-1 527 (600-1)	720- $1\frac{3}{4}$ 667 (700- $1\frac{3}{4}$)	720-2 667 (700-2)

NE-3, 25 MAR 2021 to 22 APR 2021

NE-3, 25 MAR 2021 to 22 APR 2021