

VIRGINIA BEACH, VIRGINIA

TACAN Y RWY 23L/R

TACAN NTU Chan 113	APCH CRS 244°	Rwy ldg 23L 12,001 23R 8000
		TDZE 23L 21 23R 20
		Arpt Elev 22

[USN]
OCEANA NAS (APOLLO SOUCEK FLD) (KNTU)

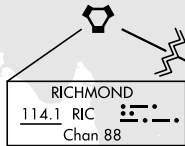
▲ * When ALS inop, increase CAT AB vis to 1 mile,
CAT CD vis to 1½ miles.



MISSED APPROACH: Climb to 3000 via R-064 to NTU TACAN and via R-223 to GRAIT and hold.

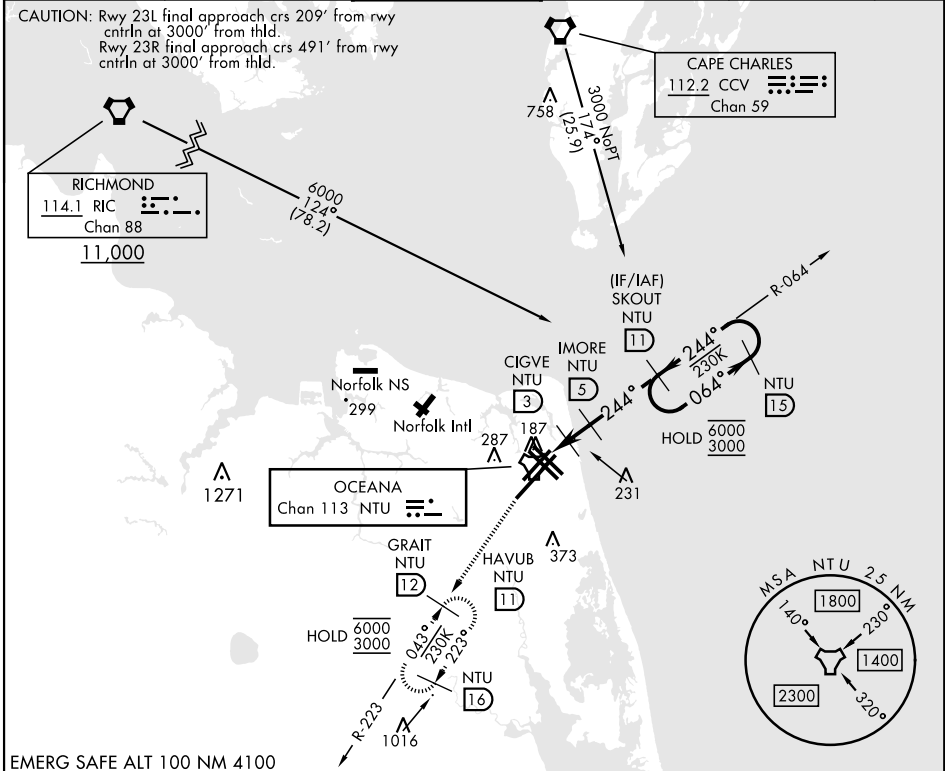
ATIS 317.6	APP/DEP CON 123.9 266.8	TOWER 127.075 360.2	GND CON 119.6 336.4	CLNC DEL 254.4	ASR/ PAR
---------------	----------------------------	------------------------	------------------------	-------------------	-------------

CAUTION: Rwy 23L final approach crs 209° from rwy ctrln at 3000' from thld.
Rwy 23R final approach crs 491° from rwy ctrln at 3000' from thld.



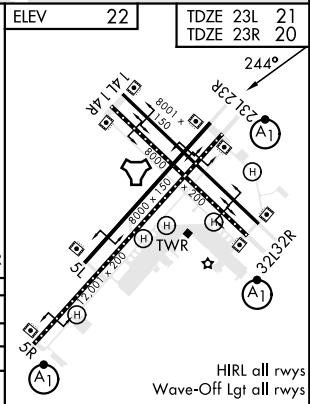
NE-3, 31 OCT 2024 to 28 NOV 2024

NE-3, 31 OCT 2024 to 28 NOV 2024



EMERG SAFE ALT 100 NM 4100

3000 ↑ NTU R-064	NTU	NTU R-223		
NTU TACAN	WENID NTU 1.3	NTU 1.3		
NTU 1.3	CIGVE NTU 3	IMORE NTU 5		
840	1600	1064		
0.5	1.7 NM	2 NM		
NTU 15	NTU 11	NTU 15		
6000	3000	3000		
3.39° TCH 55° Rwy 23L		3.38° TCH 55° Rwy 23R		
CATEGORY	A	B	C	D
S-23L *	440-½	419 (500-½)	440-¾	419 (500-¾)
S-23R	440-1	420 (500-1)	440-1⅛	420 (500-1⅛)
CIRCLING	500-1	478 (500-1)	600-1½ 578 (600-1½)	600-2 578 (600-2)



VIRGINIA BEACH, VIRGINIA
Orig 27JAN22

36° 49' N-76° 02' W

OCEANA NAS (APOLLO SOUCEK FLD) (KNTU)

TACAN Y RWY 23L/R

HIRL all rwys
Wave-Off Lgt all rwys