

VIRGINIA BEACH, VIRGINIA

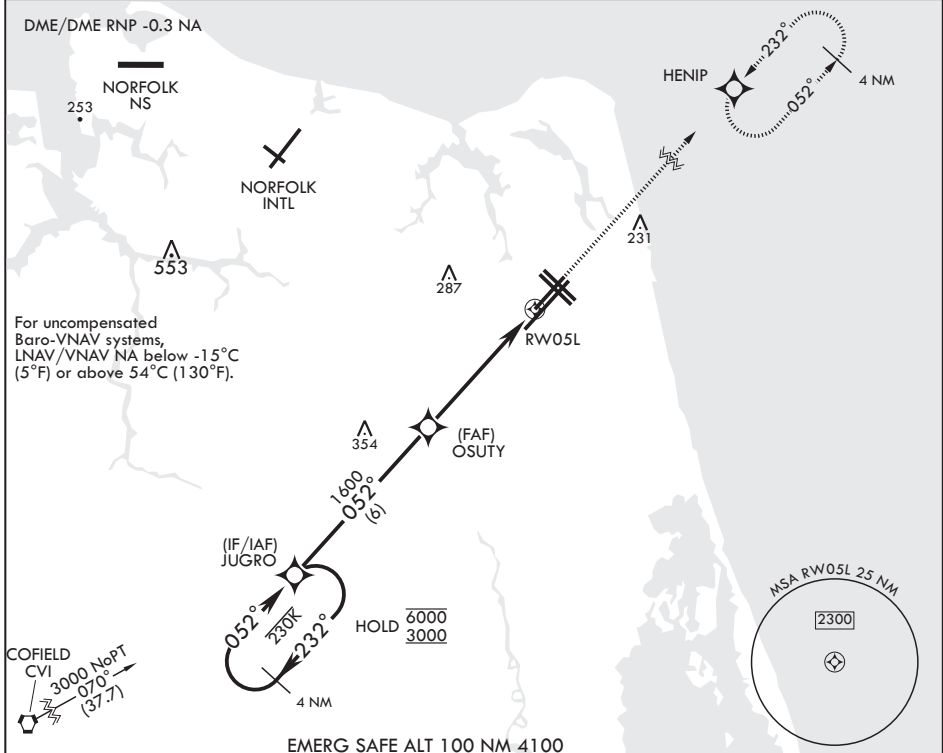
# RNAV (GPS) RWY 5L

WAAS CH <b>63997</b> W05A	APCH CRS <b>052°</b>	Rwy ldg TDZE Arprt Elev	<b>8000</b> <b>20</b> <b>22</b>
---------------------------------	-------------------------	-------------------------------	---------------------------------------

AL-934 (USN) OCEANA NAS (APOLLO SOUCEK FLD) (KNTU)

**▽** MISSED APPROACH: Climb to 3000 direct HENIP and hold. Continue climb in hold to 3000.

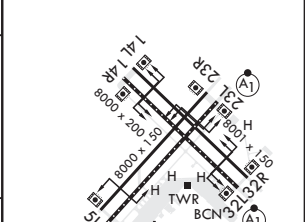
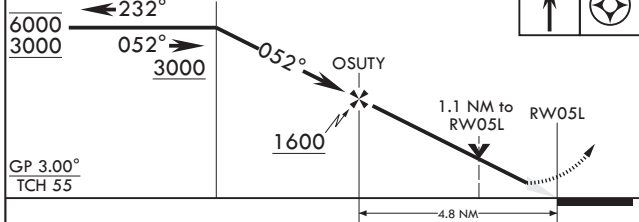
ATIS <b>317.6</b>	APP CON/DEP CON <b>123.9 266.8</b>	TOWER <b>127.075 360.2</b>	GND CON <b>119.6 336.4</b>	CLNC DEL <b>254.4</b>	ASR/PAR
----------------------	---------------------------------------	-------------------------------	-------------------------------	--------------------------	---------



NE-3, 31 OCT 2024 to 28 NOV 2024

NE-3, 31 OCT 2024 to 28 NOV 2024

EMERG SAFE ALT 100 NM 4100  
 4 NM Holding Pattern  
 JUGRO  
 RNAV TCH not coincident with PAR TCH (50ft).  
 3000 HENIP  
 ELEV 22  
 TDZE 20



CATEGORY	A	B	C	D
LPV DA	220- <sup>3</sup> / <sub>8</sub>		200	(200- <sup>3</sup> / <sub>8</sub> )
LNAV/VNAV DA	305- <sup>7</sup> / <sub>8</sub> 285 (300- <sup>7</sup> / <sub>8</sub> )	316- <sup>7</sup> / <sub>8</sub> 296 (300- <sup>7</sup> / <sub>8</sub> )	324- <sup>7</sup> / <sub>8</sub> 304 (400- <sup>7</sup> / <sub>8</sub> )	335- <sup>7</sup> / <sub>8</sub> 315 (400- <sup>7</sup> / <sub>8</sub> )
LNAV MDA	440-1	420 (500-1)	440-1 <sup>1</sup> / <sub>2</sub>	420 (500-1 <sup>1</sup> / <sub>2</sub> )
<b>C</b> CIRCLING	500-1	478 (500-1)	600-1 <sup>1</sup> / <sub>2</sub> 578 (600-1 <sup>1</sup> / <sub>2</sub> )	600-2 578 (600-2)

HIRL all Rws  
Wave-Off Lights all Rws

VIRGINIA BEACH, VIRGINIA  
Amdt 4 27JAN22

36°49'N - 76°02'W OCEANA NAS (APOLLO SOUCEK FLD) (KNTU)

# RNAV (GPS) RWY 5L