

RNAV (GPS) RWY 32L/R

AL-934 (USN) OCEANA NAS (APOLLO SOUCEK FLD) (KNTU)

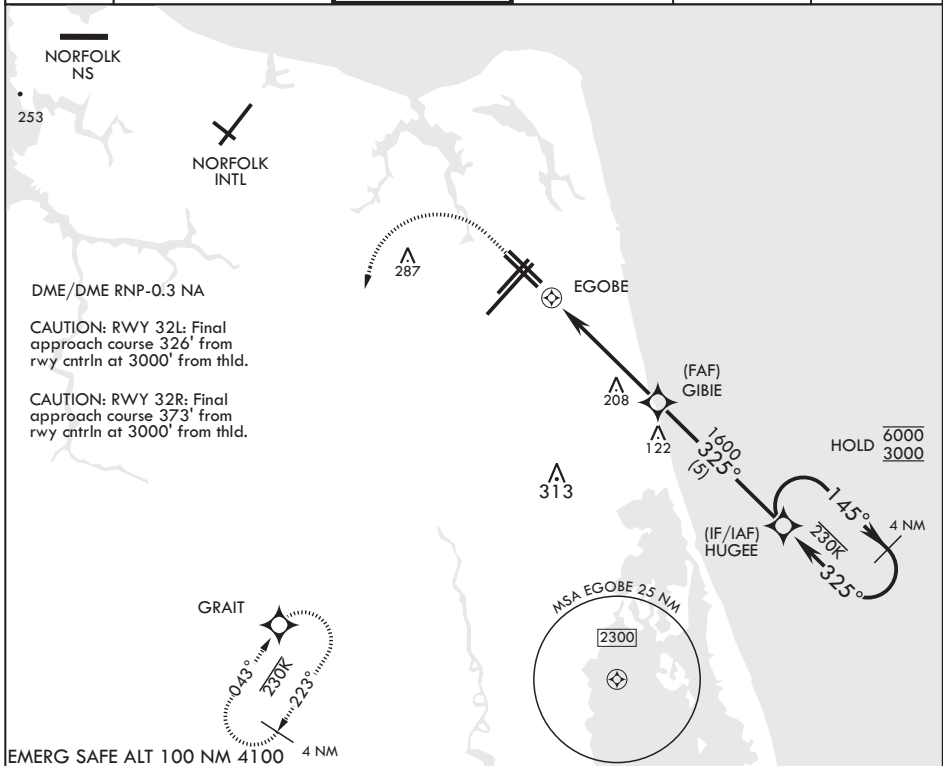
APCH CRS 325°	Rwy Idg 8000	32L 8001	32R 20
	TDZE 22		
	Arprt Elev 22		

▽ * When ALS inop increase CAT AB vis to 1 mile, CAT CD vis to 1 1/8 miles.

Rwy 32L
ALS-F-1

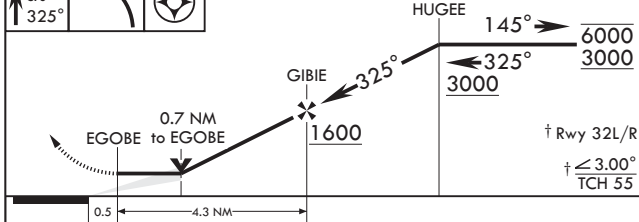
MISSED APPROACH: Climbing 1100 then climbing left turn to 3000 direct GRAIT and hold.

ATIS 317.6	APP CON/DEP CON 123.9 266.8	TOWER 127.075 360.2	GND CON 119.6 336.4	CLNC DEL 254.4	ASR/PAR
----------------------	---------------------------------------	-------------------------------	-------------------------------	--------------------------	---------

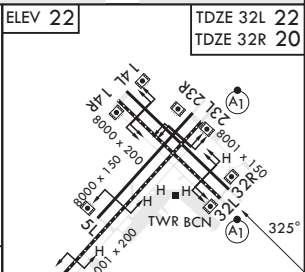


EMERG SAFE ALT 100 NM 4100 4 NM

1100 crs 325°	3000	GRAIT	RNAV TCH not coincident with PAR TCH (50ft).	4 NM Holding Pattern	ELEV 22	TDZE 32L 22 TDZE 32R 20
----------------------------	------	-------	--	----------------------	---------	----------------------------



CATEGORY	A		B		C		D	
LNAV MDA	460-1	440	(500-1)		460-1 $\frac{1}{4}$	440	(500-1 $\frac{1}{4}$)	
LNAV MDA*	460- $\frac{1}{2}$	438	(500- $\frac{1}{2}$)		460- $\frac{3}{4}$	438	(500- $\frac{3}{4}$)	
CIRCLING	500-1	478	(500-1)		600-1 $\frac{1}{2}$ 578 (600-1 $\frac{1}{2}$)		600-2 578 (600-2)	



HIRL all Rwys
Wave-Off Lights all Rwys

RNAV (GPS) RWY 32L/R

NE-3, 31 OCT 2024 to 28 NOV 2024

NE-3, 31 OCT 2024 to 28 NOV 2024