

VIRGINIA BEACH, VIRGINIA

RNAV (GPS) RWY 23L

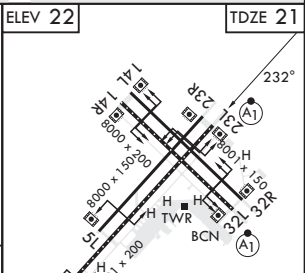
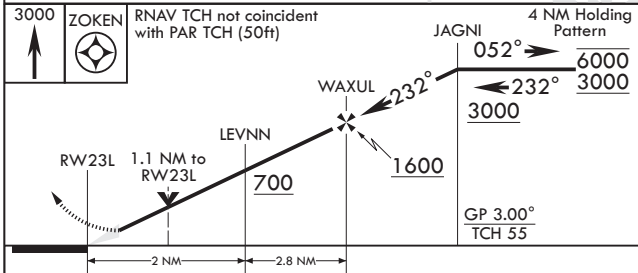
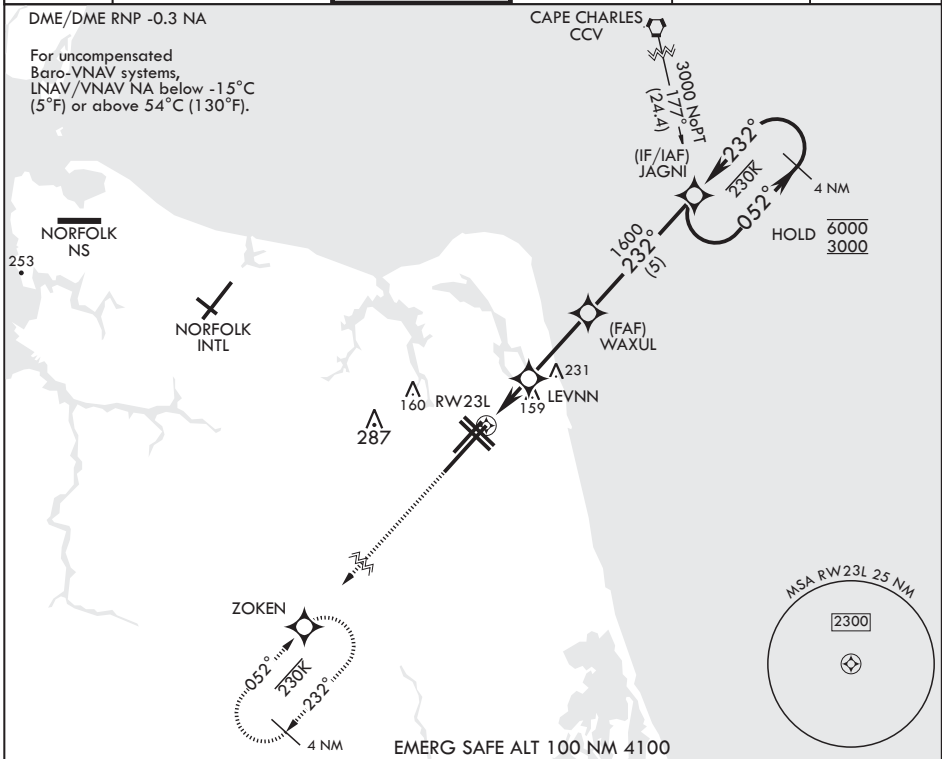
WAAS CH 67300 W23A	APCH CRS 232°	Rwy ldg TDZE 12,001 Arprt Elev 22
---------------------------------	-------------------------	--

AL-934 (USN) OCEANA NAS (APOLLO SOUCEK FLD) (KNTU)

V * When ALS inop, increase vis to 3/4 mile.
 ** When ALS inop, increase vis to 7/8 mile.
 *** When ALS inop, increase CAT AB vis to 1 mile; CAT CD vis to 1 1/8 miles.

ALSF-1 MISSED APPROACH: Climb to 3000 direct ZOKEN and hold.

ATIS 317.6	APP CON/DEP CON 123.9 266.8	TOWER 127.075 360.2	GND CON 119.6 336.4	CLNC DEL 254.4	ASR/PAR
----------------------	---------------------------------------	-------------------------------	-------------------------------	--------------------------	---------



CATEGORY	A	B	C	D
LPV DA*	221-1/2	200	(200-1/2)	
LNAV/VNAV DA**	324-1/2	303	(400-1/2)	
LNAV MDA***	420-1/2	399 (400-1/2)	420-5/8	399 (400-5/8)
CIRCLING	500-1	478 (500-1)	600-1 1/2	600-2
			578 (600-1 1/2)	578 (600-2)

HIRL all Rwys
Wave-Off Lights all Rwys

VIRGINIA BEACH, VIRGINIA
Amdt 4 27JAN22

36°49'N - 76°02'W OCEANA NAS (APOLLO SOUCEK FLD) (KNTU)

RNAV (GPS) RWY 23L

NE-3, 31 OCT 2024 to 28 NOV 2024

NE-3, 31 OCT 2024 to 28 NOV 2024