

HI-TACAN Z RWY 23L/R

[USN]

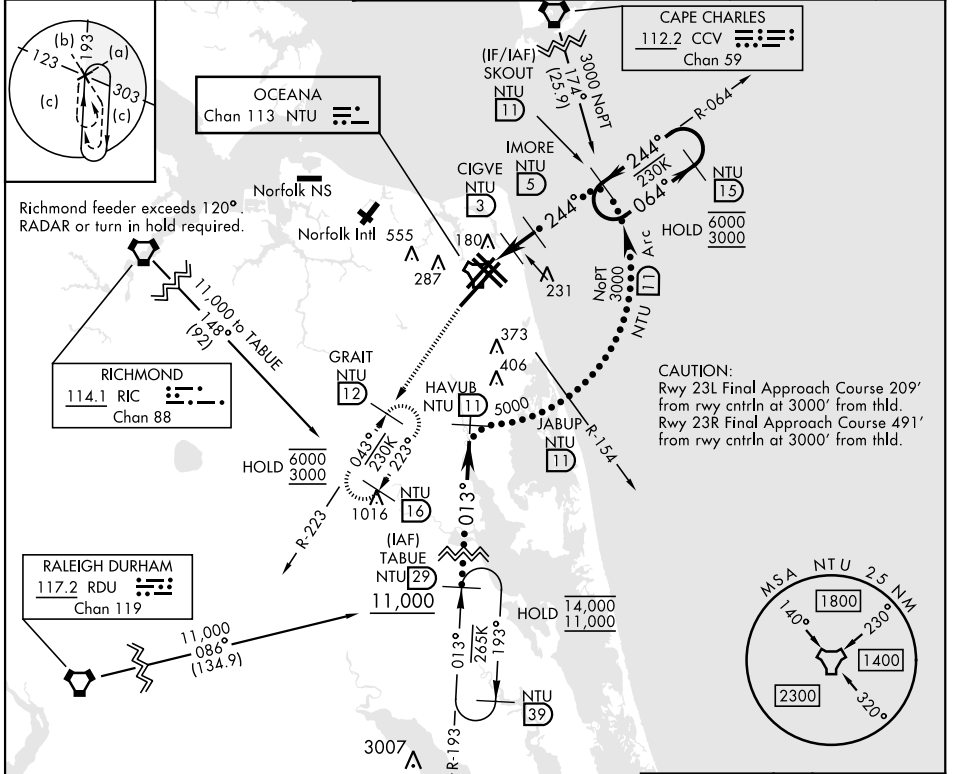
OCEANA NAS (APOLLO SOUCEK FLD) (KNTU)

TACAN NTU Chan 113	APCH CRS 244°	Rwy Idg 23L 12,001 23R 8000
		TDZE 23L 21 23R 20
		Arpt Elev 22

ALSF-1
 * When ALS inop, increase CAT CDE vis to 1½ miles

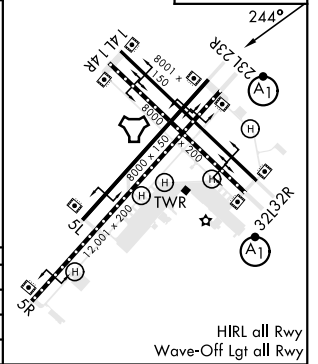
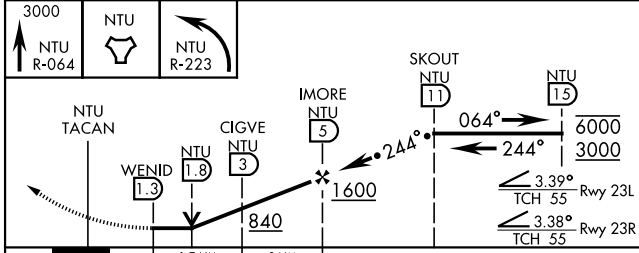
MISSED APPROACH: Climb to 3000 via R-064 to NTU TACAN, and via R-223 to GRAIT and hold.

ATIS 317.6	APP/DEP CON 123.9 266.8	TOWER 127.075 360.2	GND CON 119.6 336.4	CLNC DEL 254.4	ASR/ PAR
----------------------	-----------------------------------	-------------------------------	-------------------------------	--------------------------	-------------



EMERG SAFE ALT 100 NM 4100

ELEV 22	TDZE 23L 21
	TDZE 23R 20



CATEGORY	C	D	E
S-23L*	440-¾	419 (500-¾)	
S-23R	440-1½	420 (500-1½)	
CIRCLING	600-1½ 578 (600-1½)	600-2 578 (600-2)	900-3 878 (900-3)

HI-TACAN Z RWY 23L/R

NE-3, 31 OCT 2024 to 28 NOV 2024

NE-3, 31 OCT 2024 to 28 NOV 2024