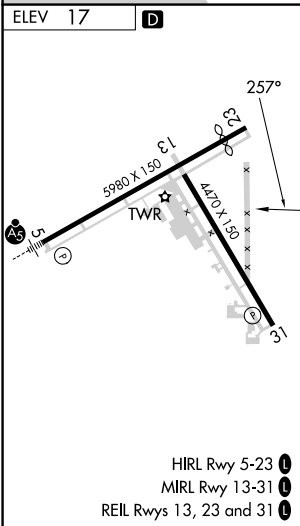
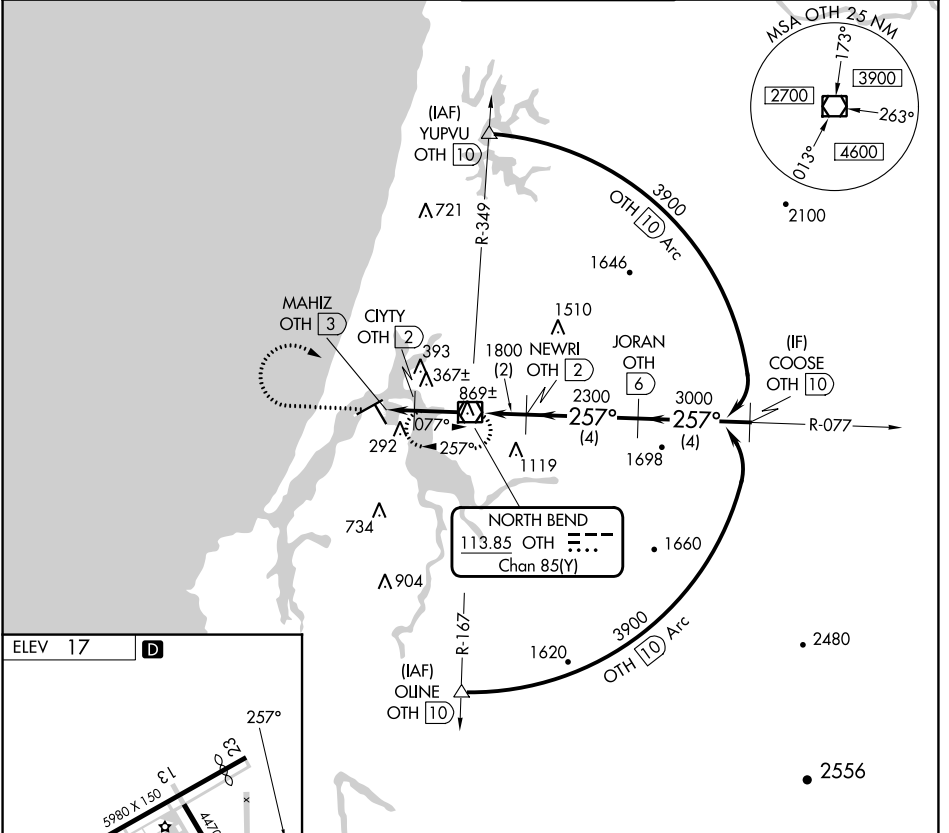


VOR/DME OTH <b>113.85</b> Chan <b>85(Y)</b>	APP CRS <b>257°</b>	Rwy Idg TDZE Apt Elev <b>17</b>	<b>N/A</b> <b>N/A</b> <b>17</b>
---------------------------------------------------	------------------------	------------------------------------------	---------------------------------------

**VOR-B**  
SOUTHWEST OREGON RGNL (OTH)

DME required.	MISSED APPROACH: Climb to 2300 then climbing right turn to 3600 direct OTH VOR/DME and hold.
<p>▼ Circling Rwy 13, 31 NA at night. ▲ Rwy 13, 31 helicopter visibility reduction below 1 SM NA.</p>	

AWOS-3PT <b>135.075</b>	SEATTLE CENTER <b>127.55 254.35</b>	NORTH BEND TOWER* <b>118.45 (CTAF) 0</b>	GND CON <b>127.1</b>
----------------------------	----------------------------------------	---------------------------------------------	-------------------------



	2300	3600	OTH				
	↑	↷					
				NEWRI OTH (2)	JORAN OTH (6)	COOSE OTH (10)	
				CIYTY OTH (2)			3900
				MAHIZ OTH (3)			3000
				1060	1800	2300	
	1 NM	2 NM	2 NM	4 NM	4 NM		
CATEGORY	A	B	C	D			
<b>CIRCLING</b>	700-1 683 (700-1)	820-1 803 (900-1)	1100-3 1083 (1100-3)	1180-3 1163 (1200-3)			

NW-1, 03 OCT 2024 to 31 OCT 2024

NW-1, 03 OCT 2024 to 31 OCT 2024