

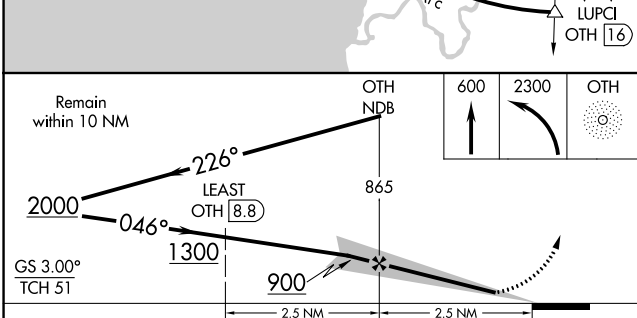
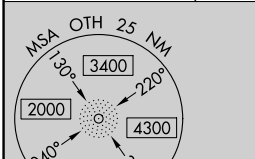
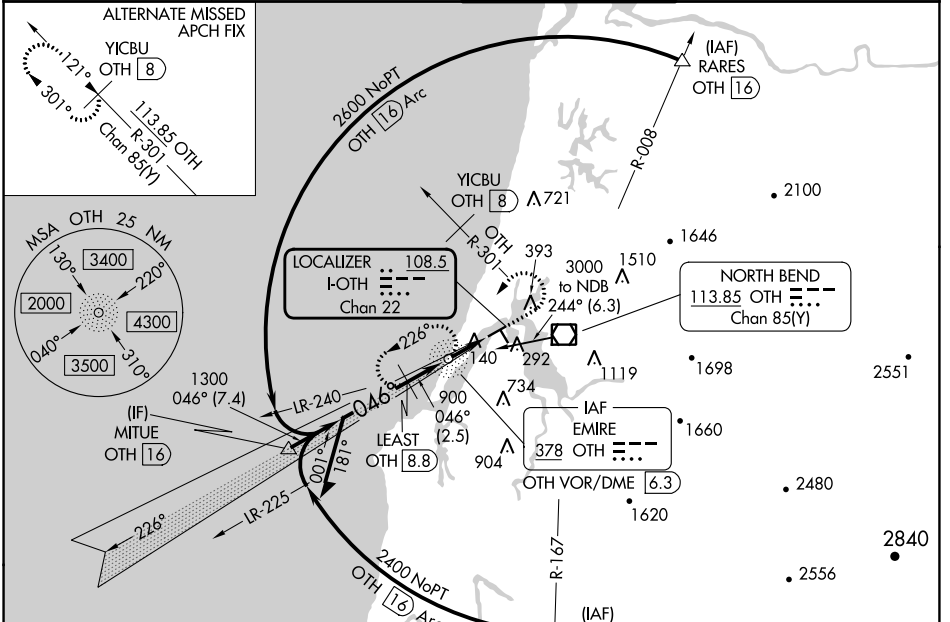
LOC/DME I-OTH <b>108.5</b> Chan <b>22</b>	APP CRS <b>046°</b>	Rwy Idg TDZE <b>16</b> Apt Elev <b>17</b>	<b>5320</b>
---	------------------------	---	-------------

# ILS or LOC RWY 5

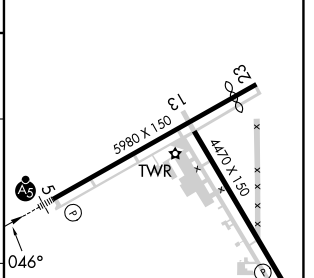
SOUTHWEST OREGON RGNL (OTH)

ADF and DME required.	MALSR	MISSED APPROACH: Climb to 600 then climbing left turn to 2300 direct OTH NDB and hold, continue climb-in-hold to 2300.
-----------------------	-------	--

AWOS-3PT <b>135.075</b>	SEATTLE CENTER <b>127.55 254.35</b>	NORTH BEND TOWER* <b>118.45 (CTAF)</b>	GND CON <b>127.1</b>
----------------------------	--	---	-------------------------



ELEV 17	TDZE 16
---------	---------



CATEGORY	A	B	C	D
S-ILS 5*		216-½	200 (200-½)	
S-ILS 5		278-½	262 (300-½)	
S-LOC 5	400-½	384 (400-½)	400-¾	384 (400-¾)
CIRCLING	680-1 663 (700-1)	820-1 803 (900-1)	NA	

HIRL Rwy 5-23	1
MIRL Rwy 13-31	1
REIL Rwy 13, 23 and 31	1
FAF to MAP 2.5 NM	
Knots	60 90 120 150 180
Min:Sec	2:30 1:40 1:15 1:00 0:50

NW-1, 03 OCT 2024 to 31 OCT 2024

NW-1, 03 OCT 2024 to 31 OCT 2024