

VORTAC CLL <b>113.3</b> Chan <b>80</b>	APP CRS <b>100°</b>	Rwy Idg TDZE Apt Elev	<b>5158</b> <b>319</b> <b>321</b>
--	------------------------	-----------------------------	---

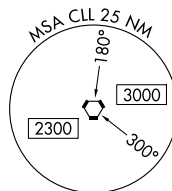
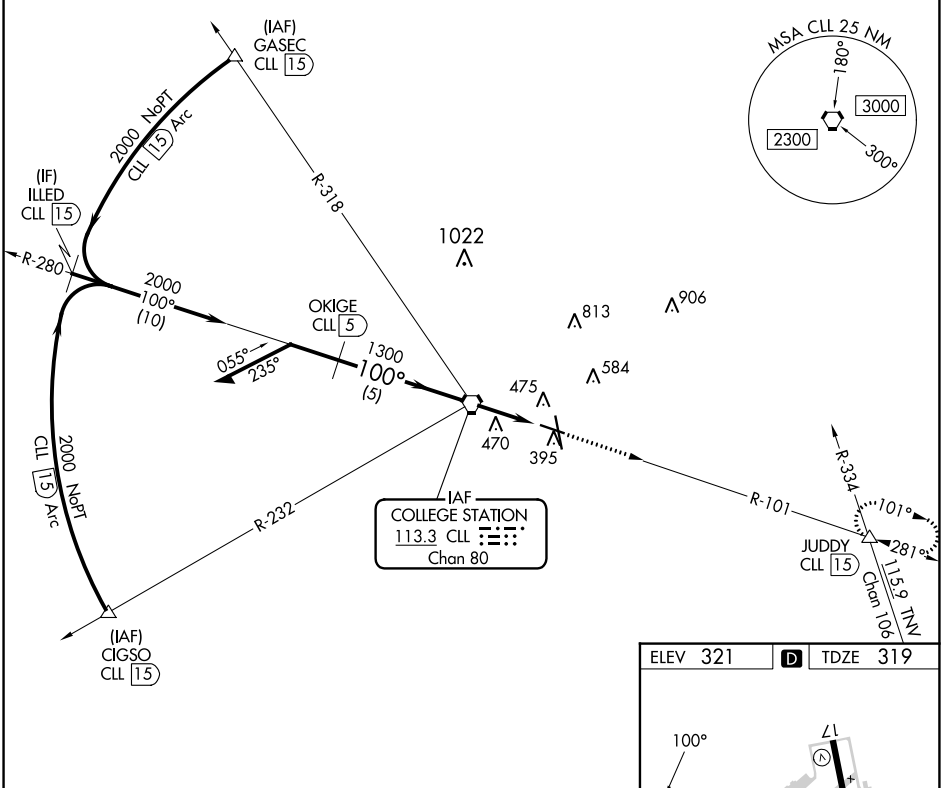
# VOR or TACAN Rwy 11

EASTERWOOD FLD (CLL)

DME required for procedure entry.  
 Procedure turn NA for Cat E.  
 Rwy 11 helicopter visibility reduction below 3/4 SM NA.

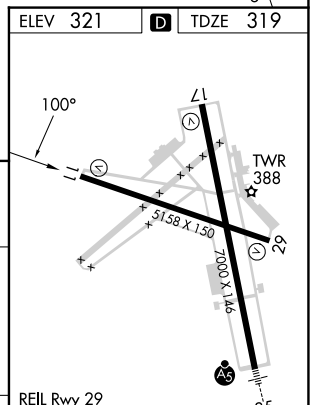
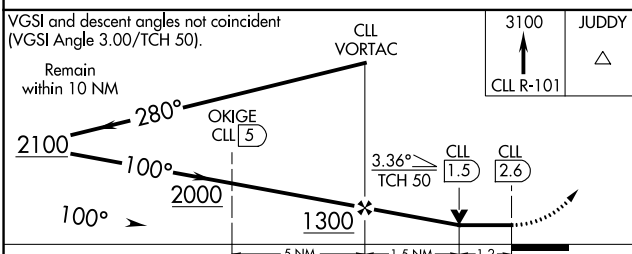
MISSED APPROACH: Climb to 3100 on CLL VORTAC  
 R-101 to JUDDY INT/CLL 1.5 DME and hold.

ATIS <b>126.85</b>	HOUSTON APP CON <b>134.3 360.85</b>	EASTERWOOD TOWER ★ <b>118.5 (CTAF) 284.7</b>	GND CON <b>128.7 284.7</b>	CLNC DEL <b>128.7</b>	CLNC DEL <b>120.4</b> (when twr closed)	UNICOM <b>122.95</b>
-----------------------	--	---	-------------------------------	--------------------------	---	-------------------------



SC-5, 31 OCT 2024 to 28 NOV 2024

SC-5, 31 OCT 2024 to 28 NOV 2024



CATEGORY	A	B	C	D	E
	S-11	740-1 421 (500-1)	740-1¼ 421 (500-1¼)		
CIRCLING	860-1 539 (600-1)	880-1 559 (600-1)	1000-2 679 (700-2)	1180-2¾ 859 (900-2¾)	1180-3 859 (900-3)

ELEV 321	TDZE 319
FAF to MAP 2.6 NM	
Knots	60 90 120 150 180
Min:Sec	2:36 1:44 1:18 1:02 0:52