

VOR/DME LRP 117.3 Chan 120	APP CRS 319°	Rwy Idg 4102 TDZE 403 Apt Elev 403
--	------------------------	---

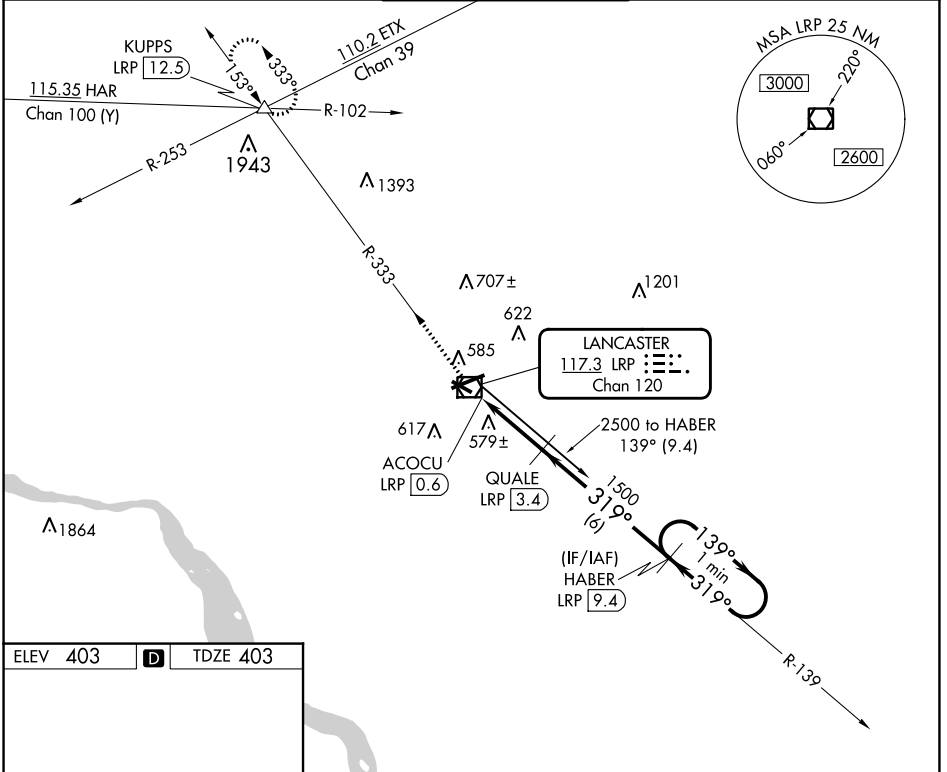
VOR/DME RWY 31

LANCASTER (LNS)

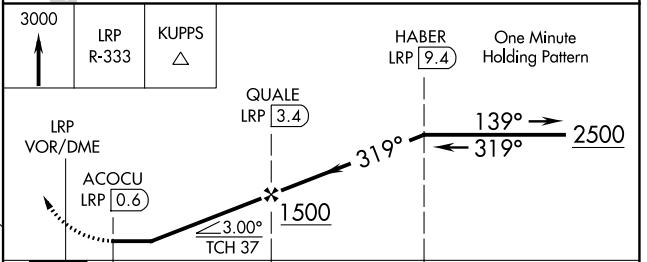
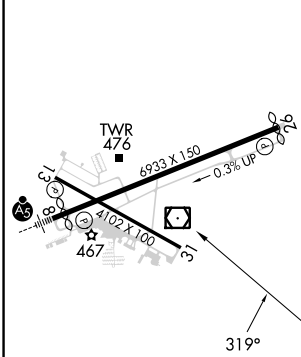
⚠ Night landing: Rwy 13, 31 NA. Helicopter visibility reduction below 1 SM NA.
⚠ When local altimeter setting not received, use Harrisburg Intl altimeter setting and increase all MDA 80 feet, increase Cat C/D visibility ¼ mile.

MISSED APPROACH: Climb to 3000 via LRP VOR/DME R-333 to KUPPS INT/LRP 12.5 DME and hold.

ATIS 125.675	HARRISBURG APP CON 126.45 281.525	LANCASTER TOWER★ 120.9 (CTAF) 251.1	GND CON 121.8	UNICOM 122.95
------------------------	---	---	-------------------------	-------------------------



ELEV 403	D	TDZE 403
-----------------	----------	-----------------



CATEGORY	A	B	C	D
S-31	840-1	437 (500-1)	840-1¼ 437 (500-1¼)	840-1½ 437 (500-1½)
CIRCLING	940-1	537 (600-1)	960-1½ 557 (600-1½)	1080-2¼ 677 (700-2¼)

- REIL Rwy 31
- HIRL Rwy 8-26
- MIRL Rwy 13-31

NE-4, 11 JUL 2024 to 08 AUG 2024

NE-4, 11 JUL 2024 to 08 AUG 2024