

WAAS CH 42723 W13A	APP CRS 128°	Rwy Idg TDZE Apt Elev	4102 402 403
--	------------------------	-----------------------------	---

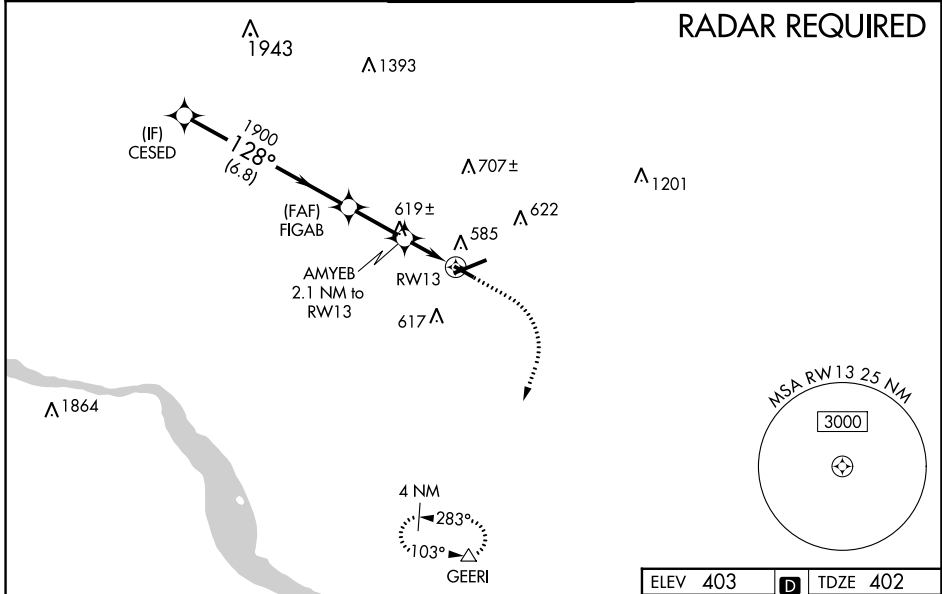
RNAV (GPS) RWY 13

LANCASTER (LNS)

⚠ Night landing: Rwy 13, 31 NA. Baro-VNAV NA when using Harrisburg Intl altimeter setting. For uncompensated Baro-VNAV systems, LNAV/VNAV NA below -15°C (5°F) or above 31°C (87°F). DME/DME RNP-0.3 NA. Helicopter visibility reduction below 1 SM NA. When local altimeter setting not received, use Harrisburg Intl altimeter setting and increase all DA 64 feet and all MDA 80 feet, increase LPV and LNAV/VNAV visibility all Cats 1/8, and LNAV and Circling Cats C and D 1/4.

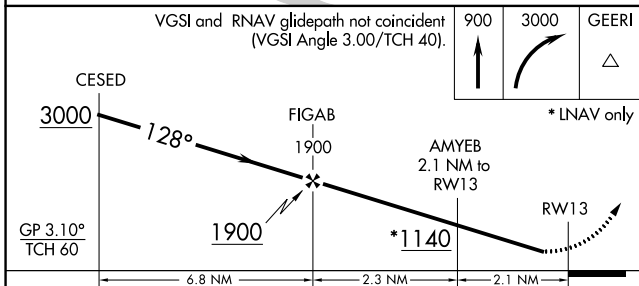
MISSED APPROACH:
Climb to 900 then climbing right turn to 3000 direct GEERI and hold

ATIS 125.675	HARRISBURG APP CON 126.45 281.525	LANCASTER TOWER * 120.9 (CTAF) 251.1	GND CON 121.8	UNICOM 122.95
------------------------	---	---	-------------------------	-------------------------



NE-4, 31 OCT 2024 to 28 NOV 2024

NE-4, 31 OCT 2024 to 28 NOV 2024



ELEV 403	D	TDZE 402
----------	----------	----------

CATEGORY	A	B	C	D
LPV DA		687-1	285 (300-1)	
LNAV/VNAV DA		894-1 1/8	492 (500-1 1/8)	
LNAV MDA	880-1 478 (500-1)		880-1 3/8 478 (500-1 3/8)	
CIRCLING	940-1 537 (600-1)		960-1 1/2 557 (600-1 1/2)	1060-2 657 (700-2)

