
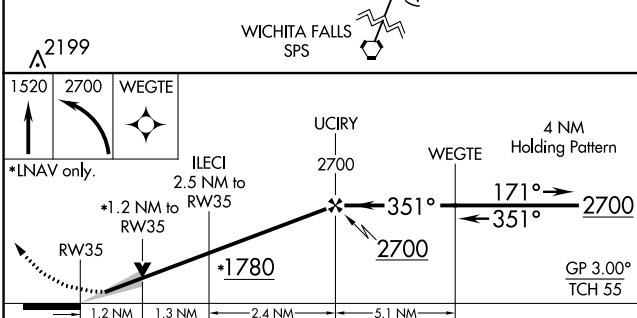
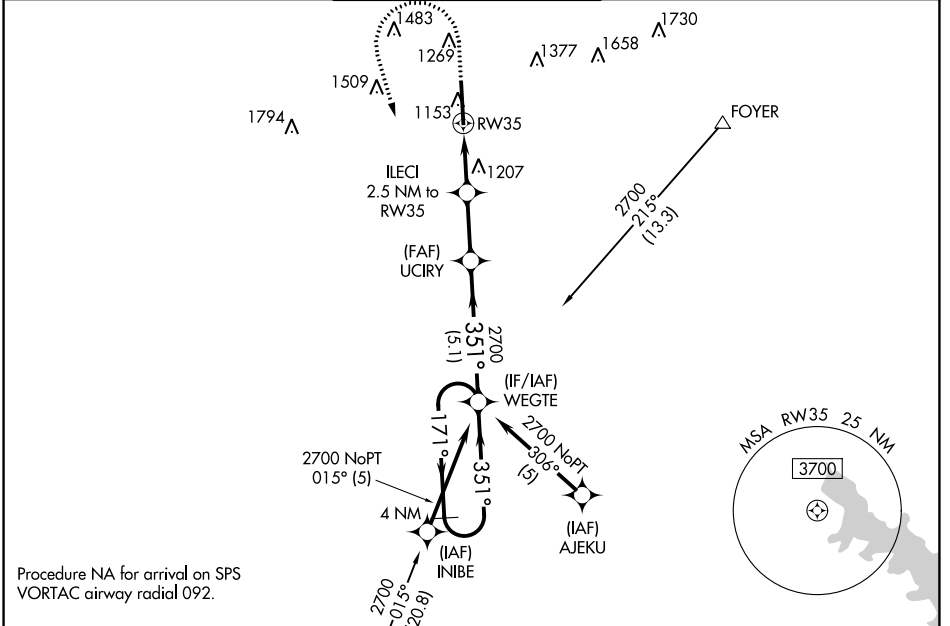


WAAS CH <b>77640</b> <b>W35A</b>	APP CRS <b>351°</b>	Rwy Idg TDZE Apt Elev	<b>8599</b> <b>1089</b> <b>1110</b>
--	------------------------	-----------------------------	---

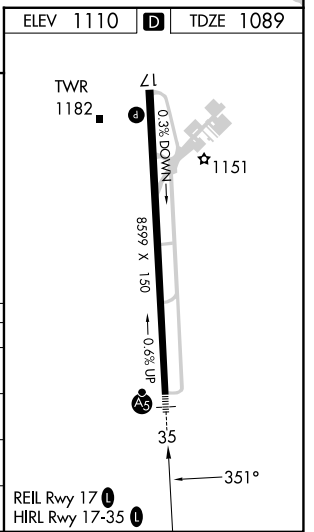
# RNAV (GPS) RWY 35

LAWTON-FORT SILL RGNL (LAW)

RNP APCH.		LAWTON TOWER * <b>119.9 (CTAF) 0 257.8</b>		GND CON <b>121.9</b>	UNICOM <b>122.95</b>
<p>▼ For uncompensated Baro-VNAV systems, LNAV/VNAV NA below -11°C or above 54°C. For inop ALS, increase LNAV/VNAV all ASR ▲ Cats visibility to 7/8 SM.</p>		<p>MALSR  </p>		<p>MISSED APPROACH: (Do not exceed 200K until WEGTE) Climb to 1520 then climbing left turn to 2700 direct WEGTE and hold.</p>	
ATIS <b>120.75</b>	FORT SILL APP CON <b>120.55 322.4</b>				



CATEGORY	A	B	C	D
LPV DA		1289-1/2	200 (200-1/2)	
LNAV/VNAV DA		1376-1/2	287 (300-1/2)	
LNAV MDA	1520-1/2	431 (500-1/2)	1520-3/4	431 (500-3/4)
<b>C</b> CIRCLING	1620-1	510 (600-1)	1820-2 710 (800-2)	1820-2 1/4 710 (800-2 1/4)



SC-1, 03 OCT 2024 to 31 OCT 2024

SC-1, 03 OCT 2024 to 31 OCT 2024