

LOC I-LAW <b>109.1</b>	APP CRS <b>351°</b>	Rwy Idg <b>8599</b>	TDZE <b>1089</b>	Apt Elev <b>1110</b>
---------------------------	------------------------	------------------------	---------------------	-------------------------

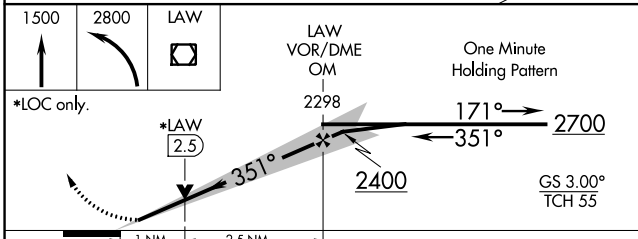
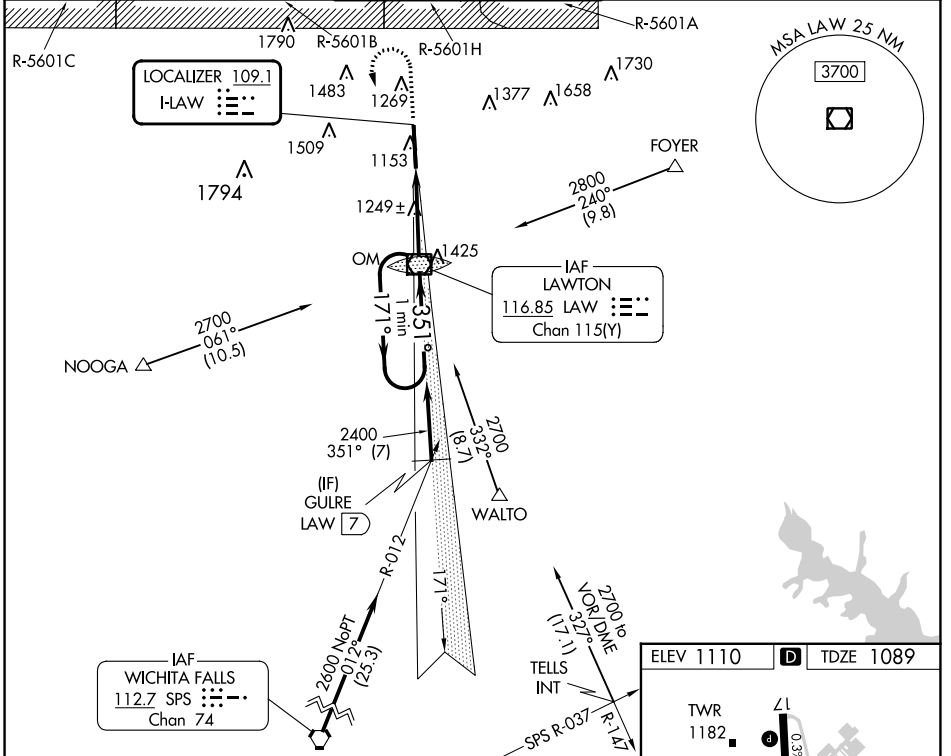
# ILS or LOC RWY 35

LAWTON-FORT SILL RGNL (LAW)

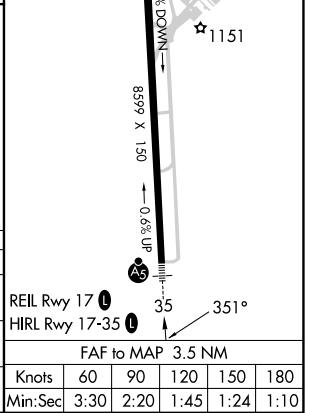
**ASR** Autopilot coupled approach NA below 2000. For inop ALS, increase S-LOC 35 Cat C/D visibility to 1 1/8 SM

**MALS** MISSED APPROACH: Climb to 1500 then climbing left turn to 2800 direct LAW VOR/DME and hold, continue climb-in-hold to 2800.

ATIS <b>120.75</b>	FORT SILL APP CON <b>120.55 322.4</b>	LAWTON TOWER * <b>119.9(CTAF) 257.8</b>	GND CON <b>121.9</b>	UNICOM <b>122.95</b>
-----------------------	--	--	-------------------------	-------------------------



ELEV 1110	TDZE 1089
-----------	-----------



CATEGORY	A	B	C	D
S-ILS 35	1289-1/2		200 (200-1/2)	
S-LOC 35	1500-1/2	411 (400-1/2)	1500-3/4	411 (400-3/4)
<b>C</b> CIRCLING	1620-1	510 (600-1)	1820-2	1820-2 1/4
			710 (800-2)	710 (800-2 1/4)

FAF to MAP 3.5 NM					
Knots	60	90	120	150	180
Min:Sec	3:30	2:20	1:45	1:24	1:10

SC-1, 03 OCT 2024 to 31 OCT 2024

SC-1, 03 OCT 2024 to 31 OCT 2024