

WAAS CH <b>62807</b> <b>W36A</b>	APP CRS <b>357°</b>	Rwy Idg TDZE <b>1048</b> Apt Elev <b>1077</b>
--	------------------------	---


# RNAV (GPS) RWY 36

DUBUQUE RGNL (DBQ)

**RNP APCH.**

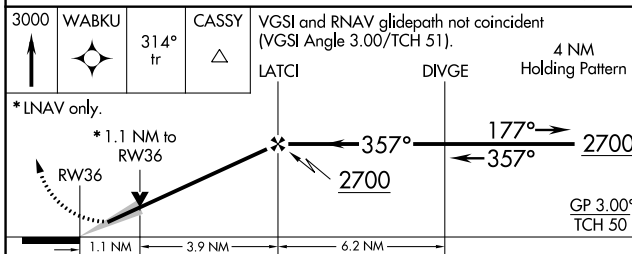
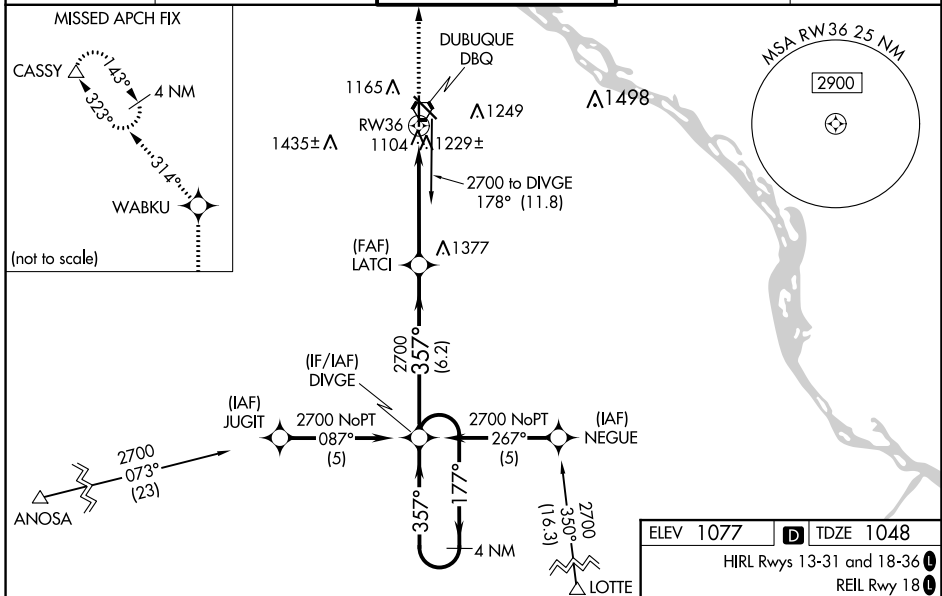
**⚠** For uncompensated Baro-VNAV systems, LNAV/VNAV NA below -17°C or above 46°C. Baro-VNAV and VDP NA when using Monticello altimeter setting. When local altimeter setting not received, use Monticello altimeter setting and increase all DA 88 feet and all MDA 100 feet, increase LNAV/VNAV all Cats, LNAV Cats C and D and Circling Cat C visibility ¼ mile. For inop MALSAR when using Monticello altimeter setting, increase LPV all Cats visibility to RVR 5000.  
# RVR 1800 authorized with use of FD or AP or HUD to DA, NA when using Monticello altimeter setting.

**MALSAR**

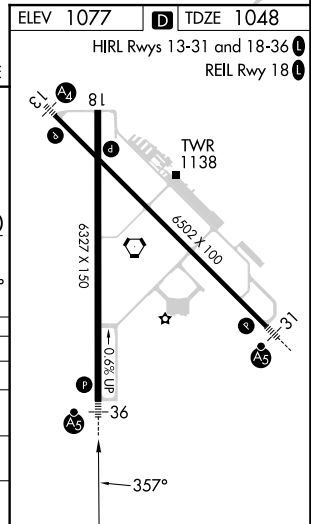


**MISSED APPROACH:**  
Climb to 3000 direct WABKU and via 314° track to CASSY and hold.

ATIS <b>127.25</b>	CHICAGO CENTER <b>133.95 281.4</b>	<b>DUBUQUE TOWER *</b> <b>119.5 (CTAF) 0 254.4</b>	GND CON <b>121.8</b>	UNICOM <b>122.95</b>
-----------------------	---------------------------------------	---	-------------------------	-------------------------



CATEGORY	A	B	C	D
LPV DA#		1248/24	200 (200-½)	
LNAV/VNAV DA		1525/60	477 (500-1¼)	
LNAV MDA	1480/24	432 (500-½)	1480/40 432 (500-¾)	1480/50 432 (500-1)
<b>C</b> CIRCLING	1580-1	503 (600-1)	1600-1½ 523 (600-1½)	1800-2¼ 723 (800-2¼)



NC-3, 05 SEP 2024 to 03 OCT 2024

NC-3, 05 SEP 2024 to 03 OCT 2024