

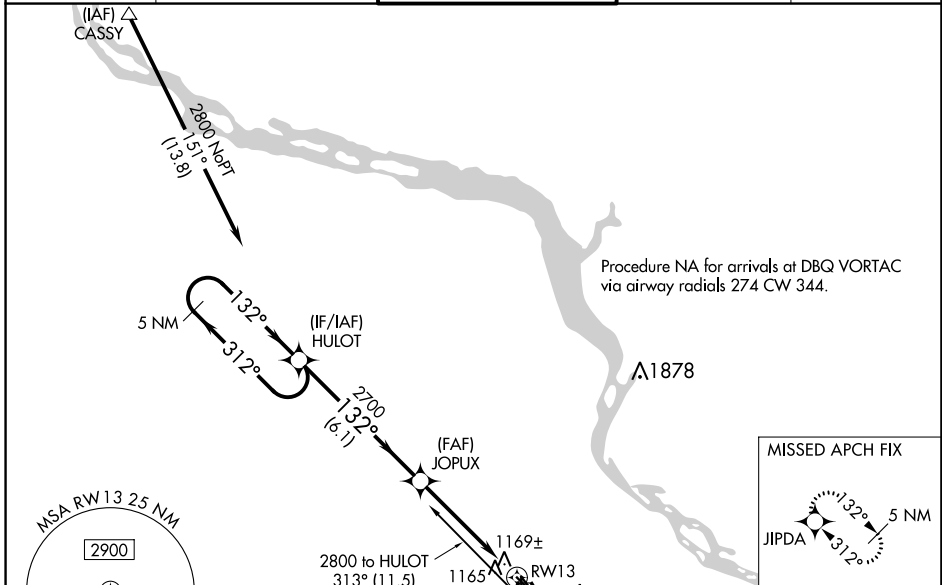
WAAS CH 93700 W13A	APP CRS 132°	Rwy Idg TDZE Apt Elev	6502 1077 1077
--	------------------------	-----------------------------	---

RNAV (GPS) RWY 13

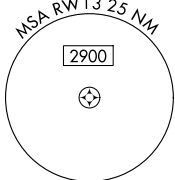
DUBUQUE RGNL (DBQ)

RNP APCH.	MALS	MISSED APPROACH: Climb to 3100 direct JIPDA and hold.
<p>⚠ Inop table does not apply to LPV and LNAV/VNAV. Baro-VNAV NA when using Monticello altimeter setting. For uncompensated Baro-VNAV systems, LNAV/VNAV NA below -17°C or above 46°C. VDP NA when using Monticello altimeter setting. If local altimeter setting not received, use Monticello altimeter setting and increase all DAs/MDAs 100 feet.</p>		

ATIS 127.25	CHICAGO CENTER 133.95 281.4	DUBUQUE TOWER ★ 119.5 (CTAF) 0 254.4	GND CON 121.8	UNICOM 122.95
-----------------------	---------------------------------------	--	-------------------------	-------------------------



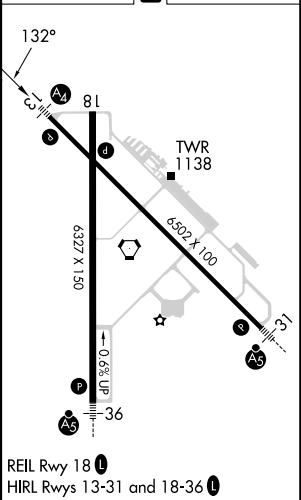
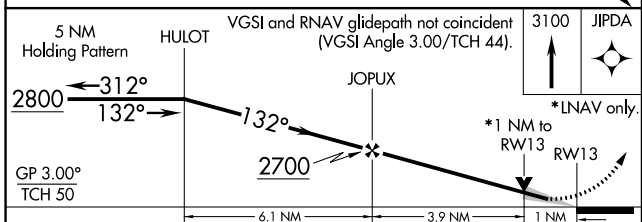
Procedure NA for arrivals at DBQ VORTAC via airway radials 274 CW 344.



MISSED APCH FIX



ELEV 1077	D TDZE 1077
-----------	--------------------



CATEGORY	A	B	C	D
LPV DA	1393-1 316 (400-1)			
LNAV/VNAV DA	1574-1¾ 497 (500-1¾)			
LNAV MDA	1440-¾ 363 (400-¾)		1440-1¼ 363 (400-1¼)	
C CIRCLING	1580-1¾ 503 (600-1¾)		1600-1¾ 523 (600-1¾)	
			1800-2¼ 723 (800-2¼)	

NC-3, 31 OCT 2024 to 28 NOV 2024

NC-3, 31 OCT 2024 to 28 NOV 2024