

TACAN RWY 17L

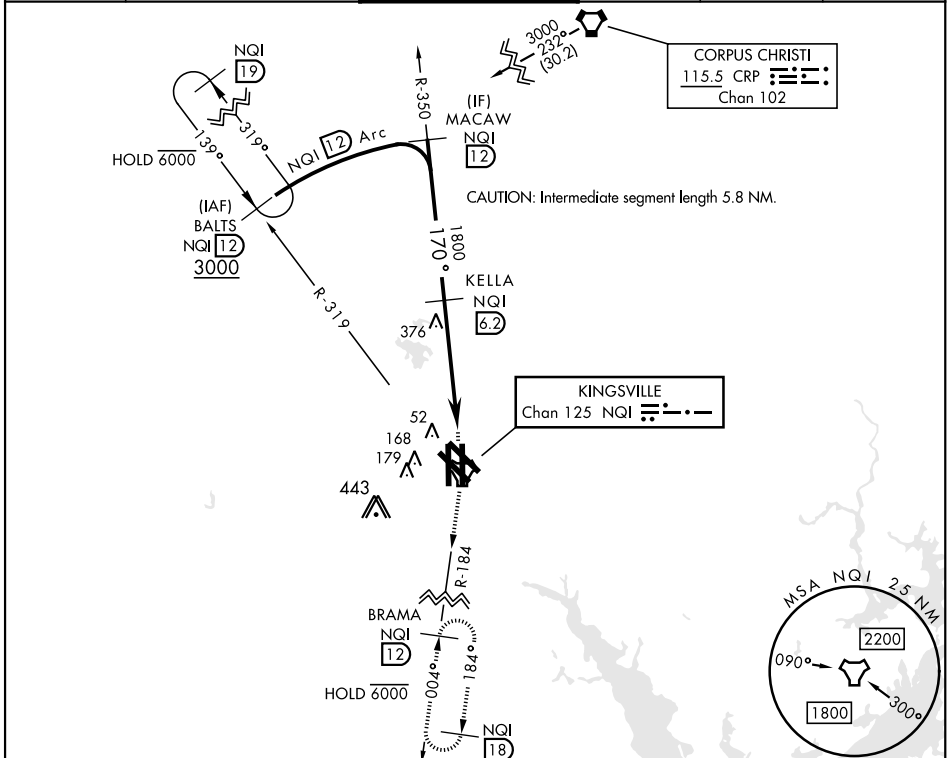
TACAN NQI Chan 125	APCH CRS 170°	Rwy Ldg TDZE Arprt Elev	8001 49 50
------------------------------	-------------------------	----------------------------	---------------------------------------

AL-918 [USN]

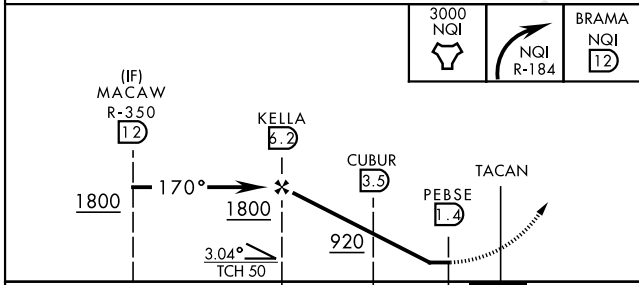
KINGSVILLE NAS (KNQI)

MISSED APPROACH: Climb to 3000 direct NQI TACAN and climbing right turn to intercept NQI R-184 to BRAMA and hold.

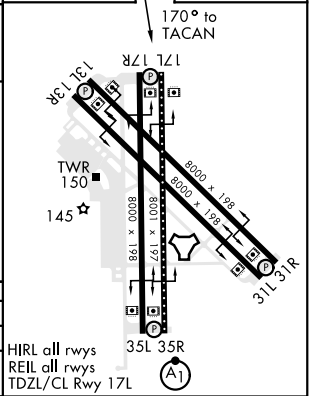
ATIS ★ 282.25	APP CON 119.9 290.45	TOWER ★ 124.1 377.05	GND CON 239.05	CLNC DEL 328.4	ASR/PAR
-------------------------	--------------------------------	--------------------------------	--------------------------	--------------------------	---------



EMERG SAFE ALT 100 NM 16,200



ELEV 50	TDZE 49
---------	---------



CATEGORY	A	B	C	D
S-17L		360-1	311 (400-1)	
CIRCLING	540-1	490 (500-1)	760-2 710 (800-2)	760-2 1/4 710 (800-2 1/4)

HIRL all rwys
REIL all rwys
TDZL/CL Rwy 17L

TACAN RWY 17L

SC-3, 31 OCT 2024 to 28 NOV 2024

SC-3, 31 OCT 2024 to 28 NOV 2024