

# KINGSVILLE-THREE DEPARTURE (NQI3•NQI)

KINGSVILLE NAS (KNQI)

AL-918 [USN]

KINGSVILLE, TEXAS

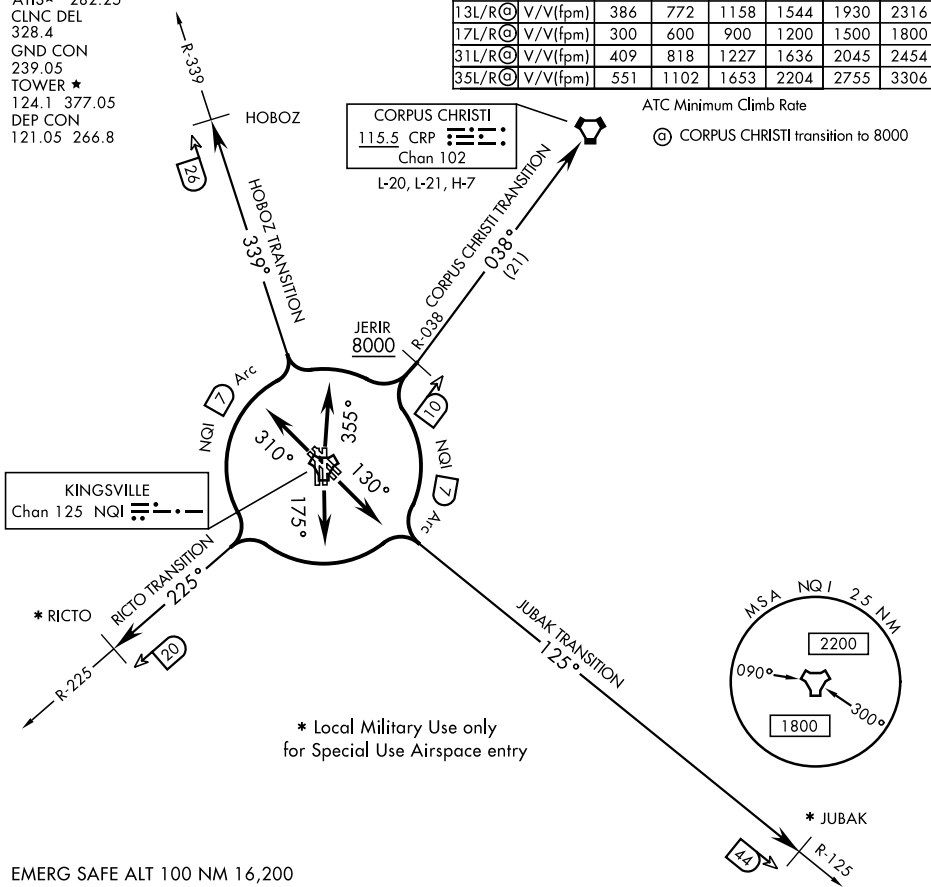
ATIS★ 282.25  
 CLNC DEL  
 328.4  
 GND CON  
 239.05  
 TOWER ★  
 124.1 377.05  
 DEP CON  
 121.05 266.8

| Rwy    | Knots    | 60  | 120  | 180  | 240  | 300  | 360  |
|--------|----------|-----|------|------|------|------|------|
| 13L/RⓄ | V/V(fpm) | 386 | 772  | 1158 | 1544 | 1930 | 2316 |
| 17L/RⓄ | V/V(fpm) | 300 | 600  | 900  | 1200 | 1500 | 1800 |
| 31L/RⓄ | V/V(fpm) | 409 | 818  | 1227 | 1636 | 2045 | 2454 |
| 35L/RⓄ | V/V(fpm) | 551 | 1102 | 1653 | 2204 | 2755 | 3306 |

ATC Minimum Climb Rate

Ⓞ CORPUS CHRISTI transition to 8000

**CORPUS CHRISTI**  
 115.5 CRP   
 Chan 102  
 L-20, L-21, H-7



EMERG SAFE ALT 100 NM 16,200

## DEPARTURE ROUTE DESCRIPTION

TAKE-OFF RWY 13L/R: Climb via heading 130° to join NQI TACAN 7 DME arc, thence....

TAKE-OFF RWY 17L/R: Climb via heading 175° to join NQI TACAN 7 DME arc, thence....

TAKE-OFF RWY 31L/R: Climb via heading 310° to join NQI TACAN 7 DME arc, thence....

TAKE-OFF RWY 35L/R: Climb via heading 355° to join NQI TACAN 7 DME arc, thence....

### CORPUS CHRISTI TRANSITION (NQI3•CRP):

Rwys 13L/R and 17L/R: Turn left to intercept NQI 7 DME arc and arc NE. Turn right to intercept NQI R-038 to cross JERIR at or above 8000. Then on NQI R-038 to CRP VORTAC.

Rwys 31L/R and 35L/R: Turn right to intercept NQI 7 DME arc and arc NE. Turn left to intercept NQI R-038 to cross JERIR at or above 8000. Then on NQI R-038 to CRP VORTAC.

(Continued on next page)

# KINGSVILLE-THREE DEPARTURE (NQI3•NQI)

Orig 05NOV20

KINGSVILLE, TEXAS

KINGSVILLE NAS (KNQI)

SC-3, 31 OCT 2024 to 28 NOV 2024

SC-3, 31 OCT 2024 to 28 NOV 2024