

ILS X or LOC/DME X RWY 13R

LOC I-NQI 110.9	APCH CRS 130°	Rwy Idg TDZE Arprt Elev 8000 50 50
---------------------------	-------------------------	--

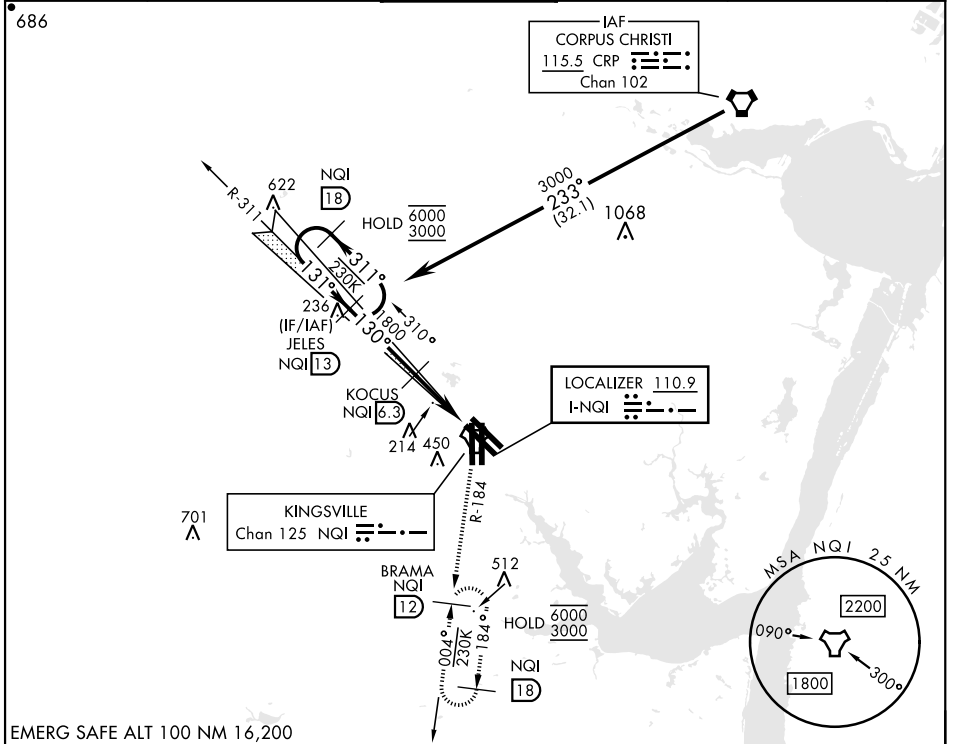
AL-918 [USN]

KINGSVILLE NAS (KNQI)

TACAN required.

MISSED APPROACH: Climbing right turn to 3000 to intercept NQI TACAN R-184 to BRAMA and hold.

ATIS ★ 282.25	APP CON 119.9 290.45	TOWER ★ 124.1 377.05	GND CON 239.05	CLNC DEL 328.4	ASR/PAR
-------------------------	--------------------------------	--------------------------------	--------------------------	--------------------------	---------



EMERG SAFE ALT 100 NM 16,200

VGSi and ILS glidepath not coincident (VGSi TCH 34).		3000 NQI R-184		ELEV 50	TDZE 50
CATEGORY	A	B	C	D	
S-ILS 13R		250-¾	200	(200-¾)	
S-LOC 13R	460-1	410 (500-1)	460-1½	410 (500-1½)	
CIRCLING	540-1	490 (500-1)	760-2	760-2¼	
			710 (800-2)	710 (800-2¼)	

HIRL all rwys
REIL all rwys
TDZL/CL Rwy 17L

ILS X or LOC/DME X RWY 13R

SC-3, 31 OCT 2024 to 28 NOV 2024

SC-3, 31 OCT 2024 to 28 NOV 2024