

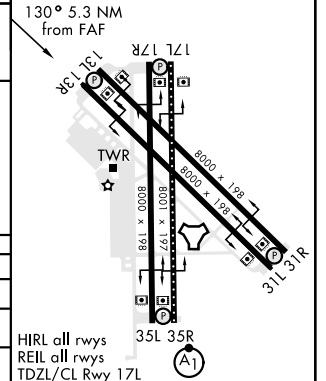
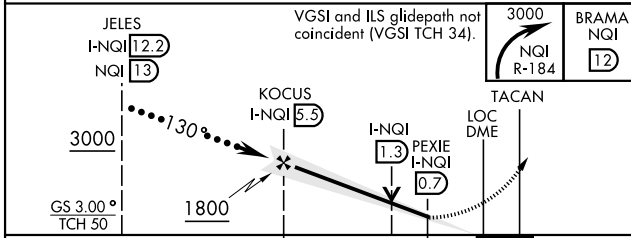
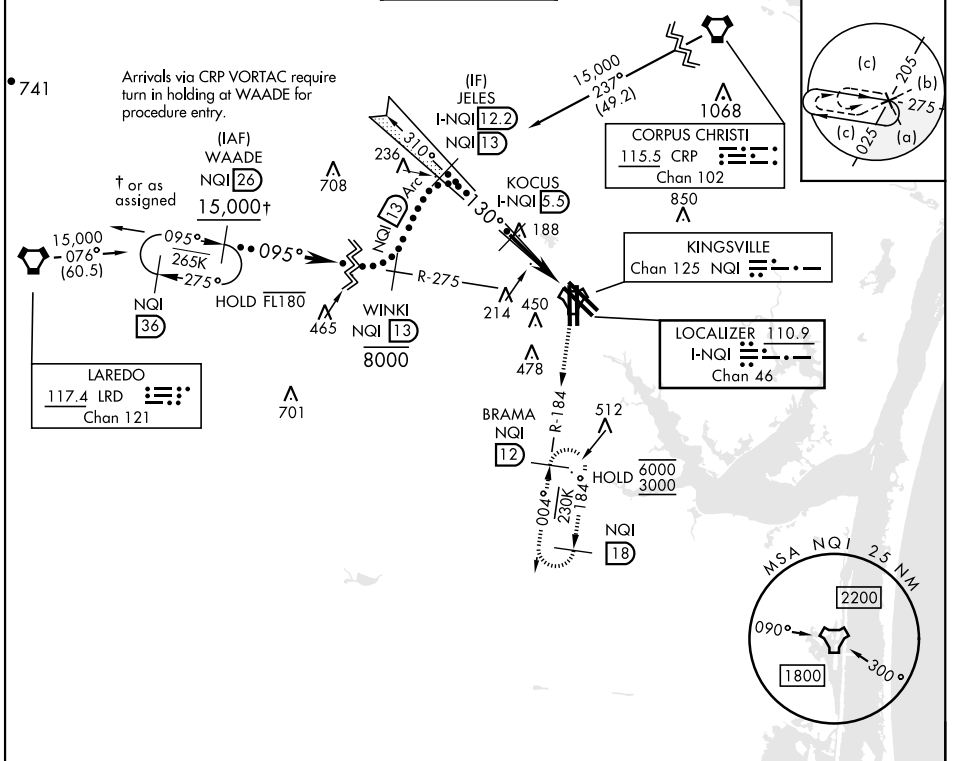
# HI-ILS Y or LOC/DME Y RWY 13R

LOC/DME I-NQI <b>110.9</b> Chan <b>46</b>	APCH CRS <b>130°</b>	Rwy Idg TDZE Arprt Elev <b>8000</b> <b>50</b> <b>50</b>	AL-918 [USN]	KINGSVILLE NAS (KNQI)
---	-------------------------	--	--------------	-----------------------

TACAN required.

MISSED APPROACH: Climbing right turn to 3000 and intercept NQI TACAN R-184 to BRAMA and hold.

ATIS ★ <b>282.25</b>	APP CON <b>119.9 290.45</b>	TOWER ★ <b>124.1 377.05</b>	GND CON <b>239.05</b>	CLNC DEL <b>328.4</b>	ASR/PAR
-------------------------	--------------------------------	--------------------------------	--------------------------	--------------------------	---------



HIRL all rwsys  
REIL all rwsys  
TDZL/CL Rwy 17L

# HI-ILS Y or LOC/DME Y RWY 13R

SC-3, 31 OCT 2024 to 28 NOV 2024

SC-3, 31 OCT 2024 to 28 NOV 2024