


WAAS CH 78409 W09A	APP CRS 095°	Rwy ldg 10002 TDZE 55 Apt Elev 55
-------------------------------------	---------------------	--

RNAV (GPS) RWY 9L

ORLANDO SANFORD INTL (SF'B)

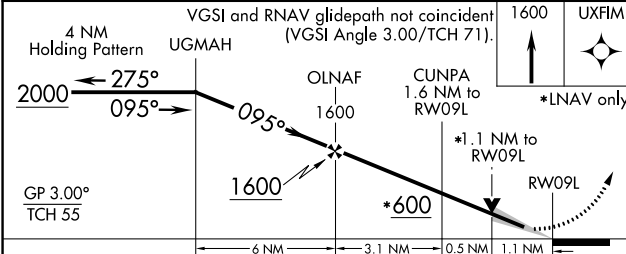
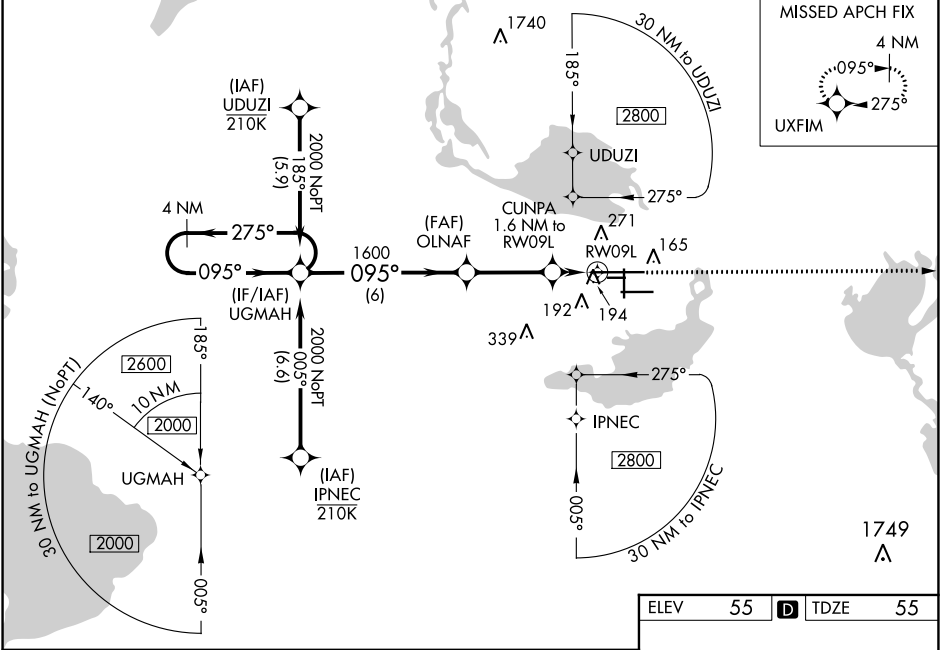
RNP APCH.

⚠ For uncompensated Baro-VNAV systems, LNAV/VNAV NA below 0°C or above 54°C. Baro-VNAV and VDP NA when using Exec altimeter setting. When local altimeter setting not received, use Exec altimeter setting and increase LPV DA to 282, LNAV/VNAV DA to 501 and all MDA 60 feet; increase LNAV/VNAV all Cats visibilities 1/8 SM and LNAV Cat C/D visibility 1/4 SM. Night landing: Rwy 27C NA.

MALSR 

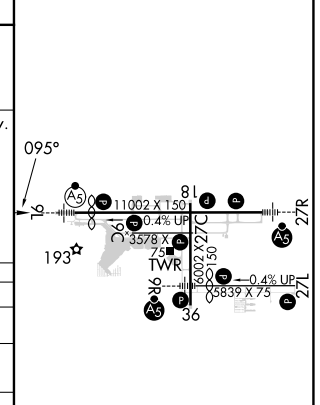
MISSED APPROACH: Climb to 1600 direct UXFIM and hold.

ATIS 125.975	ORLANDO APP CON 135.3 351.9 (NORTH) 119.775 351.9 (SOUTH)	SANFORD TOWER ★ 120.3 (CTAF) 0 254.35	GND CON 121.35 254.35	CLNC DEL 123.975	CLNC DEL 121.35 (when twr closed)
---------------------	--	---	------------------------------	-------------------------	---



ELEV 55	D TDZE 55
---------	------------------

CATEGORY	A	B	C	D
LPV DA		255-1/2	200 (200-1/2)	
LNAV/VNAV DA		355-1/2	300 (300-1/2)	
LNAV MDA	460-1/2 405 (500-1/2)		460-3/4 405 (500-3/4)	
C CIRCLING	580-1 525 (600-1)		600-1 1/2 545 (600-1 1/2)	640-2 585 (600-2)



SE-3, 05 SEP 2024 to 03 OCT 2024

SE-3, 05 SEP 2024 to 03 OCT 2024