

APP CRS	Rwy Idg	<b>5839</b>
<b>275°</b>	TDZE	<b>28</b>
	Apt Elev	<b>55</b>

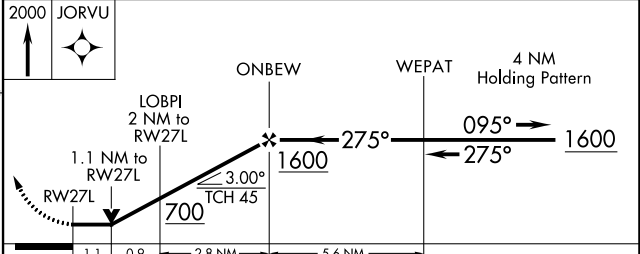
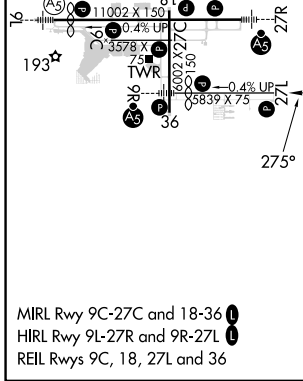
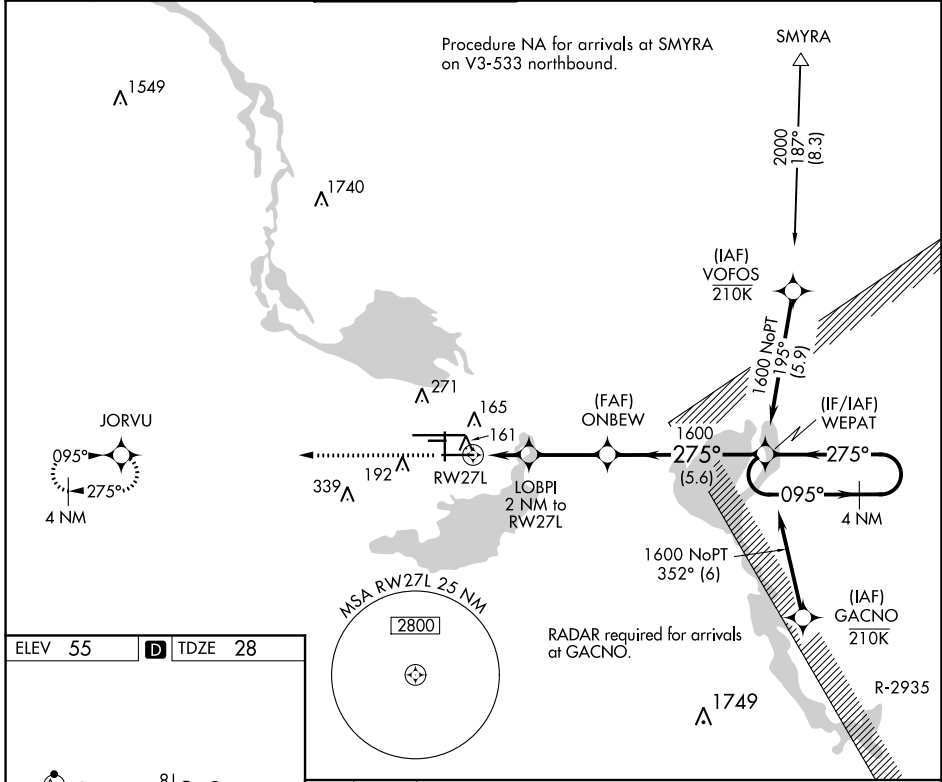
# RNAV (GPS) RWY 27L

ORLANDO SANFORD INTL (SF'B)

**⚠** Night Landing: Rwy 27C NA. DME/DME RNP-0.3 NA. Visibility reduction by helicopters NA. When local altimeter setting not received, use Exec altimeter setting: increase all MDAs 60 feet and visibility Cat C ¼ SM. VDP NA when using Exec altimeter setting.

MISSED APPROACH: Climb to 2000 direct JORVU and hold.

ATIS	ORLANDO APP CON	SANFORD TOWER*	GND CON	CLNC DEL	CLNC DEL
<b>125.975</b>	<b>135.3 351.9 (NORTH)</b> <b>119.775 351.9 (SOUTH)</b>	<b>120.3(CTAF) 254.35</b>	<b>121.35 254.35</b>	<b>123.975</b>	<b>121.35</b> (when twr closed)



CATEGORY	A	B	C	D
LNVA MDA	420-1	392 (400-1)	420-1½ 392 (400-1½)	420-2 392 (400-2)
<b>C</b> CIRCLING	580-1	525 (600-1)	600-1½ 545 (600-1½)	640-2 585 (600-2)

SE-3, 13 JUN 2024 to 11 JUL 2024

SE-3, 13 JUN 2024 to 11 JUL 2024