

WAAS CH <b>45923</b> <b>W18A</b>	APP CRS <b>185°</b>	Rwy Idg <b>5956</b> TDZE <b>49</b> Apt Elev <b>55</b>
--	------------------------	---

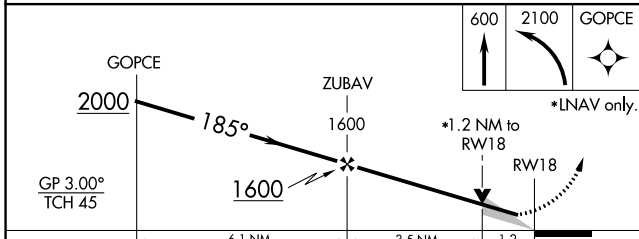
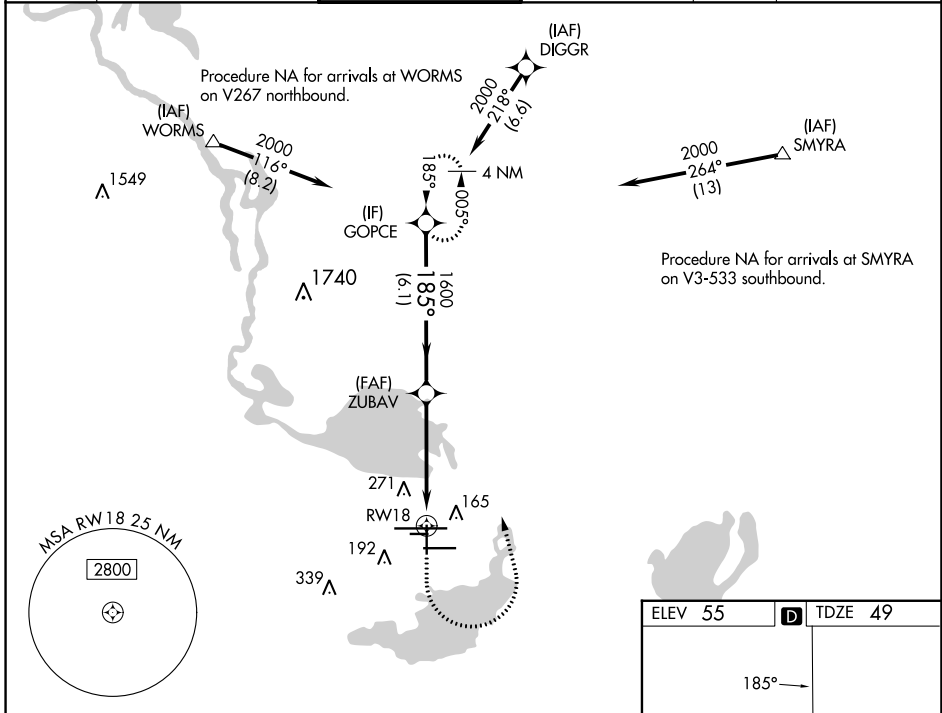
# RNAV (GPS) RWY 18

ORLANDO SANFORD INTL (SFB)

**⚠** Night Landing: Rwy 27C NA. Baro-VNAV NA when using Exec altimeter setting. For uncompassed Baro-VNAV systems, LNAV/VNAV NA below -1.5°C (5°F) or above 43°C (109°F). DME/DME RNP-0.3 NA. VDP NA with Exec altimeter setting. When local altimeter setting not received, use Exec altimeter setting: increase LPV DA to 292 feet; increase LNAV/VNAV DA to 342 feet and all visibilities ¼ SM; increase all MDAs 60 feet and visibility Cats C and D ½ SM.

**⚠** MISSED APPROACH: Climb to 600 then climbing left turn to 2100 direct GOPCE and hold.

ATIS <b>125.975</b>	ORLANDO APP CON <b>135.3 351.9 (NORTH)</b> <b>119.775 351.9 (SOUTH)</b>	SANFORD TOWER* <b>120.3(CTAF) 254.35</b>	GND CON <b>121.35 254.35</b>	CLNC DEL <b>123.975</b>	CLNC DEL <b>121.35</b> (when twr closed)
------------------------	---	---	---------------------------------	----------------------------	--



ELEV 55	D	TDZE 49
---------	---	---------

MIRL Rwy 9C-27C and 18-36  
 HIRL Rwy 9L-27R and 9R-27L  
 REIL Rwy 9C, 18, 27L and 36

CATEGORY	A	B	C	D
LPV DA		249-¾	200 (200-¾)	
LNAV/VNAV DA		299-¾	250 (300-¾)	
LNAV MDA	480-1	431 (500-1)	480-1¼	431 (500-1¼)
CIRCLING	580-1	525 (600-1)	600-1½	640-2
			545 (600-1½)	585 (600-2)

SE-3, 05 SEP 2024 to 03 OCT 2024

SE-3, 05 SEP 2024 to 03 OCT 2024