

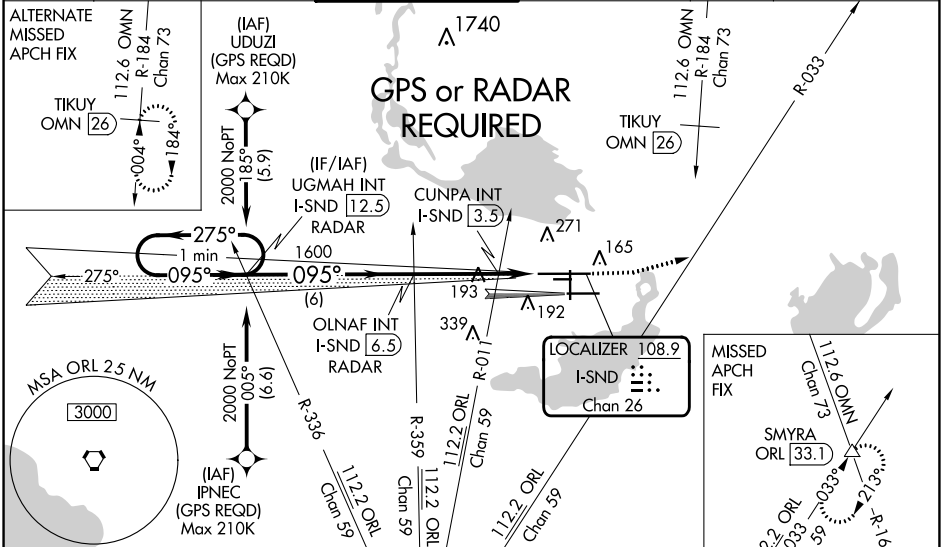
LOC/DME I-SND <b>108.9</b> Chan 26	APP CRS <b>095°</b>	Rwy ldg TDZE Apt Elev	<b>10002</b> <b>55</b> <b>55</b>
--	------------------------	-----------------------------	--

# ILS or LOC RWY 9L

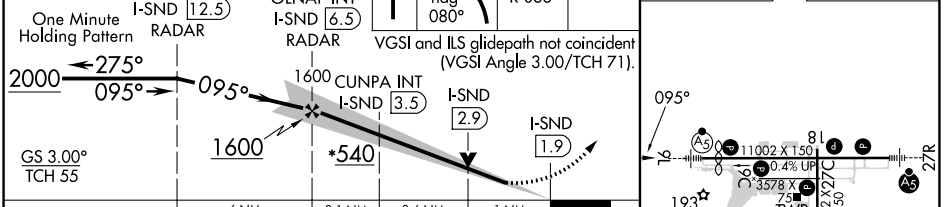
ORLANDO SANFORD INTL (SF'B)

<p><b>⚠</b> VDP NA with Exec altimeter setting. When local altimeter setting not received, use Exec altimeter setting: increase DA to 298 feet; increase all MDAs 60 feet and visibility Cats C and D ½ SM. Simultaneous approach authorized with Rwy 9R. Circling to Rwy 27C NA at night.</p>	<p>MALS R</p>	<p>MISSED APPROACH: Climb to 500 then climbing left turn to 2000 on heading 080° and ORL VORTAC R-033 to SMYRA INT/ORL 33.1 DME and hold.</p>
--	---------------	---

ATIS <b>125.975</b>	ORLANDO APP CON <b>135.3 351.9</b> (NORTH) <b>119.775 351.9</b> (SOUTH)	SANFORD TOWER* <b>120.3</b> (CTAF) <b>0 254.35</b>	GND CON <b>121.35 254.35</b>	CLNC DEL <b>123.975</b>	CLNC DEL <b>121.35</b> (when twr closed)
------------------------	---	---	---------------------------------	----------------------------	--



*600 when using Exec altimeter setting.	500	2000	SMYRA
UGMAH INT I-SND 12.5	OLNAF INT I-SND 6.5	ORL R-033	△



CATEGORY	A	B	C	D
S-ILS 9L	255-½ 200 (200-½)			
S-LOC 9L	540-½	485 (500-½)	540-1	485 (500-1)
<b>C</b> CIRCLING	580-1	525 (600-1)	600-1½ 545 (600-1½)	640-2 585 (600-2)
CUNPA FIX MINIMUMS (DUAL VOR RECEIVER OR DME REQUIRED)				
S-LOC 9L	460-½	405 (500-½)	460-¾	405 (500-¾)
<b>C</b> CIRCLING	580-1	525 (600-1)	600-1½ 545 (600-1½)	640-2 585 (600-2)

ELEV 55	<b>D</b> TDZE 55
---------	------------------

MIRL Rwy 9C-27C and 18-36

HIRL Rwy 9L-27R and 9R-27L

REIL Rwys 9C, 18, 27L and 36

FAF to MAP 4.7 NM

Knots	60	90	120	150	180
Min:Sec	4:42	3:08	2:21	1:53	1:34

SE-3, 13 JUN 2024 to 11 JUL 2024

SE-3, 13 JUN 2024 to 11 JUL 2024