

LOC/DME I-FNU <b>110.15</b> Chan <b>38</b> (Y)	APP CRS <b>275°</b>	Rwy Idg <b>11002</b> TDZE <b>45</b> Apt Elev <b>55</b>
--	------------------------	--

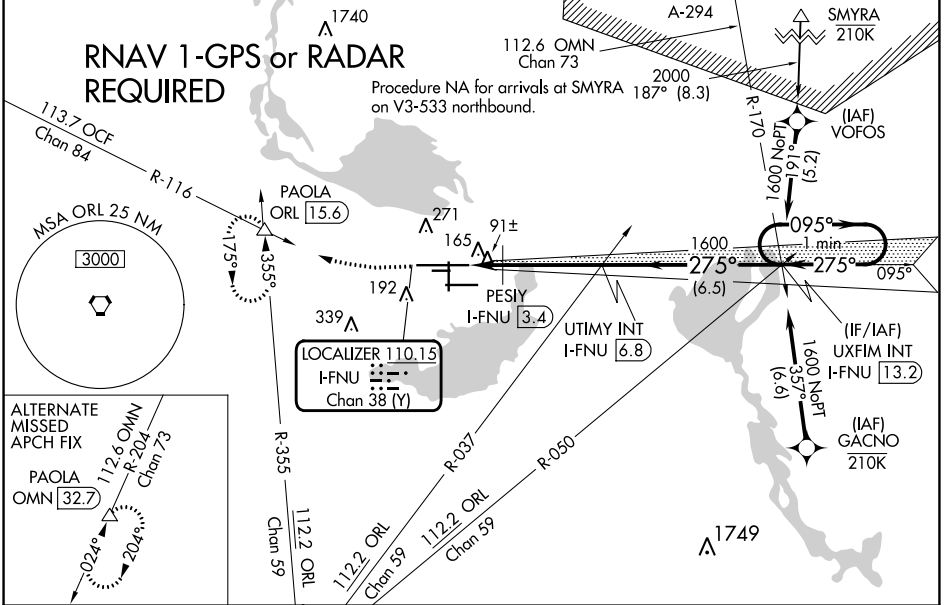
# ILS or LOC RWY 27R

ORLANDO SANFORD INTL (SF'B)

**MAJLSR** MISSED APPROACH: Climb to 500 then climbing right turn to 2800 on heading 280° and ORL VORTAC R-355 to PAOLA INT/ORL 15.6 DME and hold, continue climb-in-hold to 2800.

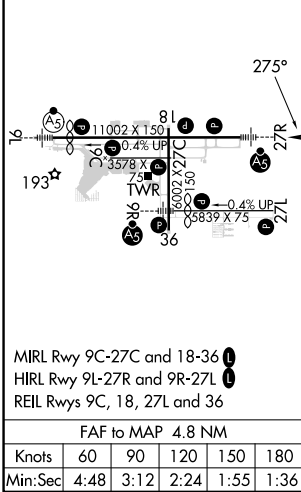
**▲** For inop ALS, increase PESIY FIX minimums  
**▲** Cat C/D visibility to 1 SM.

ATIS <b>125.975</b>	ORLANDO APP CON <b>135.3 351.9</b> (NORTH) <b>119.775 351.9</b> (SOUTH)	SANFORD TOWER* <b>120.3</b> (CTAF) <b>0 254.35</b>	GND CON <b>121.35 254.35</b>	CLNC DEL <b>123.975</b>	CLNC DEL <b>121.35</b> (when twr closed)
------------------------	---	---	---------------------------------	----------------------------	--



ELEV 55	<b>D</b>	TDZE 45
---------	----------	---------

500	2800	PAOLA	VGSI and ILS glidepath not coincident (VGSI Angle 3.00/TCH 72).
-----	------	-------	---



UTIMY INT I-FNU 6.8	UXFIM INT I-FNU 13.2	One Minute Holding Pattern		
I-FNU 2	PESIY I-FNU 3.4	1600		
1.4 NM	3.4 NM	6.5 NM		
CATEGORY	A	B	C	D
S-ILS 27R	245-1/2		200 (200-1/2)	
S-LOC 27R	480-1/2	435 (500-1/2)	480-3/4	435 (500-3/4)
<b>C</b> CIRCLING	580-1	525 (600-1)	600-1/2 545 (600-1/2)	640-2 585 (600-2)
PESIY FIX MINIMUMS				
S-LOC 27R	400-1/2	355 (400-1/2)	400-5/8	355 (400-5/8)
<b>C</b> CIRCLING	580-1	525 (600-1)	600-1/2 545 (600-1/2)	640-2 585 (600-2)

ORLANDO, FLORIDA  
Amdt 4 12OCT17

28°47'N-81°14'W

ORLANDO SANFORD INTL (SF'B)  
**ILS or LOC RWY 27R**

SE-3, 05 SEP 2024 to 03 OCT 2024

SE-3, 05 SEP 2024 to 03 OCT 2024