

TACAN RWY 23

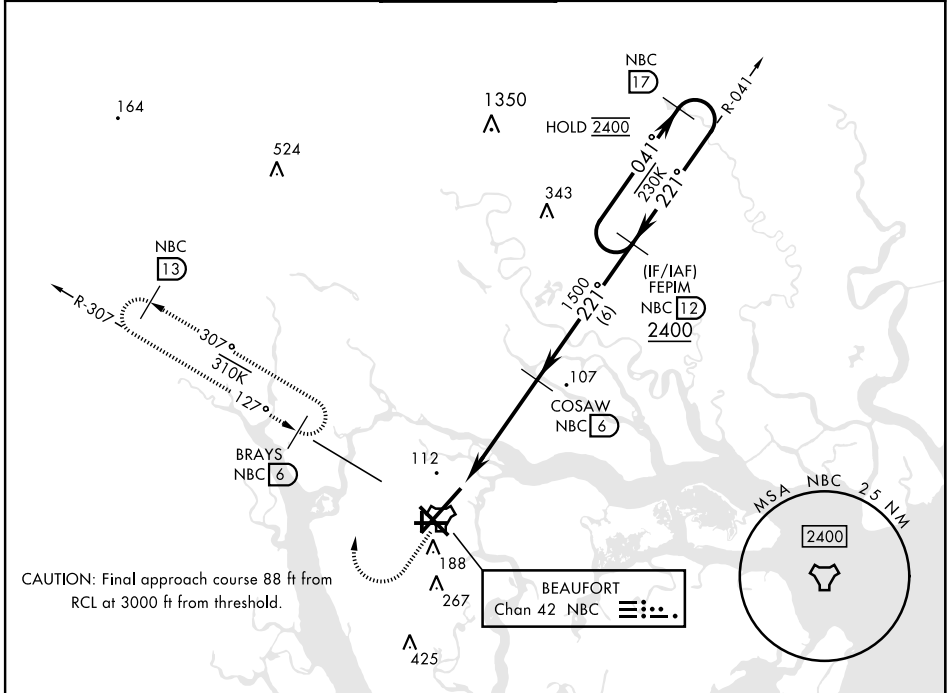
TACAN NBC Chan 42	APCH CRS 221°	Rwy ldg 12,202 TDZE 16 Arprt Elev 37
-----------------------------	-------------------------	---

[USN]

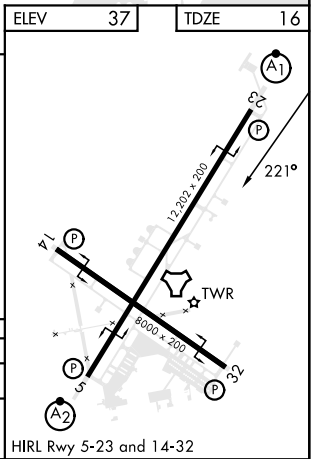
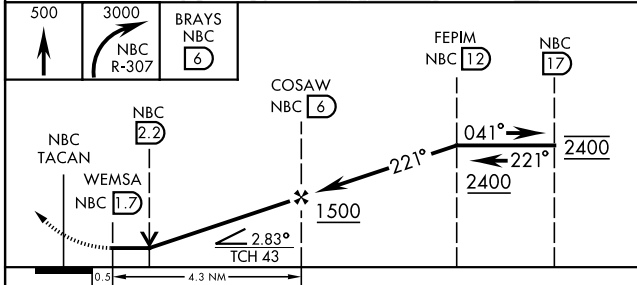
BEAUFORT MCAS (MERRITT FLD) (KNBC)

RADAR required		ALSIF-1 	MISSED APPROACH: Climb to 500, then climbing right turn to 3000, join NBC TACAN R-307 direct BRAYS and hold. Continue climb in hold to 3000.
*When ALS inop, increase vis to 1 mile.			

ATIS ★ 279.525	APP CON 125.125 292.125 (ABV 3000) 123.7 269.125 (3000 and BLW)	TOWER ★ 119.05 342.875	GND CON 128.15 348.625	CLNC DEL 128.15 254.375	ASR/PAR
--------------------------	---	----------------------------------	----------------------------------	-----------------------------------	---------



EMERG SAFE ALT 100 NM 3100	ELEV 37	TDZE 16
----------------------------	---------	---------



CATEGORY	A	B	C	D	E
S-23 ★	380-1/2 364 (400-1/2)	364 (400-1/2)	380-3/4 364 (400-3/4)	364 (400-3/4)	364 (400-3/4)
CIRCLING	560-1 523 (600-1)	523 (600-1)	580-1 1/2 543 (600-1 1/2)	600-2 563 (600-2)	740-2 1/2 703 (800-2 1/2)

TACAN RWY 23

SE-2, 31 OCT 2024 to 28 NOV 2024

SE-2, 31 OCT 2024 to 28 NOV 2024