

TACAN RWY 14

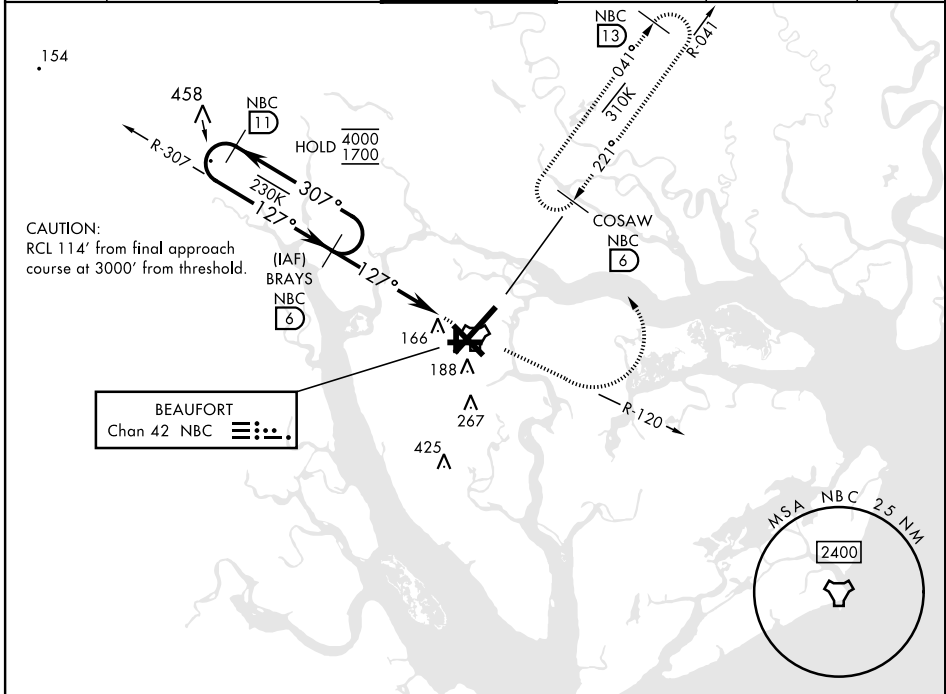
TACAN NBC Chan 42	APCH CRS 127°	Rwy ldg TDZE Arprt Elev 8000 32 37
-----------------------------	-------------------------	--

[USN]

BEAUFORT MCAS (MERRITT FLD) (KNBC)

RADAR required ▼	MISSED APPROACH: Climb to 1600 on NBC TACAN R-120, then climbing left turn to 3000 via hdg 330° to intercept NBC R-041 to 6 DME (COSAW) and hold. Continue climb in hold to 3000.
---------------------	---

ATIS★ 279.525	APP CON 125.125 292.125 (ABV 3000) 123.7 269.125 (3000 and BLW)	TOWER★ 119.05 342.875	GND CON 128.15 348.625	CLNC DEL 128.15 254.375	ASR/PAR
-------------------------	---	---------------------------------	----------------------------------	-----------------------------------	---------

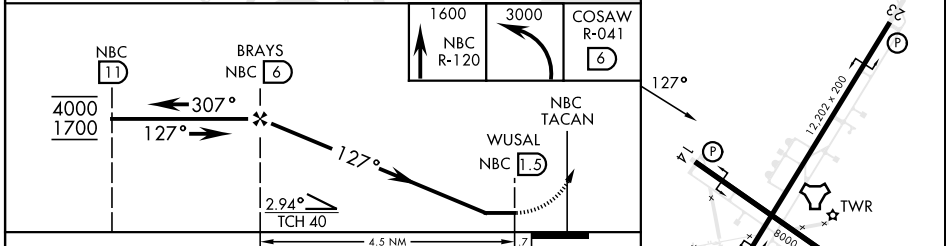


SE-2, 03 OCT 2024 to 31 OCT 2024

SE-2, 03 OCT 2024 to 31 OCT 2024

ELEV	37	TDZE	32
------	----	------	----

EMERG SAFE ALT 100 NM 3100



CATEGORY	A	B	C	D	E
S-14	420-1 388 (400-1)		420-1½ 388 (400-1½)		
CIRCLING	560-1 523 (600-1)		580-1½ 543 (600-1½)	600-2 563 (600-2)	740-2½ 703 (800-2½)

HIRL Rwy 5-23 and 14-32

TACAN RWY 14