

ILS or LOC Z RWY 23

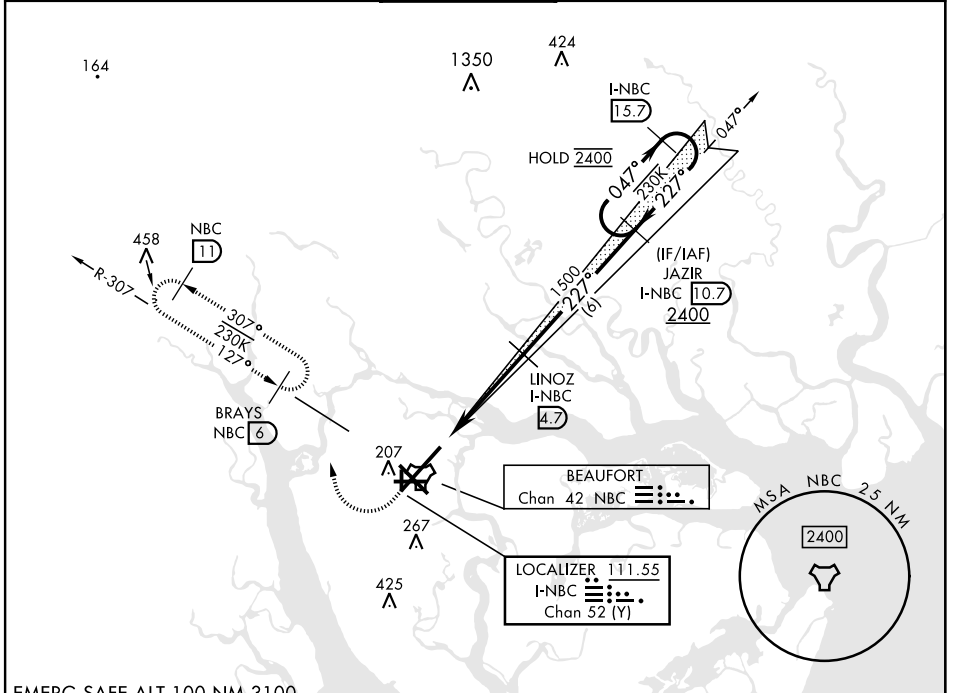
LOC/DME I-NBC 111.55 Chan 52 (Y)	APCH CRS 227°	Rwy ldg 12,202 TDZE 16 Arprt Elev 37
--	-------------------------	---

[USN]

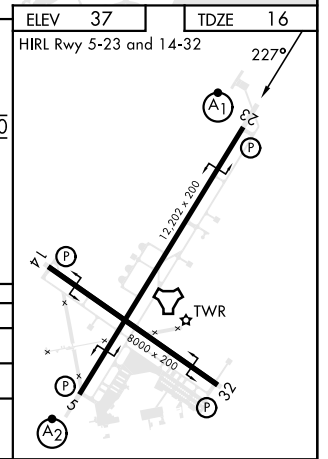
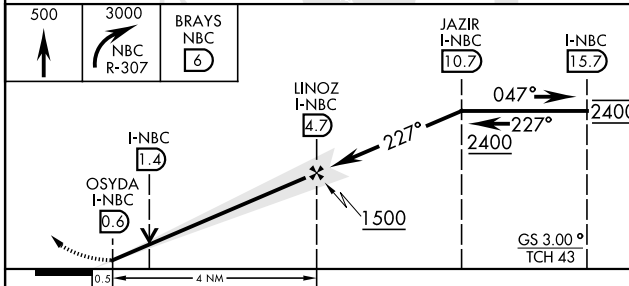
BEAUFORT MCAS (MERRITT FLD) (KNBC)

RNAV or RADAR required for missed approach.	ALSF-1 	MISSED APPROACH: Climb to 500, then climbing right turn to 3000, join NBC TACAN R-307 direct BRAYS and hold. Continue climb in hold to 3000.
<p>▼ *When ALS inop, increase vis to 3/4 mile.</p> <p>**When ALS inop, increase CAT AB vis to 1 mile; CAT CDE vis to 1 1/2 miles.</p>		

ATIS ★ 279.525	APP CON 125.125 292.125 (ABV 3000) 123.7 269.125 (3000 and BLW)	TOWER ★ 119.05 342.875	GND CON 128.15 348.625	CLNC DEL 128.15 254.375	ASR/PAR
--------------------------	---	----------------------------------	----------------------------------	-----------------------------------	---------



EMERG SAFE ALT 100 NM 3100



CATEGORY	A	B	C	D	E
S-ILS 23*	216-1/2		200	(200-1/2)	
S-LOC 23**	460-1/2	444 (500-1/2)	460-7/8	444	(500-7/8)
C CIRCLING	560-1	523 (600-1)	580-1 1/2 543 (600-1 1/2)	600-2 563 (600-2)	740-2 1/2 703 (800-2 1/2)

ILS or LOC Z RWY 23

SE-2, 31 OCT 2024 to 28 NOV 2024

SE-2, 31 OCT 2024 to 28 NOV 2024